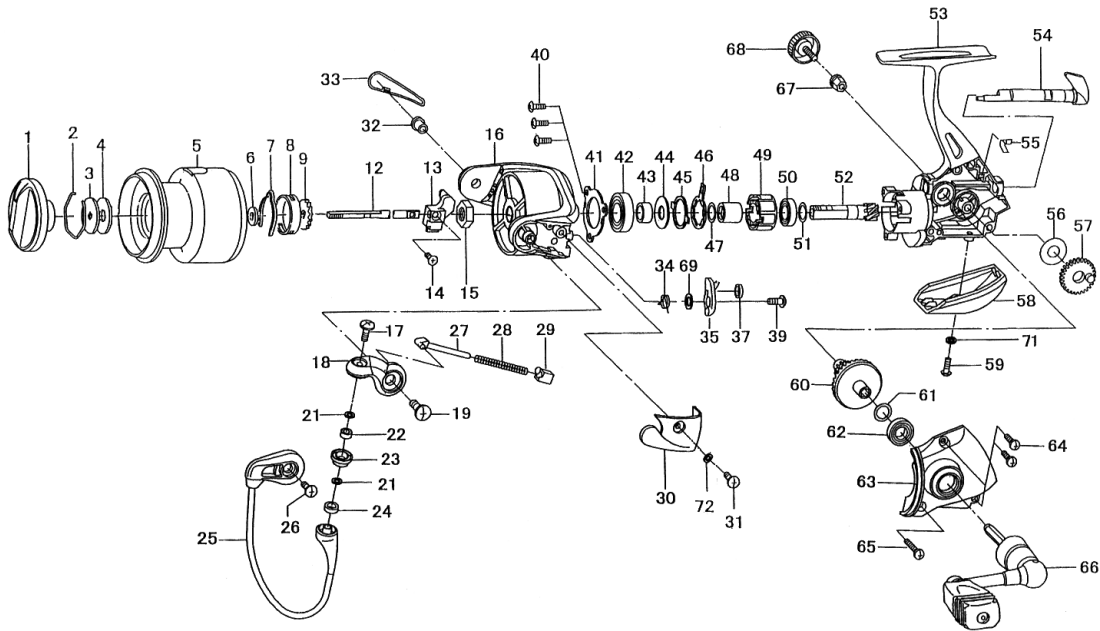


# SPINNING REEL THEORY 1500/2000



Key No.	Parts No.	Parts Name
1	6G453701	Drag Knob
2	6F373301	Drag Washer Retainer
3	6E467201	Key Washer
4	6E136001	Drag Washer
2-5	6G453502	Spool Assembly
6	6E467101	Washer (A)
7	6F704901	Spool Click Leaf Spring
8	6E122308	Click Leaf Spring Holder
9	6F811501	Click Gear
12	6G291401	Main Shaft
13	6G061601	Oscillating Slider
14	63510315	Screw (A)
15	6F336102	Rotor Nut
16	6G206214	Rotor
17	6G195601	Screw (B)
18	6G206406	Bail Arm
19	6G224901	Screw (C)
21	6F897101	Washer (B)
22	6G285701	Ball Bearing (A)
23	6F921601	Line Roller
24	6G047601	Collar (A)
25	6G206601	Bail Assembly
26	63516101	Screw (D)
27	6G017503	Bail Spring Shaft
28	6G062401	Bail Spring
29	6G017401	Bail Spring Holder
30	6G206506	Cover (A)
31	6G205102	Screw (E)
32	6G195101	Bail Holder Nut
33	6G450101	Cover (B)
34	6G194101	Bail Trip Lever Spring
35	6G265701	Bail Trip Lever
37	6G194301	Brake Shoe
39	6G193701	Screw (F)
40	6G332701	Screw (G)
41	6G193601	Bearing Retainer
42	6G426301	Ball Bearing (B)
43	6G193501	Collar (B)
44	6B275403	Washer (C)
45	6F622301	Clutch Cam Retainer
46	6F622201	Clutch Cam
47	63758502	Washer (D)
48	6F732501	Spacing Sleeve
49	6G220601	Roller Clutch
50	6G285801	Ball Bearing (C)
51	63758504	Washer (E)
52	6G291101	Pinion Gear
53	6G453302	Body
54	6G193108	Anti-Reverse Lever
55	6G193301	Anti-Reverse Cam Spring
56	6G114300	Washer (F)
57	6F691702	Oscillating Gear
58	6G206105	Rear Cover
59	6G400102	Screw (H)
60	6G061701	Drive Gear
61	63758500	Washer (G)
62	6G285801	Ball Bearing (D)
63	6G206009	Side Cover
64	6G332902	Screw (I)
65	6G333002	Screw (J)
66	6G453401	Handle Assembly
67	6F721001	Collar (C)
68	6F676510	Handle Screw
69	63753005	Washer (H)
71	6G256401	Washer (I)
72	6G256401	Washer (J)

THEORY 2000 SPECIAL PARTS		
Key No.	Parts No.	Parts Name
2-5	6G453802	Spool Assembly