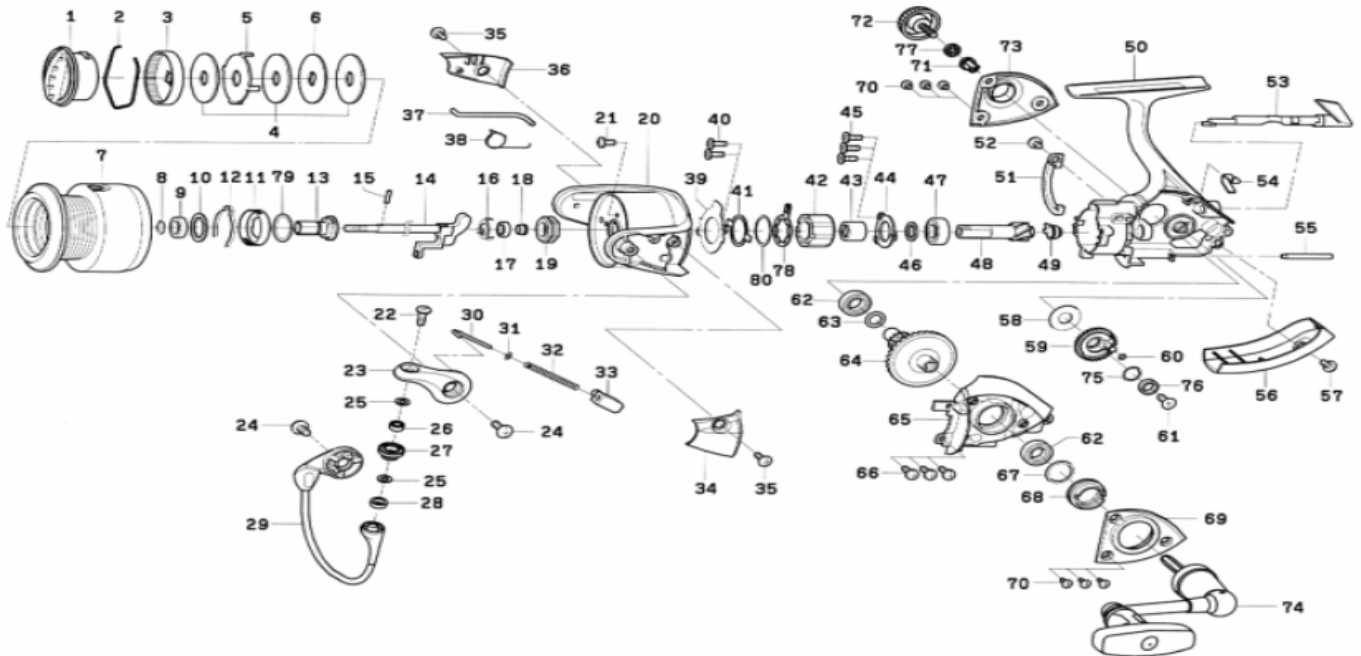




SPINNING REEL

# TD-ADVANTAGE 3000A

Please order by parts number, not key number  
Veuillez indiquer le numéro de la pièce (Non "Key" No.)



Key No.	Parts No.	Parts Name	Key No.	Parts No.	Parts Name
1	H03-8801	Drag Knob	40	G55-7101	Screw (E)
2	F71-0001	Drag Washer Retainer	41	G46-5401	Clutch Cam Retainer
3	F89-5304	Drag knob Click Plate	42	G22-0601	Roller Clutch
4	F69-1001	Drag Washer	43	G46-7501	Spacing Sleeve
5	F62-7301	Eared Washer	44	G46-7402	Bearing Retainer (B)
6	F62-7201	Key Washer	45	G55-7101	Screw (F)
2-7	H03-9601	Spool Assembly	46	375-8509	Washer (D)
2-7	H03-9601	Spool Assembly (Extra Spool)	47	G53-5101	Ball Bearing (C)
8	G47-2401	Collar Retainer	48	G61-1001	Pinion Gear
9	G72-0401	Collar (A)	49	G61-0901	Collar (D)
10	F62-5501	Washer (A)	50	H03-8401	Body
11	G47-2201	Click Leaf Spring Holder	51	G61-1801	Brake Shoe
12	F70-4901	Spool Click Leaf Spring	52	F50-5701	Screw (G)
13	G62-8801	Spool Metal	53	G60-9921	Anti-Reverse Lever
14	G62-8002	Main Shaft	54	G62-7801	Anti-Reverse Cam Spring
15	G37-5001	Pin	55	G61-0801	Stabilizer Bar
16	G47-1501	Bearing Retainer (A)	56	G61-1908	Rear Cover
17	G46-6202	Ball Bearing (A)	57	352-2501	Screw (H)
18	G61-3501	Collar (B)	58	G61-0101	Washer (E)
19	G47-1301	Rotor Nut	59	G63-2101	Oscillating Gear
20	G62-8315	Rotor	60	G46-6001	"O" Ring (A)
21	G62-7701	Screw (A)	61	G46-6301	Screw (I)
22	G19-5601	Screw (B)	62	G46-7302	Ball Bearing (D)
23	G61-2317	Bail Arm	63	G67-0501	"O" Ring (B)
24	G20-5001	Screw (C)	64	G69-9002	Drive Gear
25	F89-7101	Washer (B)	65	G61-1608	Side Cover
26	G28-1601	Ball Bearing (B)	66	G46-8301	Screw (J)
27	F92-1601	Line Roller	67	G61-3400	Washer (F)
28	G04-7601	Collar (C)	68	G61-2401	Screw (K)
29	G62-8501	Bail Assembly	69	G61-1701	Bearing Retainer (C)
30	G47-1803	Bail Spring Shaft	70	G61-1501	Screw (L)
31	E31-3901	Washer (C)	71	F72-1001	Collar (E)
32	G47-1701	Bail Spring	72	G61-4302	Handle Screw
33	G61-2101	Bail Spring Holder	73	G61-1401	Bearing Retainer (D)
34	G62-8401	Cover (A)	74	H03-8501	Handle Assembly
35	G27-0801	Screw (D)	75	G46-6100	Washer (G)
36	G62-8701	Cover (B)	76	G46-6202	Ball Bearing (E)
37	G62-8601	Bail Trip Lever	77	160-8101	Washer (H)
38	G61-3101	Bail Trip Lever Spring	78	F89-6801	Clutch Cam
39	G61-1201	Roller Clutch Retainer	79	G46-8000	Washer (I)
			80	F83-3000	Washer (J)