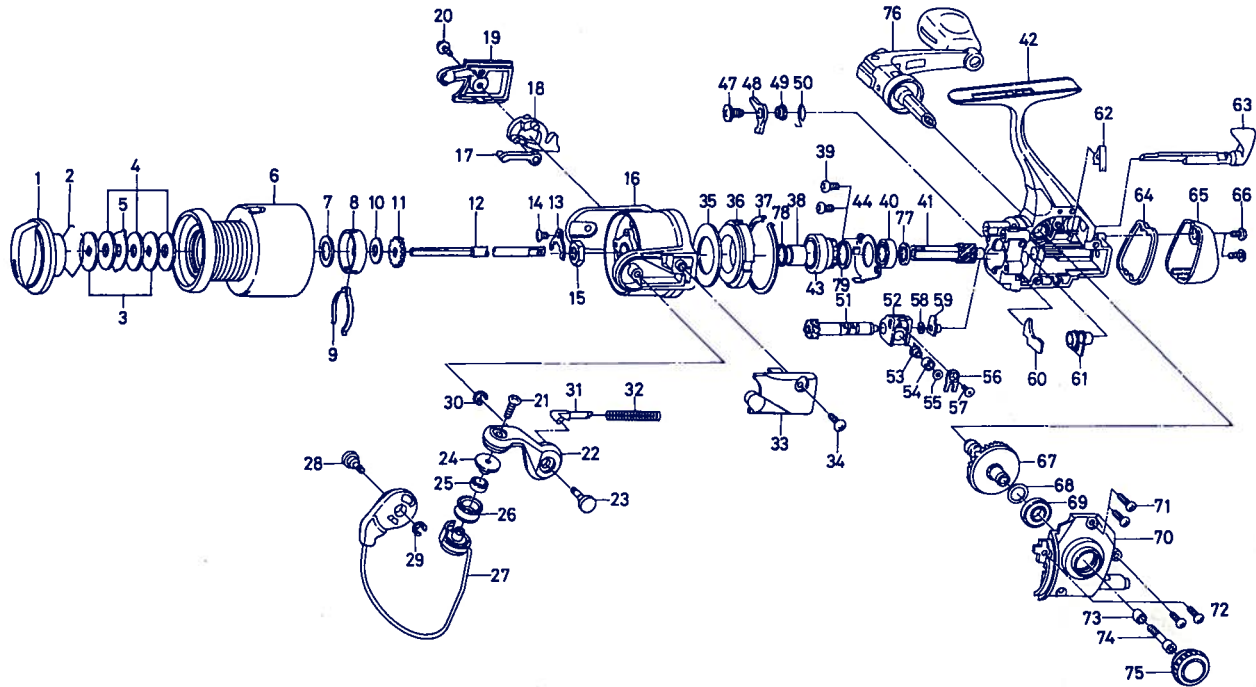




Please order by part number, not key number.

# SPINNING REEL TD1300i



No. 2-6 6-E27-2210

Spool assembly

| Key NO. | Parts No. | Parts Name                    | Key NO. | Parts No. | Parts Name                     |
|---------|-----------|-------------------------------|---------|-----------|--------------------------------|
| 1       | F17-0905  | Drag knob                     | 40      | 636-6401  | Ball bearing B                 |
| 2       | 171-7701  | Drag washer retainer          | 41      | F16-2502  | Pinion gear                    |
| 3       | E13-6101  | Key washer                    | 42      | F26-4001  | Body assembly                  |
| 4       | E13-6001  | Drag washer                   | 43      | F15-1201  | Anti-reverse ratchet           |
| 5       | E13-6201  | Eared washer                  | 44      | F15-1102  | Bearing retainer               |
| 6       | E27-2310  | Spool assembly                | 47      | L00-1801  | Anti-reverse pawl screw        |
| 7       | E39-4001  | Spool washer                  | 48      | F15-1501  | Anti-reverse pawl              |
| 8       | E12-2303  | Click leaf spring holder      | 49      | F15-8301  | Anti-reverse pawl collar       |
| 9       | B74-7702  | Spool click leaf spring       | 50      | F15-1601  | Anti-reverse pawl spring       |
| 10      | 375-4202  | Main shaft washer             | 51      | F17-8001  | Worm shaft                     |
| 11      | E36-5301  | Click gear                    | 52      | F02-4301  | Oscillating slider             |
| 12      | E50-2102  | Main shaft                    | 53      | E19-1202  | Oscillating pawl               |
| 13      | B99-5101  | Rotor nut holding plate       | 54      | E19-1301  | Oscillating pawl bush          |
| 14      | E24-8101  | Rotor nut holding plate screw | 55      | 375-0800  | Oscillating pawl washer        |
| 15      | 341-9203  | Rotor nut                     | 56      | E24-4901  | Oscillating slider cover       |
| 16      | F26-5801  | Rotor                         | 57      | E15-0203  | Oscillating slider cover screw |
| 17      | F01-4301  | Bail trip plate               | 58      | B53-6100  | Worm shaft washer              |
| 18      | F01-4401  | Bail trip lever               | 59      | F05-6901  | Worm shaft collar              |
| 19      | F17-6904  | Bail trip cover               | 60      | F08-7201  | Shield plate                   |
| 20      | E36-4201  | Bail trip cover screw         | 61      | F08-7101  | Pinion collar                  |
| 21      | B67-9305  | Line roller screw             | 62      | E26-8701  | Anti-reverse cam spring        |
| 22      | F17-6505  | Bail arm                      | 63      | F16-2803  | Anti-reverse lever             |
| 23      | F15-2501  | Bail arm screw                | 64      | F16-3903  | Water shield                   |
| 24      | F06-6301  | Line roller collar            | 65      | F16-4003  | Rear cover                     |
| 25      | F05-5601  | Ball bearing A                | 66      | E24-8102  | Rear cover screw               |
| 26      | F05-8901  | Line roller                   | 67      | F00-7102  | Drive gear                     |
| 27      | F17-8101  | Bail assembly                 | 68      | 375-8500  | Drive gear washer              |
| 28      | F15-2501  | Bail trip cam screw           | 69      | 637-5701  | Ball bearing C                 |
| 29      | 320-5901  | Bail trip cam screw retainer  | 70      | F17-6203  | Side cover                     |
| 30      | 320-5901  | Bail arm screw retainer       | 71      | E13-0501  | Side cover screw A             |
| 31      | F24-6801  | Bail spring shaft             | 72      | E13-0502  | Side cover screw B             |
| 32      | F26-8301  | Bail spring                   | 73      | F16-9301  | Handle collar                  |
| 33      | F17-6604  | Bail spring cover             | 74      | F30-3701  | Handle screw                   |
| 34      | E24-8102  | Bail spring cover screw       | 75      | F15-4402  | Handle screw cap               |
| 35      | F19-7201  | Oiled washer                  | 76      | F26-4101  | Handle assembly                |
| 36      | F15-3301  | Roller clutch                 | 77      | F26-3101  | Spacer                         |
| 37      | F21-2501  | Roller clutch retainer        | 78      | 375-8507  | Rotor washer                   |
| 38      | F15-5101  | Spacing sleeve                | 79      | F26-8501  | Ball bearing collar            |
| 39      | F21-2201  | Bearing retainer screw        |         |           |                                |