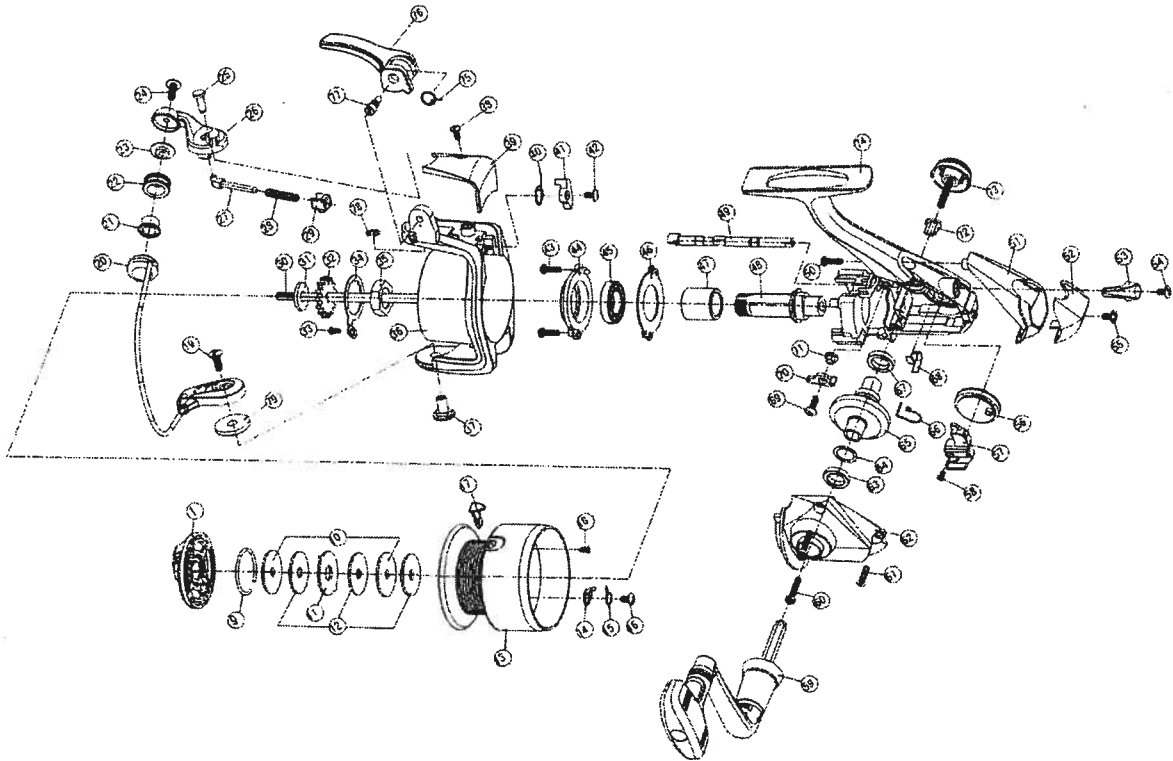


# SWEEPFIRES 1505 / 2505



| Key No. | Parts No. | Parts Name               |
|---------|-----------|--------------------------|
| 1       | W33-5805  | DRAG KNOB ASSY           |
| 9       | W33-5901  | DRAG WASHER RET          |
| 10      | W33-6001  | KEY WASHER               |
| 11      | W33-6101  | EARED WASHER             |
| 12      | W33-6201  | DRAG WASHER              |
| 14      | W30-1901  | CLICK PAWL               |
| 15      | W30-2101  | CLICK SPRING             |
| 16      | W33-7201  | CLICK PAWL SCREW         |
| 17      | W33-7301  | LINE HOLDER              |
| 18      | W33-7401  | LINE HOLDER SCREW        |
| 9-18    | W33-7507  | SPOOL                    |
| 19      | W33-9001  | BAIL HOLDER SCREW        |
| 20      | W33-7910  | BAIL                     |
| 21      | W34-5201  | LINE ROLLER BUSHING      |
| 22      | W33-8103  | LINE ROLLER              |
| 23      | W33-8201  | LINE ROLLER COLLAR       |
| 24      | W33-8301  | LINE ROLLER SCREW        |
| 25      | W34-5701  | BAIL ARM PIN             |
| 26      | W33-8506  | BAIL ARM                 |
| 27      | W33-8701  | BAIL SPRING SHAFT        |
| 28      | W33-8801  | BAIL SPRING              |
| 29      | W33-8902  | BAIL SPRING HOLDER       |
| 30      | W33-9201  | MAIN SHAFT               |
| 31      | W33-9301  | MAIN SHAFT WASHER        |
| 32      | W33-9401  | CLICK GEAR               |
| 33      | W33-9101  | ROTOR NUT HOLD PLT SCREW |
| 34      | W33-9501  | ROTOR NUT HOLD PLT       |
| 35      | W33-9601  | ROTOR NUT                |
| 36      | W34-0115  | ROTOR                    |
| 37      | W34-0201  | BAIL HOLDER NUT          |
| 38      | W34-0401  | BAIL SPRING COVER SCREW  |
| 39      | W34-0312  | BAIL SPRING COVER        |
| 40      | W34-0501  | BAIL TRIP LEVER SPRING   |
| 41      | W34-0601  | BAIL TRIP LEVER          |
| 42      | W34-0701  | BAIL TRIP LEVER SCREW    |
| 43      | W34-0801  | BEARING RET SCREW        |
| 44      | W34-0901  | BEARING RET A            |
| 45      | W34-1001  | BALL BEARING             |
| 46      | W34-1101  | BEARING RET B            |
| 47      | W34-5601  | SPACING SLEEVE           |
| 48      | W34-1805  | PINION GEAR              |
| 49      | W34-2001  | A/R CAM                  |
| 50      | W34-2101  | A/R CAM SCREW            |
| 51      | W34-2204  | REAR COVER A             |
| 52      | W34-2307  | REAR COVER B             |

| Key No. | Parts No. | Parts Name         |
|---------|-----------|--------------------|
| 53      | W34-2403  | A/R LEVER          |
| 54      | W34-2501  | A/R LEVER SCREW    |
| 55      | W34-2601  | REAR COVER SCREW   |
| 56      | W34-2701  | OSC GEAR           |
| 57      | W34-2801  | OSC SLIDER         |
| 58      | W34-2901  | OSC SLIDER SCREW   |
| 59      | W34-3007  | HANDLE             |
| 60      | W34-3101  | SIDE COVER SCREW A |
| 61      | W34-3201  | SIDE COVER SCREW B |
| 62      | W34-3304  | SIDE COVER         |
| 63      | W34-5501  | SIDE COVER BUSHING |
| 64      | W34-3701  | DRIVE GEAR WASHER  |
| 65      | W34-3801  | DRIVE GEAR         |
| 66      | W34-3901  | A/R PAWL SPRING    |
| 67      | W34-5301  | DRIVE GEAR BUSHING |
| 68      | W34-4001  | A/R CAM SPRING     |
| 69      | W34-4301  | A/R PAWL SCREW     |
| 70      | W34-4201  | A/R PAWL           |
| 71      | W34-4101  | A/R PAWL COLLAR    |
| 72      | W34-4701  | HANDLE COLLAR      |
| 73      | W34-4805  | HANDLE SCREW       |
| 74      | W34-4904  | BODY               |
| 75      | W34-5901  | TRIGGER SPRING     |
| 76      | W34-6001  | TRIGGER LEVER      |
| 77      | W34-6101  | TRIGGER SCREW      |
| 78      | W34-6201  | BAIL ARM SCREW RET |
| 79      | W34-6301  | BALANCER           |

**SPECIAL PART FOR SW2505**

| Key No. | Parts No. | Parts Name            |
|---------|-----------|-----------------------|
| 9-18    | W33-7607  | SPOOL                 |
| 20      | W33-7911  | BAIL                  |
| 30      | W33-9202  | MAIN SHAFT            |
| 36      | W34-0116  | ROTOR                 |
| 39      | W34-0313  | BAIL TRIP COVER       |
| 42      | W34-0702  | BAIL TRIP LEVER SCREW |
| 49      | W34-2002  | A/R CAM               |
| 51      | W34-2205  | REAR COVER A          |
| 52      | W34-2308  | REAR COVER B          |
| 56      | W34-2702  | OSC GEAR              |
| 57      | W34-2802  | OSC SLIDER            |
| 59      | W34-3012  | HANDLE                |
| 62      | W34-3404  | SIDE COVER            |
| 74      | W34-5004  | BODY                  |
| 79      | W34-6401  | BALANCER              |