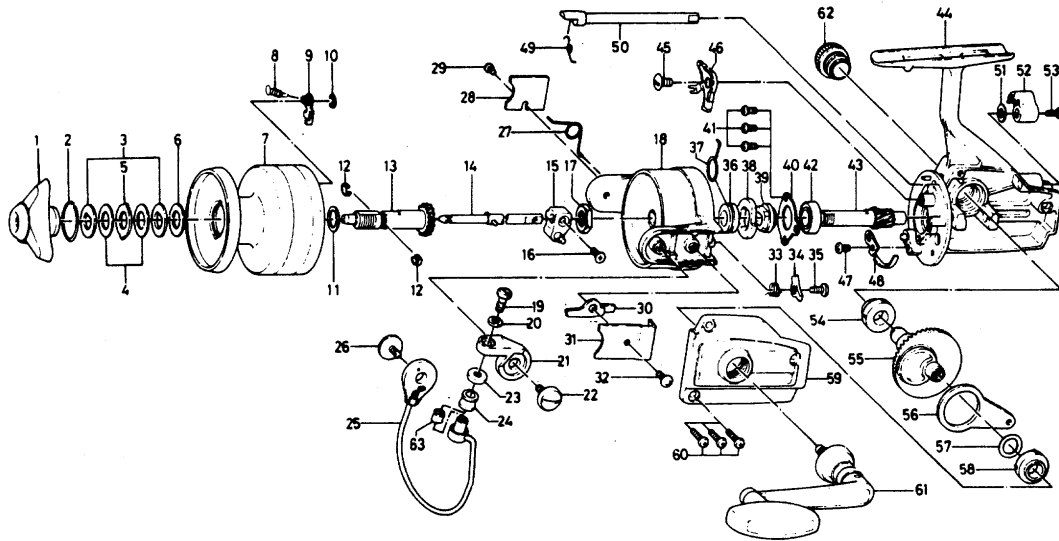


# SPINNING REEL RG 2600



Key No.	Parts No.	Parts Name	Key No.	Parts No.	Parts Name
1	740-4401	Drag knob	37	145-2901	Anti-reverse claw spring
2	170-4601	Drag washer retainer	38	280-9501	Ratchet
3	376-4001	Drag D washer	39	636-6711	Click gear
4	375-7802	Disc washer	40	635-9901	Ball bearing ret. washer
5	375-8002	Drag A washer	41	351-6601	Ball bearing ret. washer screw
6	375-7803	Drag washer	42	635-4801	Ball bearing
7	734-6305	Spool	43	403-2801	Pinion gear
8	145-2101	Spool click claw spring	44	B69-3601	Body
9	807-8201	Spool click claw	45	352-1102	Anti-reverse claw screw
10	320-1402	Spool click claw retainer	46	B33-5601	Anti-reverse claw
11	376-3901	Spool washer	47	351-6601	Cam kick plate screw
12	151-9501	Spool metal leaf spring	48	B22-9901	Cam kick plate
13	720-3201	Spool metal	49	144-0321	Anti-reverse cam spring
14	711-5501	Main shaft	50	B15-6403	Anti-reverse cam
15	637-3001	Oscillating support	51	373-2700	Anti-reverse lever washer
16	351-8001	Oscillating slider screw	52	541-7301	Anti-reverse lever
17	B69-1701	Rotor nut	53	352-2501	Anti-reverse lever screw
18	202-1615	Rotor	54	501-6102	Bearing
19	363-1101	Bail screw	55	414-2302	Drive gear
20	375-1101	Bail washer	56	481-2401	Oscillating slider
21	231-3501	Arm lever	57	371-2800	Drive gear washer
22	363-5202	Arm lever screw	58	501-6102	Bearing
23	501-2001	Roller collar	59	B69-3801	Body cover
24	250-4501	Line roller	60	351-5901	Body cover screw
25	725-8514	Bail	61	B68-7501	Handle
26	363-5202	Bail holder screw	62	363-4702	Handle screw cap
27	B42-1701	Bail spring	63	502-1401	Roller metal
28	041-8803	Bail spring cover			
29	351-6101	Bail spring cover screw			
30	571-1001	Bail kick lever			
31	041-8103	Bail kick lever cover			
32	351-7701	Bail kick lever cover screw			
33	145-0701	Bail kick cam spring			
34	571-0901	Bail kick cam			
35	351-4701	Bail kick cam screw			
36	502-1301	Spring holder			