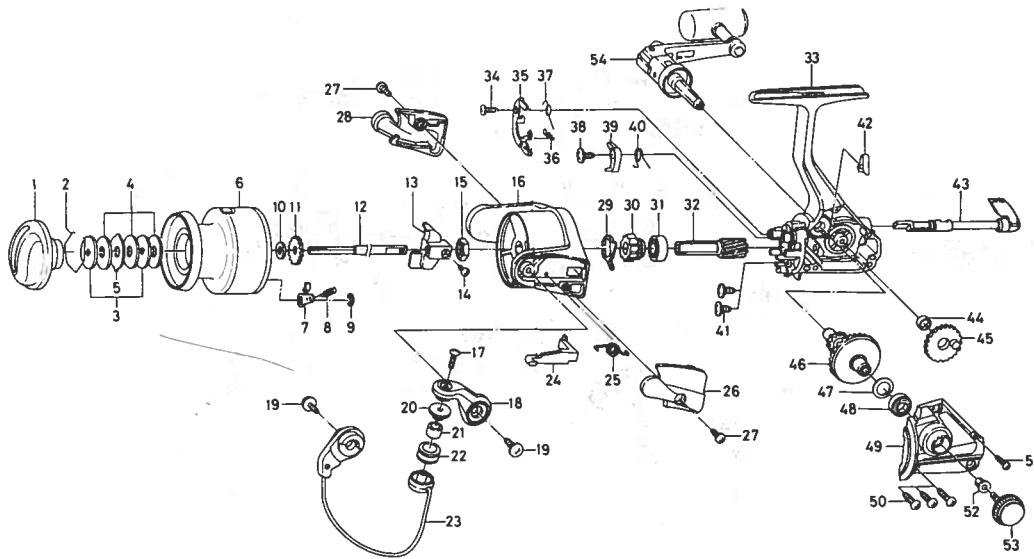


SPINNING REEL REGAL-X3500-2B/4000-2B



Key NO.	Parts No.	Parts Name	Key NO.	Parts No.	Parts Name
2-9	E52-0504	Spool assembly	30	F31-9801	Anti-reverse ratchet
1	F32-9502	Drag knob	31	L03-6502	Ball bearing A
2	171-7701	Drag washer retainer	32	E52-0101	Pinion gear
3	F09-4901	Key washer	33	F33-2901	Body assembly
4	E13-6003	Drag washer	38	E00-7101	Anti-reverse pawl screw
5	373-3603	Eared washer	39	E46-1302	Anti-reverse pawl
6	E52-0602	Spool assembly	40	E46-1201	Anti-reverse pawl spring B
7	B07-5304	Click pawl	41	E03-7801	Bearing retainer screw
8	E40-3101	Click spring	42	E32-7801	Anti-reverse cam spring
9	320-5901	Click retainer	43	F08-5109	Anti-reverse lever
10	F09-4701	Spool washer	44	F13-1601	Oscillating gear collar
11	E46-2701	Click gear	45	E46-1501	Oscillating gear
12	E48-5301	Main shaft	46	E52-0201	Drive gear
13	F09-1301	Oscillating slider	47	373-7802	Drive gear washer
14	352-1502	Oscillating slider screw	48	631-6901	Ball bearing B
15	340-6602	Rotor nut	49	F37-9701	Side cover
16	F32-9202	Rotor	50	B83-5002	Side cover screw A
17	B67-9304	Line roller screw	51	E15-8602	Side cover screw B
18	F31-0202	Bail arm	52	E12-7501	Handle collar
19	B84-2102	Bail arm screw	53	B92-5001	Handle lock screw
20	F06-6301	Line roller collar	54	F33-5401	Handle assembly
21	E50-5901	Line roller bushing			
22	E50-6001	Line roller			
23	F32-8902	Bail assembly	X4000-2B Special parts		
24	E46-2101	Bail trip lever	2-9	E52-0704	Spool assembly
25	F12-8901	Bail spring	6	E52-0802	Spool assembly
26	F31-4302	Bail spring cover	16	F33-4802	Rotor
27	E24-8101	Bail spring cover screw	23	F33-4602	Bail assembly
28	F31-4402	Bail trip cover	24	E46-3101	Bail trip lever
29	E46-2001	Anti-reverse pawl spring A	33	F33-2903	Body assembly
			49	F37-9702	Side cover