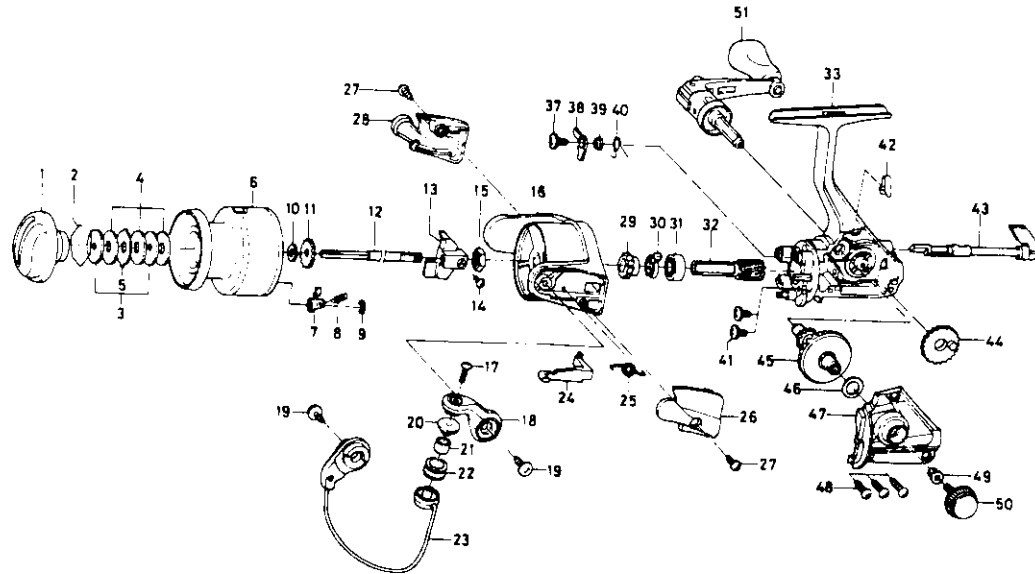




# SPINNING REEL REGAL-S2500B



Key No.	Parts No.	Parts Name
2-9	6-F32-0501	Spool assembly
1	6-F32-2101	Drag knob
2	6-171-7701	Drag washer retainer
3	6-E46-7201	Key washer
4	6-E13-6003	Drag washer
5	6-373-3603	Eared washer
6	6-F32-0601	Spool assembly
7	6-B07-5304	Click pawl
8	6-E40-3101	Click spring
9	6-320-5901	Click retainer
10	6-E46-7101	Spool washer
11	6-270-6501	Click gear
12	6-E48-4301	Main shaft
13	6-E45-1401	Oscillating slider
14	6-351-0315	Oscillating slider screw
15	6-341-9201	Rotor nut
16	6-F32-0401	Rotor
17	6-B67-9304	Line roller screw
18	6-F31-0201	Bail arm
19	6-B84-2102	Bail arm screw
20	6-F06-6301	Line roller collar
21	6-E50-5901	Line roller bushing
22	6-E50-6001	Line roller
23	6-F31-6401	Bail assembly
24	6-E45-1601	Bail trip lever
25	6-F12-8901	Bail spring
26	6-F31-0301	Bail spring cover
27	6-E24-8101	Bail spring cover screw
28	6-F31-0401	Bail trip cover
29	6-F31-1501	Anti-reverse ratchet
30	6-E38-5501	Anti-reverse pawl spring A
31	6-L03-6601	Ball bearing
32	6-E51-9801	Pinion gear
33	6-F32-0201	Body assembly
37	6-L00-1801	Anti-reverse pawl screw
38	6-L01-4401	Anti-reverse pawl
39	6-L01-4302	Anti-reverse pawl collar
40	6-L00-1501	Anti-reverse pawl spring B
41	6-E03-7801	Bearing retainer screw
42	6-E32-7801	Anti-reverse cam spring
43	6-F08-5120	Anti-reverse lever
44	6-E45-1301	Oscillating gear
45	6-F17-0001	Drive gear
46	6-373-7800	Drive gear washer
47	6-F32-0301	Side cover
48	6-B83-5002	Side cover screw
49	6-501-8501	Handle collar
50	6-B92-5001	Handle lock screw
51	6-F31-9902	Handle assembly