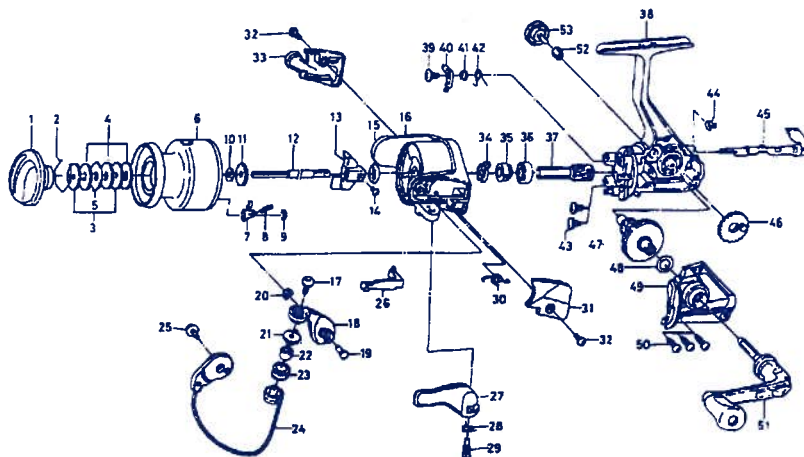


SPINNING REEL REGAL RG-S1505B/REG-S2005B



Key No.	Parts No.	Parts Name	Key No.	Parts No.	Parts Name
2-9	F33-0101	Spool assembly	32	E24-8101	Bail spring cover screw
1	F32-8501	Drag knob	33	F32-6501	Bail trip cover
2	F37-3301	Drag washer retainer	34	F12-2101	Anti-reverse pawl spring A
3	E46-7201	Key washer	35	E49-8501	Anti-reverse ratchet
4	E13-6001	Drag washer	36	634-1301	Ball bearing
5	373-3603	Eared washer	37	F12-1601	Pinion gear
6	F33-0201	Spool assembly	38	F33-0002	Body assembly
7	B07-5304	Click paw	39	F12-5701	Anti-reverse pawl screw
8	E40-3101	Click spring	40	F12-1901	Anti-reverse pawl
9	320-5901	Click retainer	41	F12-3501	Anti-reverse pawl collar
10	E46-7101	Spool washer	42	F12-3401	Anti-reverse pawl spring B
11	270-6501	Click gear	43	E03-7801	Bearing retainer screw
12	E49-8401	Main shaft	44	F12-2001	Anti-reverse cam spring
13	F12-2301	Oscillating slider	45	F08-5122	Anti-reverse lever
14	351-0311	Oscillating slider screw	46	F12-2201	Oscillating gear
15	341-9201	Rotor nut	47	F12-1501	Drive gear
16	F33-1401	Rotor	48	375-8501	Drive gear washer
17	B67-9306	Line roller screw	49	F32-7602	Side cover
18	F17-3102	Bail arm	50	E15-8602	Side cover screw
19	E49-3501	Bail arm screw	51	F32-8201	Handle assembly
20	320-5901	Bail arm screw retainer	52	501-8501	Handle collar
21	F06-6301	Line roller collar	53	B92-5004	Handle lock screw
22	F31-6801	Line roller bushing			
23	E50-6001	Line roller			
24	F33-1501	Bail assembly			
25	B84-2102	Bail trip cam screw			
26	E49-6401	Bail top lever			
27	E49-3406	Trigger lever			
28	E36-9901	Trigger spring			
29	E37-0002	Trigger screw			
30	E49-6801	Bail spring			
31	F32-4102	Bail spring cover			

RG-S2005B Special Parts		
2-9	F40-5501	Spool assembly
16	F39-9801	Rotor assembly
24	F40-0001	Bail assembly
26	E49-6501	Bail top lever
38	F33-0003	Body assembly
49	F32-7604	Side cover