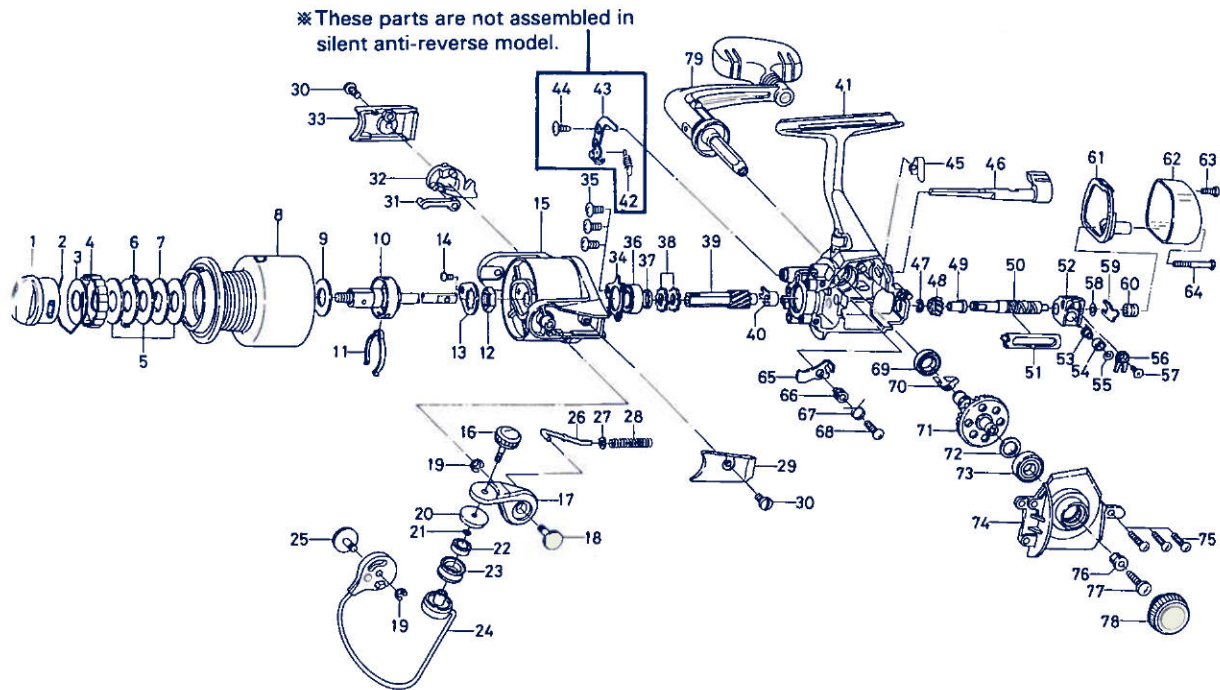


SPINNING REEL — EX800



Key No. 2-8

F02-3101 Spool assembly

Key

Key No.	Part No.	Part Name
1	F01-8101	Drag knob
2	F06-2601	Drag washer retainer
3	F01-6001	Click plate washer
4	E12-2803	Drag knob click plate
5	B36-0204	Drag washer
6	E15-0101	Eared washer
7	B65-2302	Key washer
8	F02-3201	Spool assembly
9	F06-2701	Spool washer
10	F02-2501	Main shaft assembly
11	B74-7702	Spool click leaf spring
12	340-6605	Rotor nut
13	B66-2601	Rotor nut holding plate
14	351-1801	Rotor nut holding plate screw
15	F02-1901	Rotor
16	F01-5001	Line roller screw
17	F01-3401	Bail arm
18	F01-3501	Bail arm screw
19	320-5901	Bail arm screw retainer
20	F01-4901	Line roller collar
21	B85-3101	"O" ring
22	F05-5601	Ball bearing A
23	F06-3201	Line roller
24	F02-2101	Bail
25	F01-4501	Bail trip cam screw
26	E12-4701	Bail spring shaft
27	E11-5901	Bail spring washer
28	E43-5401	Bail spring
29	F02-2001	Bail spring cover
30	F01-3701	Bail spring cover screw
31	F02-2301	Bail trip plate
32	F01-4401	Bail trip lever
33	F02-2401	Bail trip cover
34	F02-1501	Bearing retainer
35	351-7701	Bearing retainer screw
36	B62-8601	Ball bearing B
37	B63-0401	Spacer
38	E20-0801	Anti-reverse ratchet

Key

Key No.	Part No.	Part Name
39	F02-1401	Pinion gear
40	E34-4101	Pinion collar
41	F15-7602	Body
45	E26-8701	Anti-reverse cam spring
46	F01-2702	Anti-reverse lever
47	320-5901	Worm shaft gear retainer
48	F02-1301	Worm shaft gear
49	E19-0901	Worm shaft bush
50	F02-1101	Worm shaft
51	F02-1001	Worm shield cover
52	F02-0901	Oscillating slider
53	F02-1202	Oscillating pawl
54	E19-1301	Oscillating pawl bush
55	375-0800	Oscillating pawl washer
56	E24-4901	Oscillating slider cover
57	352-1502	Oscillating slider cover screw
58	375-4101	Worm shaft washer
59	E24-5101	Worm shaft retainer
60	E19-1101	Worm shaft collar
61	F01-6101	Water shield
62	F01-6201	Rear cover
63	F01-6301	Rear cover screw A
64	F01-7201	Rear cover screw B
65	F02-4201	Anti-reverse pawl
66	B96-5501	Anti-reverse pawl collar
67	B96-5601	Anti-reverse pawl spring A
68	351-6401	Anti-reverse pawl screw
69	B86-1701	Ball bearing C
70	F02-1702	Anti-reverse pawl spring B
71	F02-1601	Drive gear
72	373-7808	Drive gear washer
73	B62-8601	Ball bearing B
74	F02-1801	Left side cover
75	351-1101	Side cover screw
76	B85-0801	Handle collar
77	F04-5101	Handle screw
78	F02-2901	Handle screw cap
79	F15-6001	Handle assembly