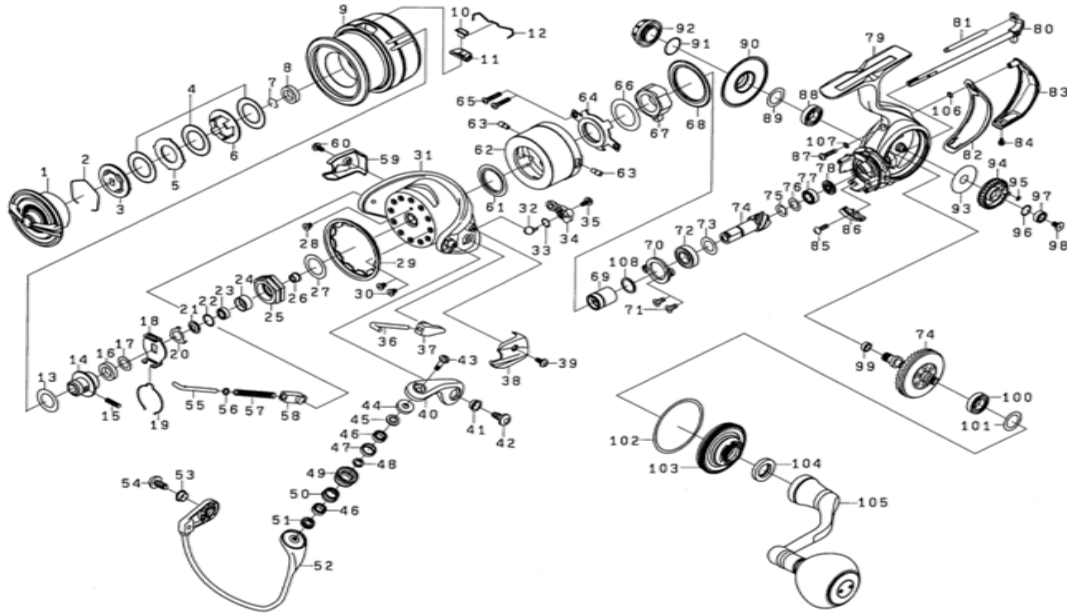


DAWA SPINNING REEL

Please order by parts number, not key number
Veuillez indiquer le numéro de la pièce (Non "Key" No.)

CERTATELT5000D



Key No	Part No	Description
1	J78-4401	DRAG KNOB ASSY
2	J55-6701	DRAG RING
3	J55-6601	DRAG RATCHET
4	J67-9101	ATD DRAG WASHER(LT3-3pcs)
5	J56-1201	DRAG DISC WASHER
6	J55-6501	DRAG RIP WASHER
7	B35-8702	SPOOL COLLAR RING
8	J54-6701	SPOOL COLLAR
2-12	J86-3601	SPOOL ASSY.(ATD)
10	J55-8001	LINE STOPPER
11	J56-8601	LINE STOPPER PLATE
12	J31-4801	LINE STOPPER SPRING
13	J54-6300	SPOOL WASHER (A)
14	J54-9501	SPOOL METAL
15	J55-8201	SPOOL METAL SCREW
16	H62-4801	SPOOL METAL COLLAR
17	J60-2201	SPOOL WASHER (B)
18	M02-1401	CLICK HOLDER
19	H41-6101	CLICK REEF SPRING
20	G47-1501	ROTOR NUT PLATE
21	J72-9101	ROTOR NUT PACKING
22	375-5202	ROTOR NUT WASHER
23	H95-9602	ROTOR NUT BALL BEARING
24	J69-0201	ROTOR NUT BEARING COLLAR
25	J25-3001	ROTOR NUT
26	J80-8501	ROTOR NUT COLLAR
27	371-2836	ROTOR NUT WASHER
28	H02-2701	ROTOR NUT SCREW
29	J28-4001	ROTOR COVER
30	H02-2701	ROTOR COVER SCREW
31	J28-3501	ROTOR
32	J43-5201	KICK LEVER SPRING
33	J33-9501	KICK LEVER WASHER
34	J28-3601	KICK LEVER ASSY
35	H41-7701	KICK LEVER SCREW
36	J26-2601	ARM LEVER SHAFT
37	J26-2701	ARM LEVER SHAFT COLLAR
38	J28-3701	ARM LEVER HOLDER COVER
39	J25-5201	ARM LEVER HOLDER COVER SCREW
40	J25-4801	ARM LEVER
41	J25-4901	ARM LEVER SCREW COLLAR
42	J25-5001	ARM LEVER SCREW
43	J25-7001	ROLLER CREW
44	J53-8001	ROLLER COLLAR
45	J53-8401	ROLLER MAG COLLAR(A)
46	J25-6702	ROLLER BALL BEARING(B)
47	J25-6601	ROLLER COLLAR(A)
48	J25-6301	ROLLER COLLAR(B)
49	J25-6501	LINE ROLLER
50	J25-6401	ROLLER COLLAR(A)
51	J53-7801	ROLLER MAG COLLAR(B)
52	J80-1401	BAIL ASSY
53	J25-4901	BAIL HOLDER SCREW COLLAR
54	J25-5001	BAIL HOLDER SCREW

Key No	Part No	Description
55	G29-8201	BAIL SHAFT
56	G68-5401	BAIL SHAFT WASHER
57	G94-4501	BAIL SHAFT SPRING
58	G47-1602	BAIL SHAFT SPRING COLLAR
59	J28-3901	BAIL HOLDER COVER
60	J25-5201	BAIL HOLDER COVER SCREW
61	J55-4901	MAGSEALED CAP PACKING
62	J77-4701	MAGSEALED CAP
63	J78-2101	MAGSEALED CAP SCREW
64	J55-3802	MAGSEALED PLATE
65	H84-2807	MAGSEALED PLATE SCREW
66	H50-2200	ONEWAY CLUCH WASHER
67	H41-2602	ONEWAY CLUCH
68	J55-3701	STOPPER LEVER PACKING(B)
69	J77-4801	CLUCH RING
70	J55-2102	PINION BEARING PLATE
71	J55-2202	PINION BEARING PLATE SCREW
72	G27-9602	PINION BALL BEARING(A)
73	375-8500	PINION BEARING(A) WASHER
74	Z02-4945	PINION+DRIVE GEAR SET
75	G57-2500	PINION BEARING(B) SPRING WASHER
76	375-5200	PINION BEARING(B) WASHER
77	G46-7101	PINION BALL BEARING(B)
78	J80-2901	PINION BEARING(B) COLLAR
79	J80-0102	BODY ASSY
80	J80-0501	MAIN SHAFT
81	J80-0401	OSCILLATING POST
82	J80-1201	REAR CAP PACKING
83	J80-1301	REAR CAP
84	J77-4601	REAR CAP SCREW (B)
85	H15-8201	BAIL KICK COLLAR SCREW
86	J57-1801	BAIL KICK COLLAR
87	J80-2201	REAR CAP SCREW (A)
88	G52-3403	DRIVE BALL BEARING (A)
89	J30-1301	DRIVE BEARING (A) WASHER
90	J80-0902	ENJINE PLATE(R)
91	G67-2401	HANDLE CAP O-RING
92	J80-2101	HANDLE CAP
93	G64-4203	OSCILLATING GEAR WASHER
94	J80-2801	OSCILLATING GEAR
95	G46-6001	OSCILLATING GEAR O-RING
96	G46-6100	OSCILLATING GEAR WASHER
97	G46-6202	OSCILLATING GEAR BALL BEARING
98	G94-0402	OSCILLATING GEAR SCREW
99	H45-9901	DRIVE GEAR RING
100	G52-3403	DRIVE BALL BEARING (B)
101	G64-5600	DRIVE BEARING (B) WASHER
102	J80-1101	ENJINE PLATE PACKING
103	J80-1004	ENJINE PLATE(L)
104	H73-0801	HANDLE PACKING
105	J80-2301	HANDLE ASSY
106	G31-5302	REAR CAP SCREW WASHER(A)
107	G31-5301	REAR CAP SCREW WASHER(B)
108	375-8503	REAR CAP SCREW WASHER(C)

