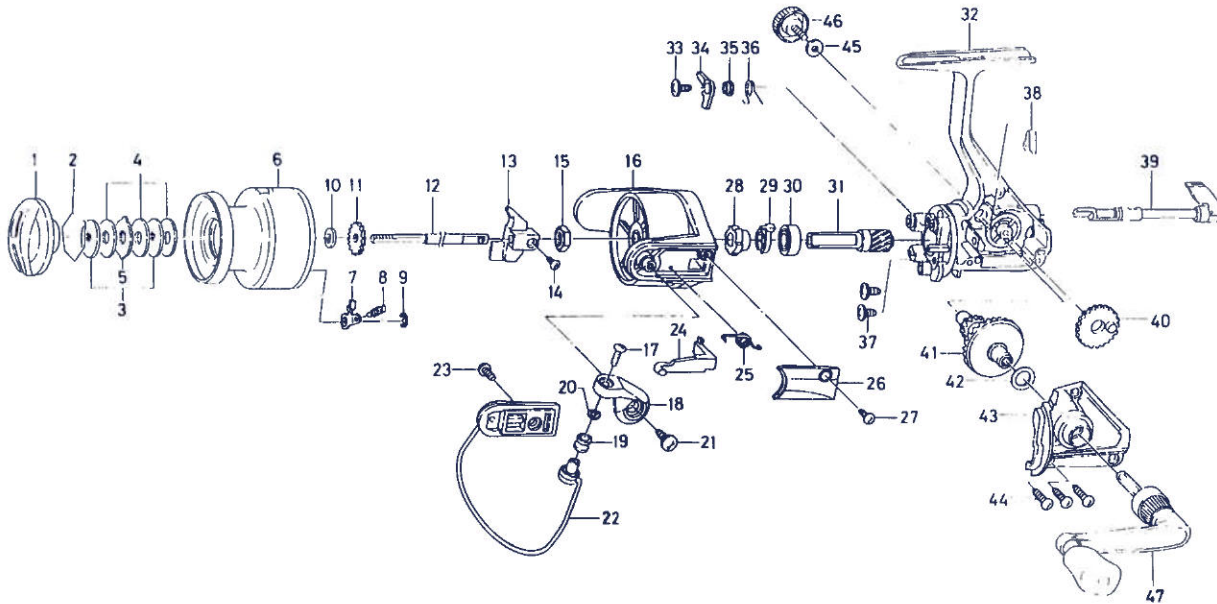


SPINNING REEL — BW1300X



Key No. 2-9

E51-5801 Spool assembly

Key

Key No.	Part No.	Part Name
1	F10-7403	Drag knob
2	171-7701	Drag washer retainer
3	E46-7201	Key washer
4	E13-6003	Drag washer
5	373-3603	Eared washer
6	E51-5701	Spool assembly
7	B07-5304	Click pawl
8	E40-3101	Click spring
9	320-5901	Click retainer
10	E46-7101	Spool washer
11	270-6501	Click gear
12	E48-4301	Main shaft
13	E45-1401	Oscillating slider
14	351-0315	Oscillating slider screw
15	341-9201	Rotor nut
16	F10-4201	Rotor
17	B67-9304	Line roller screw
18	E45-1701	Bail arm
19	L01-8201	Line roller
20	B55-4301	Line roller washer
21	E00-7101	Bail arm screw
22	E48-7201	Bail assembly
23	L01-1702	Bail trip cam screw
24	E45-1601	Bail trip lever

Key

Key No.	Part No.	Part Name
25	F12-8901	Bail spring
26	F08-8401	Bail spring cover
27	E36-4202	Bail spring cover screw
28	L01-4001	Anti-reverse ratchet
29	E38-5501	Anti-reverse pawl spring A
30	L03-6601	Ball bearing
31	E30-3401	Pinion gear
32	F10-5402	Body assembly
33	L00-1801	Anti-reverse pawl screw
34	L01-4401	Anti-reverse pawl
35	L01-4302	Anti-reverse pawl collar
36	L00-1501	Anti-reverse pawl spring B
37	E03-7801	Bearing retainer screw
38	E32-7801	Anti-reverse cam spring
39	F08-5106	Anti-reverse lever
40	E45-1301	Oscillating gear
41	F08-4801	Drive gear
42	373-7802	Drive gear washer
43	F10-5502	Side cover
44	B83-5002	Side cover screw
45	B92-4902	Handle lock washer
46	B92-5001	Handle lock screw
47	E49-3801	Handle assembly