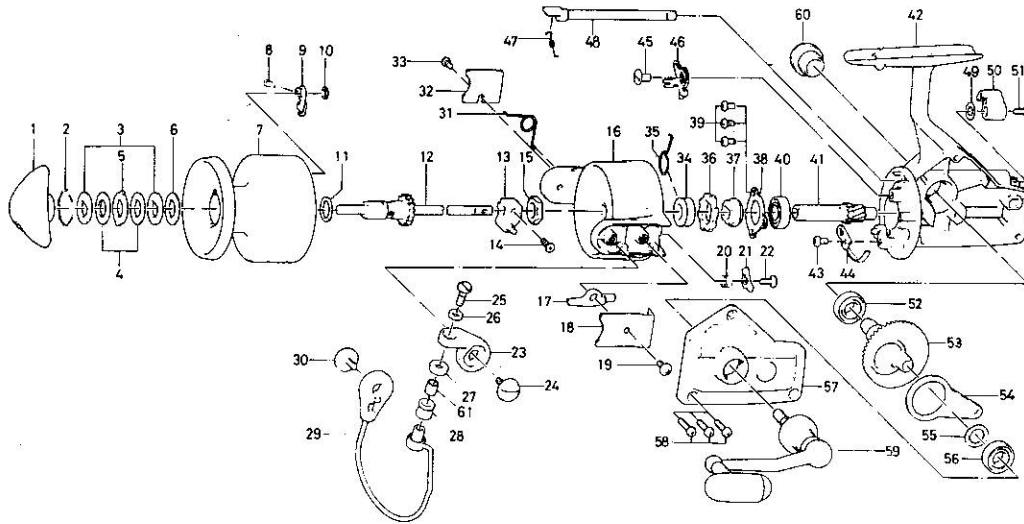


**SPINNING REEL**

**BLACK GOLD BG-20**



Key No.	Parts No.	Parts Name	Key No.	Parts No.	Parts Name
1	740-4501	Drag knob	31	B42-1701	Bail spring
2	171-7701	Drag washer retainer	32	041-8802	Bail spring cover
3	376-4001	Drag D washer	33	351-6101	Bail spring cover screw
4	375-7802	Disc washer	34	502-1301	Spring holder
5	375-8002	Drag A washer	35	145-2901	Anti-reverse claw spring
6	375-7803	Drag washer A	36	280-9501	Ratchet
7	734-7103	Spool	37	636-6711	Click gear
8	145-2101	Spool click claw spring	38	635-9901	Ball bearing ret. washer
9	B07-8201	Spool click claw	39	351-6601	Ball bearing ret. washer screw
10	320-1402	Spool click claw retainer	40	635-4801	Ball bearing
11	376-3901	Spool washer	41	403-2801	Pinion gear
12	711-5702	Main shaft	42	B31-8801	Body
13	637-3001	Oscillating support	43	351-6601	Cam kick plate screw
14	351-8901	Oscillating slider screw	44	B22-9901	Cam kick plate
15	B10-5701	Rotor nut	45	352-1102	Anti-reverse claw screw
16	202-1617	Rotor	46	B33-5601	Anti-reverse claw
17	571-1001	Bail kick lever	47	144-0321	Anti-reverse cam spring
18	041-8102	Bail kick lever cover	48	B15-6403	Anti-reverse cam
19	351-7701	Bail kick lever cover screw	49	373-2700	Anti-reverse lever washer
20	145-0701	Bail kick cam spring	50	541-7301	Anti-reverse lever
21	571-0901	Bail kick cam	51	352-2501	Anti-reverse lever screw
22	351-4701	Bail kick cam screw	52	636-6011	Ball bearing
23	231-3501	Arm lever	53	414-2302	Drive gear
24	363-5201	Arm lever screw	54	481-2401	Oscillating slider
25	363-3111	Bail screw	55	371-2800	Drive gear washer
26	375-1101	Bail washer	56	636-6011	Ball bearing
27	501-2001	Roller collar	57	B31-9901	Body cover
28	250-4321	Line roller	58	351-5901	Body cover screw
29	725-8512	Bail	59	B36-8501	Handle
30	363-5201	Bail holder screw	60	363-4701	Handle screw cap
			61	502-1401	Roller metal