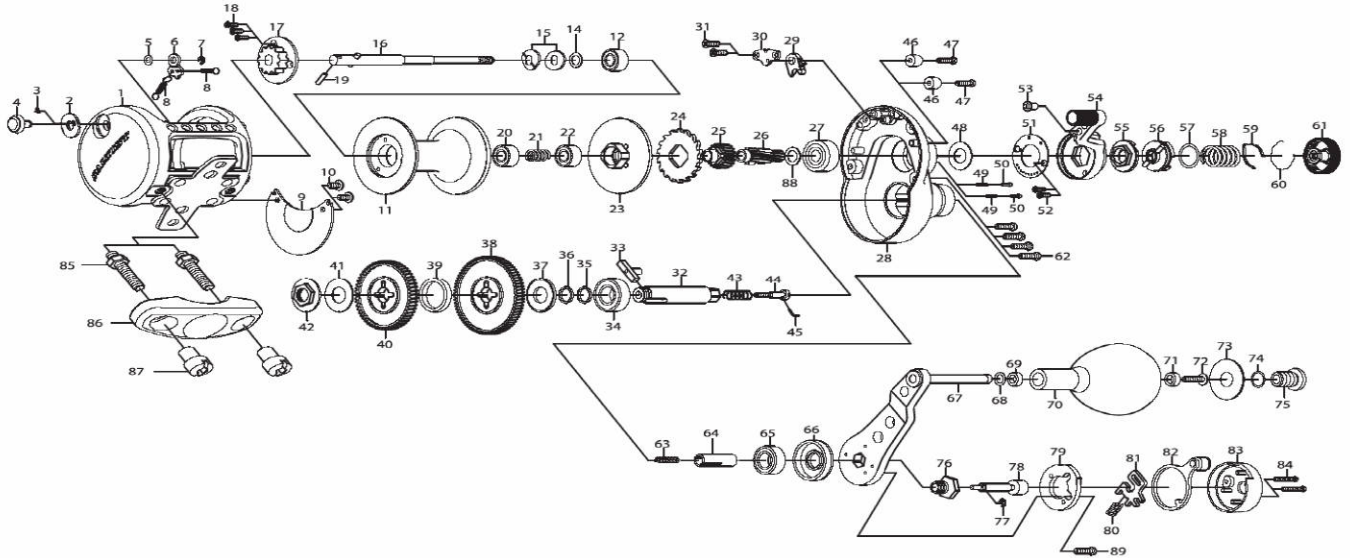


Please order by parts number, not key number
 Veuillez indiquer le numéro de la pièce (Non "Key" No.)



CONVENTIONAL REEL

SALTIST LD40 2SPD/LD50 2SPD



Key No.	Parts No.	Parts Name	Key No.	Parts No.	Parts Name
1	H41-9701	Frame	45	H31-6602	Drive shaft pin (C)
2	H42-0301	Click plate	46	H42-3901	Collar (A)
3	H42-0401	Click spring (A)	47	351-7801	Screw (D)
4	H48-5901	Click button	48	H42-3801	Washer (D)
5	F09-4802	Click button washer	49	H53-0901	Spring (B)
6	H42-0501	Click pawl	50	H53-0801	Pin (A)
7	320-1402	Click pawl retainer	51	H48-1901	Drag lever plate
8	H54-7801	Click spring (B)	52	G31-8503	Screw (E)
9	H42-0701	Frame plate	53	H42-4501	Pin (B)
10	F50-5703	Screw (A)	54	H42-4001	Drag lever
11	H42-0801	Spool	55	H42-4601	Pre-set cam (A)
12	H42-8701	Ball bearing (A)	56	H42-4701	Pre-set cam (B)
14	375-8500	Washer (A)	57	171-1001	"O" ring
15	H51-3101	Drag spring washer	58	H48-4801	Drag knob spring
16	H42-1201	Drive shaft (A)	59	F03-2401	Click leaf spring
17	H42-7601	Drag click cap	60	170-7701	Ring
18	G29-7003	Screw (B)	61	H42-4801	Pre-set drag knob
19	G32-2701	Drive shaft pin (A)	62	G47-3704	Screw (F)
20	G53-6001	Ball bearing (B)	63	H49-2801	Drive shaft spring (B)
21	H51-2501	Spring (A)	64	H42-2201	Collar (B)
22	G62-6301	Ball bearing (C)	65	G52-2801	Ball bearing (F)
23	H48-2301	Drag plate	66	H42-5101	Collar (C)
24	H42-3401	Drag ratchet	67-75	H42-5201	Handle assembly
25	H48-2001	Pinion gear (A)	76	H42-5901	Handle nut
26	H42-2801	Pinion gear (B)	77	320-5901	Retainer
27	E17-5802	Ball bearing (D)	78	H42-6001	Handle button
28	H42-1701	Right side plate	79	H42-6101	Handle cap (A)
29	E48-9001	Drag pawl	80	H42-6201	Spring (C)
30	H42-3501	Drag pawl retainer	81	H42-6301	Plate
31	G31-8503	Screw (C)	82	H42-6401	Handle lever
32	H42-1801	Drive shaft (B)	83	H42-6701	Handle cap (B)
33	H42-1901	Drive shaft pin (B)	84	G04-0809	Handle screw
34	F64-1602	Ball bearing (E)	85	H45-8301	Clamp bolt
35	G20-5503	Washer (B)	86	G38-7901	Rod clamp
36	G20-5500	Washer (C)	87	F18-7702	Clamp nut
37	H42-2301	Drive gear collar (A)	88	375-8500	Washer (E)
38	H42-2401	Drive gear (A)	89	350-8912	Screw (G)
39	H42-2501	Drive gear collar (B)	SALTIST LD50 2SPD Special Parts		
40	H42-2601	Drive gear (B)	Key No.	Parts No.	Parts Name
41	H42-2301	Drive gear collar (C)	1	H42-6801	Frame
42	H42-2701	Drive shaft nut	11	H42-7001	Spool
43	H52-8401	Drive shaft spring (A)	16	H42-7201	Drive shaft (A)
44	H42-2101	Drive shaft screw	28	H42-1702	Right side plate