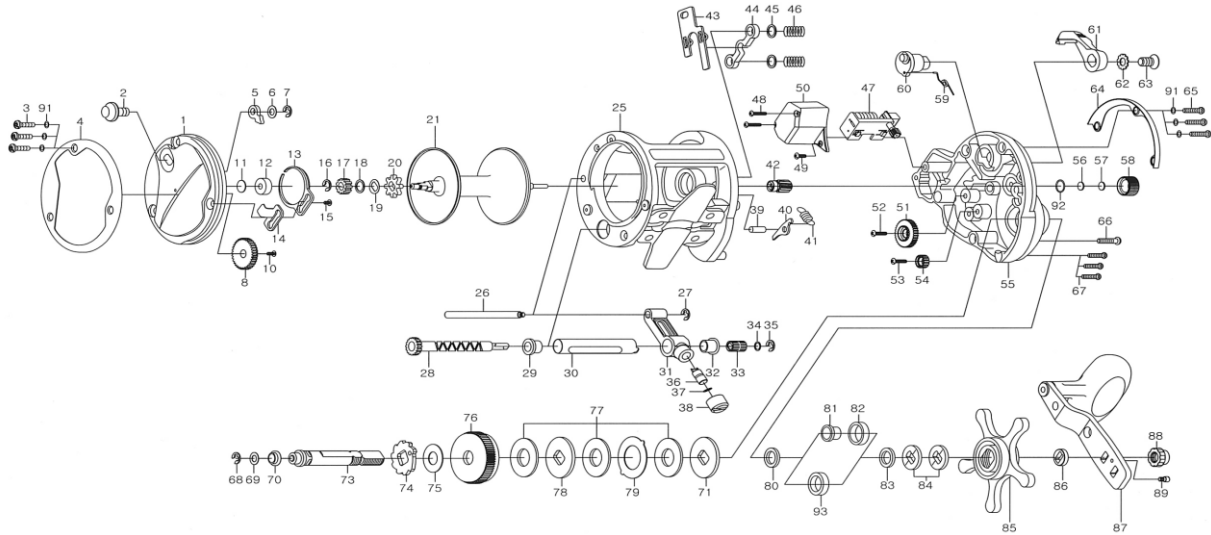


SEALINE SG57LC3B



Key No.	Part No.	Part Name	Key No.	Part No.	Part Name
1	230-2510	LEFT SIDE PLATE	47	550-1371	COUNTER ASSEMBLY
2	330-2860	CLICK BUTTON	48	460-5240	COUNTER SCREW
3	460-6070	LEFT SIDE PLATE SCREW	49	460-4160	COUNTER SCREW
4	430-1330	LEFT SIDE OUTER RING	50	220-3050	COUNTER COVER
5	190-1140	CLICK PAWL	51	240-2820	COUNTER BEAR B
6	540-4170	WASHER A	52	460-2130	COUNTER GEAR SCREW
7	200-0580	CLICK PAWL RET	53	460-5180	COUNTER GEAR SCREW
8	240-2890	IDLE GEAR	54	240-2830	COUNTER GEAR C
10	460-2150	IDLE GEAR SCREW	55	230-2475	RIGHT SIDE PLATE
11	540-2830	WASHER B	56	540-6850	SPACER
12	140-1880	BALL BEARING	57	540-4340	SPACER
13	510-5120	CLICK SPRING	58	380-1830	CAST CONTROL CAP
14	410-3040	CLICK SPRING RET	59	510-5350	CLUTCH SPRING
15	460-2260	CLICK SPRING SCREW	60	170-1340	CLUTCH CAM
16	200-0870	SPOOL GEAR RET	61	330-2750	CLUTCH LEVER
17	240-2230	SPOOL GEAR	62	540-5440	CLUTCH LEVER WASHER
18	540-5580	WASHER C	63	460-4330	CLUTCH LEVER SCREW
19	540-5570	CLICK SPRING WASHER	64	430-1340	RIGHT SIDE OUTER RING
20	240-2850	CLICK GEAR	65	460-6040	RIGHT SIDE PLATE SCREW
21	700-9240	SPOOL	66	460-6050	RIGHT SIDE PLATE SCREW
25	700-0759	FRAM ASSEMBLY	68	200-0590	DRIVE SHAFT RET
26	400-2710	STABILIZER BAR	69	540-6980	DRIVE SHAFT WASHER
27	200-0570	STABILIZER BAR RET	70	150-1760	DRIVE SHAFT BUSHING
28	470-2030	WORM SHAFT ASSEMBLY	71	540-6580	WASHER
29	150-1790	WORM SHAFT HOLDER A	73	470-3150	DRIVE SHAFT
30	270-0850	LEVEL WIND GUARD	74	240-2560	A/R RATCHET
31	270-0860	LINE GUIDE	75	540-6990	DRIVE SHAFT WASHER
32	150-1790	WORM SHAFT HOLDER B	76	250-1520	DRIVE GEAR
33	240-2880	COUNTER GEAR A	77	540-6570	DRAG WASHER
34	540-5460	WORM SHAFT HOLDER WASHER	78	540-6180	KEY WASHER
35	200-0570	WORM SHAFT RET	79	540-6190	EARED WASHER
36	400-2580	LINE GUIDE PAWL	80	540-7210	WASHER
37	540-3980	OSC PAWL WASHER	83	540-5550	WASHER F
38	380-1740	PAWL CAP	84	510-4590	DRAG SPRING WASHER
39	400-3320	A/R PAWL PIN	85	320-1220	STAR DRAG
40	530-0920	A/R PAWL	86	210-0990	SPACING SLEEV
41	510-4210	A/R PAWL SPRING	87	700-9350	HANDLE ASSEMBLY
42	260-1960	PINION GEAR	88	380-1441	HANDLE NUT
43	410-3050	YOKE PLATE	89	460-4790	HANDLE NUT SCREW
44	410-3030	YOKE PLATE	91	540-5170	WASHER G
45	540-5480	YOKE WASHER	92	430-1080	O-RING
46	510-5100	YOKE SPRING	93	140-0570	BALL BEARING