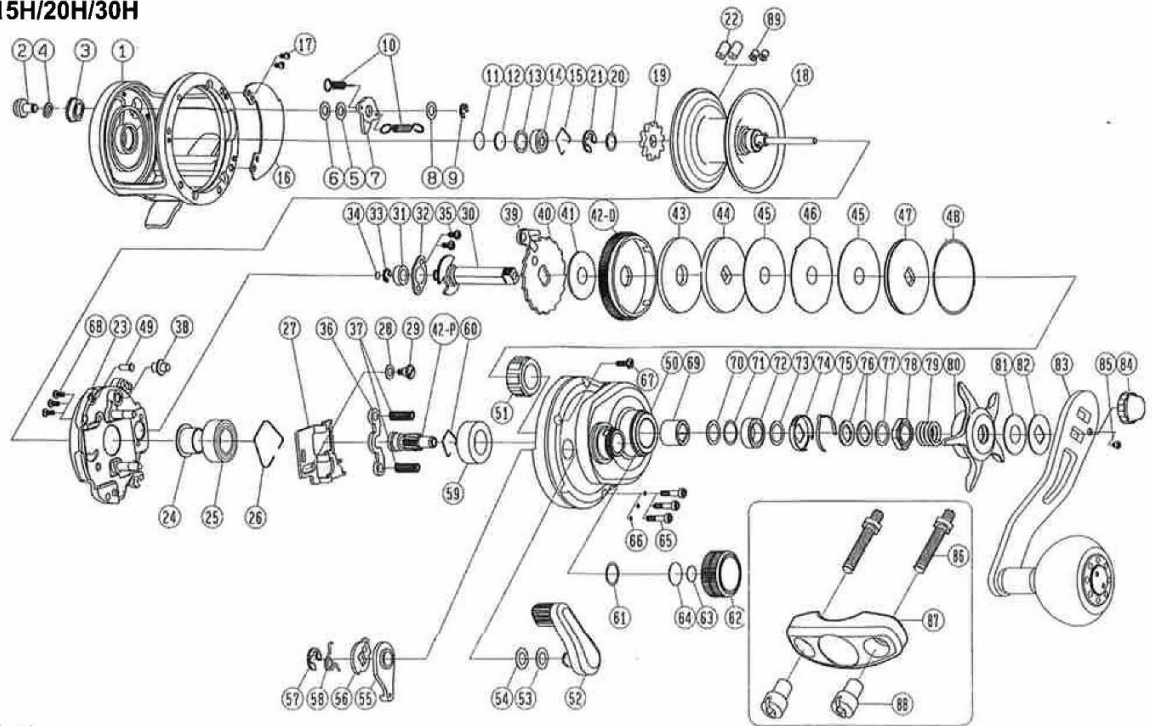




SALTIST 15H / 20H / 30H

SALTIST 15H/20H/30H



SALTIST 15H

Key No.	Part No.	Part Name	Key No.	Part No.	Part Name	Key No.	Part No.	Part Name
1	748-2010	Frame assembly	35	751-7010	Screw (B)	51	633-3010	Roller clutch
2	725-1021	Click button	36	701-1011	Yoke	52	749-7010	Clutch lever
3	725-2010	Click plate	37	708-5011	Yoke spring	53	706-9010	Clutch lever washer (A)
4	725-3010	Click collar	38	704-3010	Anti-reverse pawl pin	54	711-1010	Clutch lever washer (B)
5	617-4030	Click button washer (A)	39	710-0011	Anti-reverse pawl	55	700-1011	Clutch cam plate
6	617-4010	Click button washer (B)	40	701-2031	Anti-reverse ratchet	56	707-5010	Clutch cam
7	744-5010	Click pawl	41	714-7010	Drag washer (A)	57	207-6010	Clutch cam retainer
8	731-6030	Click button washer (C)	42-D	749-1010	Drive gear	58	706-4011	Clutch cam spring
9	201-4020	Click pawl retainer	42-P	703-4011	Pinion gear	59	749-9010	bearing
10	744-7010	Click spring	43	749-2010	Drag washer (B)	60	711-2010	Bearing retainer (B)
11	757-4040	Bearing washer (A)	44	704-9011	Key washer (A)	61	711-3010	"O"ring (B)
12	710-5011	Bearing washer (B)	45	630-4020	Drag washer (C)	62	750-0010	Cast control cap
13	703-3010	Bearing washer (C)	46	701-4010	Key washer (B)	63	175-5033	Washer (D)
14	427-7011	Ball bearing (A)	47	749-3010	Key washer (C)	64	711-5010	Washer (E)
15	709-5010	Bearing retainer (A)	48	725-7010	"O"ring (A)	65	705-3011	Screw (C)
16	699-2041	Frame plate	49	706-5011	Pin	66	711-6010	"O"ring (C)
17	709-7010	Frame plate screw	50	749-5010	Right side plate	67	706-7011	Screw (D)
18	748-4010	Spool assembly	51	633-3010	Roller clutch	68	705-0020	Screw (E)
19	724-4010	Click gear	52	749-7010	Clutch lever	69	610-7021	Gear shaft collar
20	758-5010	Washer (A)	53	706-9010	Clutch lever washer (A)	70	709-1011	Washer (E)
21	207-6010	Retainer (A)	54	711-1010	Clutch lever washer (B)	71	729-6010	"O"ring (D)
22	744-3010	Brake collar (A)	55	700-1011	Clutch cam plate	72	523-4030	Ball bearing (C)
23	748-8010	Set plate	56	707-5010	Clutch cam	73	709-1031	Washer (F)
24	700-7010	Ball bearing collar	57	207-6010	Clutch cam retainer	74	709-2010	Click leaf spring holder
25	156-8030	Ball bearing (B)	58	706-4011	Clutch cam spring	75	715-6010	Click leaf spring
26	751-8010	Bearing retainer (A)	59	749-9010	bearing	76	705-6010	Drag spring washer
27	700-9020	Yoke plate	60	711-2010	Bearing retainer (B)	77	694-2010	Washer (J)
28	709-8010	Washer (B)	61	711-3010	"O"ring (B)	78	705-5012	Nut
29	706-8011	Screw (A)	62	750-0010	Cast control cap	79	711-7010	Spring
30	751-6010	Drive shaft	63	175-5033	Washer (D)	80	102-2081	Star drag
31	575-3010	bearing	64	711-5010	Washer (E)	81	715-1011	Handle collar (A)
32	700-6010	Drive shaft retainer	65	705-3011	Screw (C)	82	711-9011	Handle collar (B)
33	208-0020	Retainer (B)	66	711-6010	"O"ring (C)	83	750-1010	Handle assembly
34	709-9010	Washer (C)	67	706-7011	Screw (D)	84	220-3062	Handle nut
						85	218-2011	Handle nut screw

SALTIST 20H

Key No.	Part No.	Part Name
1	752-5010	Frame assembly
16	699-2051	Frame plate
18	752-1010	Spool assembly
50	749-5020	Right side plate

SALTIST 30H

Key No.	Part No.	Part Name
1	752-7010	Frame assembly
16	699-2061	Frame plate
18	752-4010	Spool assembly
50	749-5030	Right side plate