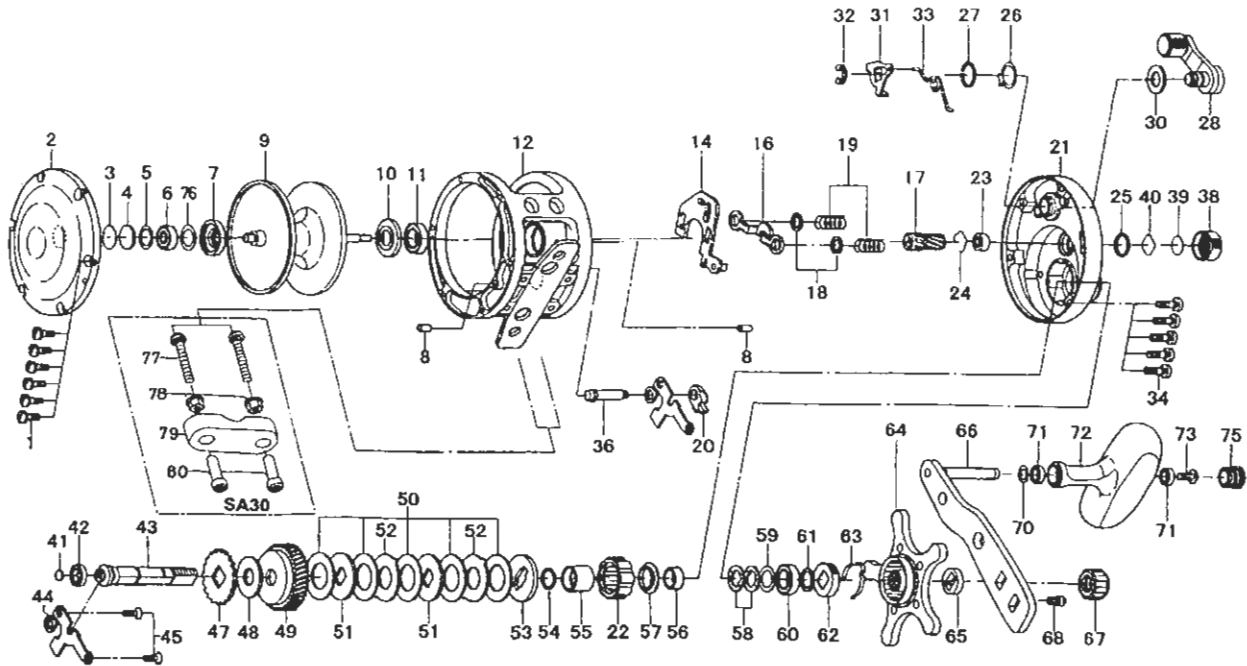


# CONVENTIONAL REEL

# SALTIGA-15 • 20 • 30



Key No.	Parts No.	Parts Name
1	G04-0803	L/S PLT SCREW
2	G21-2301	L/S PLT
3	G27-6300	BERAING WASHER A
4	G21-2401	BERAING WASHER B
5	F95-6702	BERAING WASHER C
6	637-2101	BALL BEARING A
7	G22-0501	WATER SHIELD A
8	G21-1701	PIN
9	G22-0903	SPOOL
10	G21-1901	WATER SHIELD B
11	F05-5503	BALL BEARING B
12	G22-0802	FRAME
14	G21-3201	YOKE PLT
16	G21-3601	YOKE
17	G25-8901	PINION GEAR
18	E03-7706	YOKE WASHER
19	F93-5201	YOKE SPRING
20	E48-9001	A/R PAWL
21	G33-0801	R/S PLT
23	E08-8003	BALL BEARING C
24	E21-9701	BEARING RET A
25	171-5201	O RING A
26	G21-5301	CLUTCH CAM WASHER
27	171-5201	O RING B
28	G21-5401	CLUTCH LEVER
30	G15-7001	CLUTCH LEVER WASHER
31	G21-6401	CLUTCH CAM
32	320-7601	CLUTCH CAM RET
33	G30-1201	CLUTCH CAM SPRING
34	G33-0601	R/S PLT SCREW
36	G21-2701	A/R PAWL PIN
38	G21-8301	CAST CONTROL CAP
39	B17-5503	SPACER A
40	B17-5401	SPACER B
41	F57-5601	DRIVE SHAFT WASHER A
42	G33-C301	DRIVE SHAFT BUSH
43	G21-2601	DRIVE SHAFT
44	G21-2801	DRIVE SHAFT RET
45	G21-2901	DRIVE SHAFT RET SCREW
47	G21-3902	A/R RATCHET
48	G21-4101	DRIVE SHAFT WASHER B
49	G25-9001	DRIVE GEAR

Key No.	Parts No.	Parts Name
50	G29-0801	DRAG WASHER
51	B36-0301	KEY WASHER A
52	372-3835	EARED WASHER
53	G21-4401	KEY WASHER B
54	F65-7801	O RING C
55	G29-0901	COLLAR A
56	G21-6901	COLLAR B
57	G21-7001	WATER SHIELD C
58	150-8901	DRAG SPRING WASHER
59	373-7812	BALL BEARING WASHER A
60	F05-5502	BALL BEARING D
61	F36-6801	BALL BEARING WASHER B
62	G21-7101	CLICK LEAF SPRING HOLDER
63	F97-7801	CLICK LEAF SPRING
64	G21-7201	STAR DRAG
65	G21-7601	SPACING SLEEVE
66	G21-7801	HANDLE ARM
67	G22-0301	HANDLE NUT
68	G21-8201	HANDLE NUT SCREW
70	375-3000	HANDLE KNOB WASHER
71	F05-5601	BALL BEARING E
72	G16-4001	HANDLE KNOB
73	E45-4003	HANDLE KNOB SCREW A
75	G16-4402	HANDLE KNOB SCREW B
76	F13-2602	BEARING WASHER D

### SPECIAL PARTS FOR SA20

Key No.	Parts No.	Parts Name
9	G21-2003	SPOOL
12	G21-1102	FRAME
21	G33-0401	R/S PLT

### SPECIAL PART FOR SA30

Key No.	Parts No.	Parts Name
9	G33-1202	SPOOL
12	G33-1001	FRAME
21	G33-1501	R/S PLT
77	F18-7601	CLAMP BOLT
78	F18-7801	CLAMP NUT
79	G35-6401	ROD CLAMP
80	F18-7701	ROD BRACE NUT