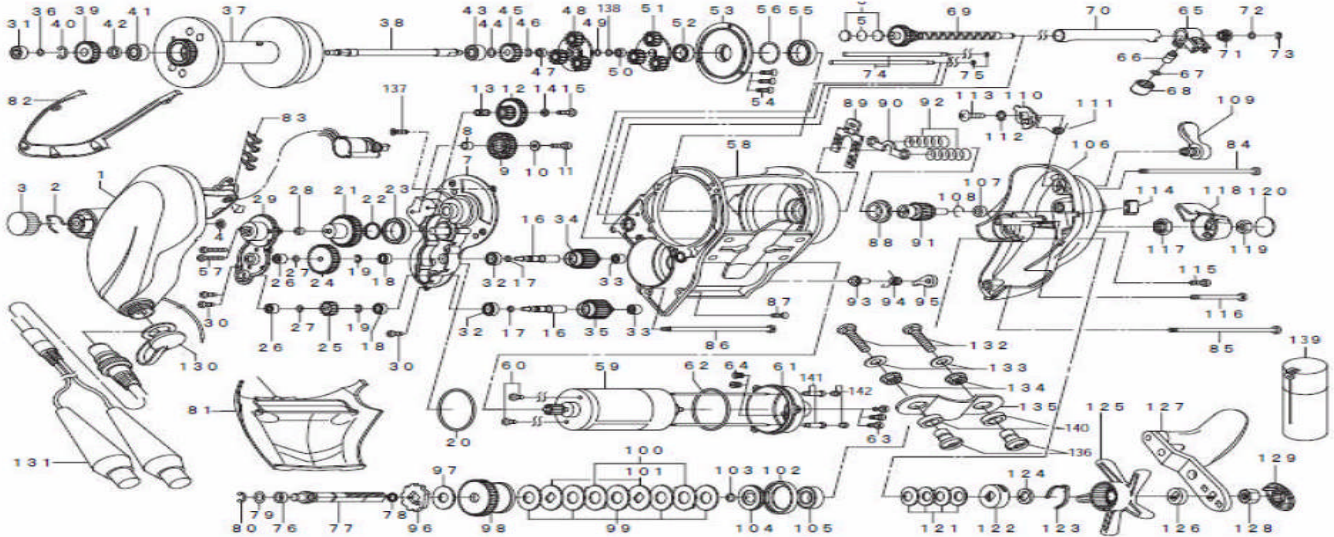


ELECTRONIC REEL

SEABORG 1000MT



Key No.	Part No.	Parts Name	Key No.	Part No.	Parts Name	Key No.	Part No.	Parts Name
1	H08-6701	IC MODULE L/S PLATE SET	49	B41-1701	MOTOR GEAR(A) WASHER	97	374-6604	DRIVE SHAFT WASHER(B)
2	E03-3201	BRAKE CLICK SPRING	50	G46-9004	MOTOR GEAR(B) BALL BEARING	98	G67-7901	DRIVE GEAR
3	G67-3101	BRAKE ADJ KNOB	51	G67-5801	MOTOR GEAR(B)	99	B36-0209	EARED WASHER
4	G77-9001	MECHANICAL BRAKE KNOB RET	52	G15-6801	SPOOL PLATE BALL BEARING(A)	100	372-3833	DRAG LIP WASHER
5	B17-5503	MECHANICAL BRAKE WASHER(A)	53	G67-6001	SPOOL PLATE	101	B36-0302	DRAG DISC WASHER
6	F67-3802	MECHANICAL BRAKE WASHER(B)	54	E13-4505	SPOOL PLATE SCREW	102	F81-7001	DRAG COLLAR SHIELD
7	G67-9601	SET PLATE(A)	55	E29-2701	SPOOL PLATE BALL BEARING(B)	103	F65-7801	DRAG O RING
8	F57-3101	IDLE GEAR(A) COLLAR	56	F68-2601	SPOOL PLATE BALL BEARING(B) WASHER	104	G67-8001	DRIVE SHAFT COLLAR
9	F59-2101	IDLE GEAR(A)	57	G78-5801	SETPLATE SCREW(B)	105	G43-9402	HANDLE BALL BEARING
10	F57-1902	IDLE GEAR(A) WASHER	58	H08-8301	FRAME	106	G69-2002	R/S PLATE
11	F84-8401	IDLE GEAR(A) SCREW	59	H19-4501	MOTOR	107	E35-1501	PINION GEAR BUSHING(B)
12	G67-3301	IDLE GEAR(B)	60	F91-4401	MOTOR SCREW	108	E21-9701	PINION GEAR RING
13	G07-6501	IDLE GEAR(B) COLLAR	61	H08-7301	MOTOR HOLDER	109	F46-9016	CLUTCH LEVER
14	B55-4301	IDLE GEAR(B) WASHER	62	G15-8601	MOTOR HOLDER O RING	110	F59-7901	CLUTCH CAM
15	351-1805	IDLE GEAR(B) SCREW	63	351-0905	MOTOR HOLDER SCREW	111	F59-8201	CLUTCH CAM SPRING
16	G67-3401	MOTOR GEAR SHAFT	64	G17-3401	CORD COVER	112	160-8001	CLUTCH CAM WASHER
17	G67-3501	MOTOR GEAR SHAFT O RING	65	G81-2102	LEVELWIND	113	353-8212	CLUTCH CAM SCREW
18	B35-8605	IDLE GEAR BALL BEARING	66	122-0602	LEVELWIND PAWL	114	E28-6003	LINE HOLDER
19	320-1402	MOTOR GEAR SHAFT RETAINER	67	F95-0200	LEVELWIND WASHER	115	351-6401	RS PLATE SCREW(C)
20	G15-8601	MOTOR O RING	68	E35-4101	LEVELWIND NUT	116	G69-2201	RS PLATE SCREW(D)
21	H11-3501	IDLE GEAR(C)	69	H08-7401	WORM SHAFT	117	G13-9601	POWER LEVER NUT(A)
22	G67-2401	IDLE GEAR(C) O RING	70	H08-7601	WORM SHIELD	118	F86-2301	POWER LEVER
23	E29-2701	IDLE GEAR(C) BALL BEARING(A)	71	F46-7201	WORM SHAFT BUSHING	119	342-4004	POWER LEVER NUT(B)
24	H11-2501	IDLE GEAR(D)	72	B41-1706	WORM SHAFT WASHER	120	F86-2801	POWER LEVER COVER
25	H11-2601	IDLE GEAR(E)	73	320-5901	WORM SHAFT RETAINER	121	F67-3601	DRAG SPRING WASHER
26	E08-8005	IDLE GEAR(D) BALL BEARING	74	G36-2901	LEVELWIND POST	122	F47-0002	DRAG HOLDER
27	F77-4603	IDLE GEAR WASHER	75	B86-4101	LEVELWIND POST RETAINER	123	B74-7702	DRAG HOLDER LEAF SPRING
28	G07-7201	IDLE GEAR(C) BALL BEARING(B)	76	G08-1901	DRIVE SHAFT BUSHING	124	F47-0101	HANDLE WASHER
29	G67-9101	SET PLATE(B)	77	G67-7301	DRIVE SHAFT	125	F55-0424	STAR DRAG
30	351-0905	SPOOL PLATE SCREW (A)	78	F65-7801	DRIVE SHAFT O RING	126	F47-0303	HANDLE COLLAR
31	637-2102	SPOOL SHAFT BALL BEARING	79	375-5801	DRIVE SHAFT WASHER	127	G67-8101	HANDLE
32	G52-2702	MOTOR GEAR SHAFT BALL BEARING	80	320-7601	DRIVE SHAFT RETAINER	128	B86-2102	HANDLE NUT
33	E08-8005	MOTOR GEAR BALL BEARING	81	H08-7801	FINGER GUARD	129	F47-1207	HANDLE CAP
34	H11-3601	MOTOR GEAR(HI)	82	H08-7901	IC MODULE COVER	130	F66-1002	CONNECTOR CAP
35	H11-3701	MOTOR GEAR(LOW)	83	E00-4301	IC MODULE COVER SCREW	131	F59-8405	ELECTRIC POWER CORD
36	G77-2101	SPOOL SHAFT GEAR SPRING WASHER	84	H08-8001	R/S PLATE SCREW(A)	132	F18-7601	CLAMP SCREW
37	H08-6901	SPOOL	85	H08-8101	R/S PLATE SCREW(B)	133	B93-7802	CLAMP SCREW WASHER
38	H08-7101	SPOOL SHAFT	86	H08-8201	FRAME SCREW(A)	134	F18-7801	CLAMP SCREW NUT
39	H11-2901	SPOOL SHAFT GEAR	87	E13-4501	FRAME SCREW(B)	135	041-9901	CLAMP PLATE
40	320-1611	SPOOL GEAR RETAINER	88	G67-7501	PINION GEAR BUSHING(A)	136	342-5301	CLAMP PLATE NUT
41	G53-5101	SPOOL PLATE BALL BEARING(A)	89	F59-7001	YOKE PLATE	137	E13-4508	SETPLATE SCREW(C)
42	G67-5101	SPOOL SHAFT GEAR COLLAR	90	E29-0601	YOKE	138	B41-1700	MOTOR GEAR(A) WASHER
43	G53-6001	SPOOL PLATE BALL BEARING(B)	91	G67-7601	PINION GEAR	139	X14-8901	REEL GUARD OIL
44	375-3002	SPOOL GEAR WASHER	92	G47-3401	CLUTCH PLATE SPRING	140	G98-1701	COLLAR
45	G67-5201	SPOOL GEAR	93	F77-3001	ANTI-REVERSE PAWL HOLDER	141	F65-7701	CORD SHIELD(A)
46	320-1402	SPOOL GEAR RETAINER	94	G67-7701	ANTI-REVERSE PAWL SPRING	142	F65-8501	CORD SHIELD(B)
47	G46-9004	MOTOR GEAR(A) BALL BEARING	95	F59-7201	ANTI-REVERSE PAWL			
48	G67-5301	MOTOR GEAR(A)	96	G67-7801	RATCHET			