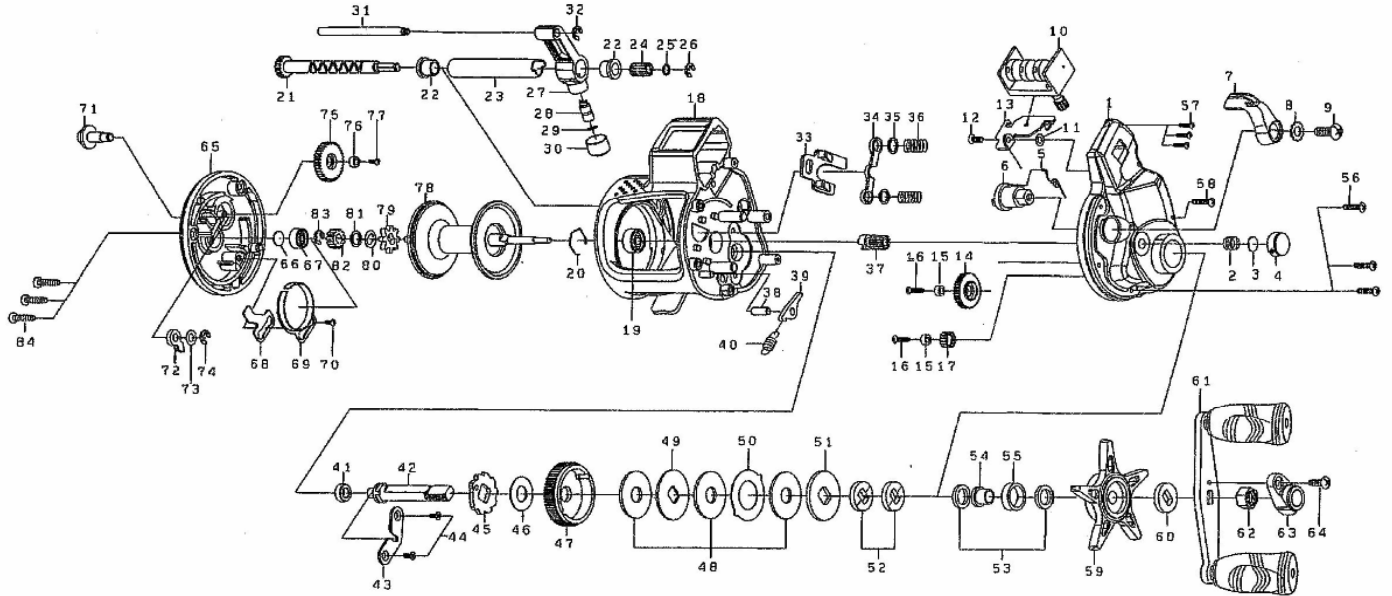


Please order by parts number, not key number
 Veuillez indiquer le numéro de la pièce (Non "Key" No.)



ACCUDEPTH PLUS 17LC

CONVENTIONAL REEL



KeyNo.	Parts No.	Parts Name	KeyNo.	Parts No.	Parts Name	KeyNo.	Parts No.	Parts Name
1	E61-9901	Right side plate	29	F95-0200	Line guide washer	57	B00-8601	Right side plate screw(B)
2	B93-9601	Spool tension spring	30	E57-4101	Pawl cap	58	G35-2301	Right side plate screw(C)
3	375-7405	Washer(A)	31	E57-4201	Stabilizer bar	59	E57-6901	Star drag
4	B93-9701	Cast control cap	32	320-5901	Stabilizer bar retainer	60	E25-3901	Spacing sleeve (B)
5	E57-1301	Clutch spring	33	E57-4301	Yoke plate	61	E61-9501	Handle assembly
6	E57-1401	Clutch cam	34	E57-4401	Yoke	62	B86-2102	Handle nut
7	E57-1502	Clutch lever	35	E57-4501	Yoke washer	63	E44-0001	Handle nut plate
8	160-8001	Clutch lever lock	36	E57-4601	Yoke spring	64	351-1803	Handle nut plate screw
9	E00-7601	Clutch lever screw	37	E57-4701	Pinion gear	65	E57-7103	Left side plate
10	F09-2102	Counter assembly	38	E57-5001	Anti-reverse pawl pin	66	375-7405	Washer (C)
11	373-1300	Counter washer	39	E57-5101	Anti-reverse pawl	67	E59-8901	Bushing (B)
12	E31-6701	Counter screw	40	E57-5201	Anti-reverse pawl spring	68	E57-7301	Click spring retainer
13	E57-1801	Counter plate	41	E57-5301	Drive shaft Bushing	69	E57-7401	Click spring
14	E57-2101	Counter gear (A)	42	E57-5401	Drive shaft	70	B83-4402	Click spring screw
15	B65-6201	Counter gear collar	43	E57-5501	Drive shaft retainer	71	E57-7502	Click button
16	E10-7401	Counter gear screw	44	E57-8601	Drive shaft retainer screw	72	E57-9901	Click pawl
17	E57-2201	Counter gear (B)	45	E57-5602	Clutch wheel	73	373-1600	Click pawl washer
18	E61-9601	Frame assembly	46	E57-5901	Drive shaft washer	74	320-1402	Click pawl retainer
19	E61-9301	Bushing (A)	47	E57-6001	Drive gear	75	E57-7601	Idle gear
20	E57-3001	Bearing retainer	48	E57-6101	Drag washer	76	B65-6201	Idle gear collar
21	E57-3302	Worm shaft assembly	49	E57-6201	Key washer (A)	77	E10-7401	Idle gear screw
22	E57-3601	Worm shaft holder	50	E57-6301	Eared washer	78	E61-9801	Spool
23	E57-3701	Level wind guard	51	E57-6202	Key washer (B)	79	E57-8101	Click gear
24	E57-3801	Counter gear (C)	52	E57-6401	Drag spring washer	80	E57-8201	Click spring washer
25	G47-5002	Worm shaft holder	53	E57-6501	Washer(B)	81	E57-8301	Washer (D)
26	320-5901	Wormshaft retainer	54	E57-6601	Spacing sleeve (A)	82	E57-8401	Spool gear
27	E57-3101	Line guide	55	E57-6701	Bushing (B)	83	320-8002	Spool gear retainer
28	E57-4001	Line guide pawl	56	E62-0001	Right side plate screw(A)	84	E62-0001	Left side plate screw