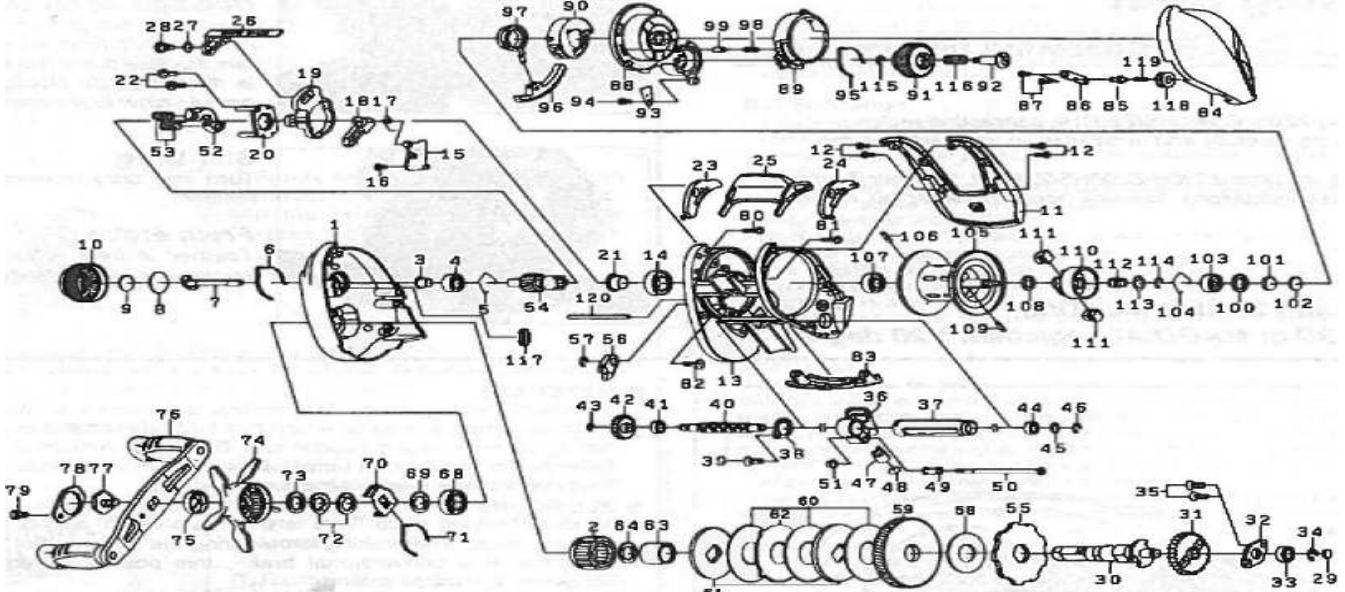


Please order by parts number, not key number
 Veuillez indiquer le numéro de la pièce (Non "Key" No.)



BAITCASTING REEL

Z200HL



Key No.	Parts No.	Parts Name	Key No.	Parts No.	Parts Name
1	H69-5301	Left side plate	55	H31-2501	Clutch Wheel
2	F55-2703	Roller clutch	56	H70-8401	Stopper
3	H15-9501	Ball bearing collar (A)	57	B33-9801	Retainer (A)
4	F81-1804	Ball bearing (A)	58	H35-9401	Drive shaft washer
5	H16-0801	Bearing retainer (A)	59	H69-5501	Drive gear
6	H16-0901	Click leaf spring (A)	60	H22-7101	Drag washer
7	H15-9601	Pinion shaft	61	H35-9301	Key washer (A)
8	H16-1001	Spacer (A)	62	H22-7301	Eared washer
9	B17-5503	Spacer (B)	63	H15-7201	Gear shaft collar
10	H28-1203	Cast control cap	64	373-7816	Bearing washer (A)
11	H28-1302	Cover	68	G52-3403	Ball bearing (D)
12	G55-7101	Cover screw	69	373-7810	Bearing washer (B)
13	H69-5401	Frame assembly	70	H15-8801	Click leaf spring holder
14	G52-3403	Ball bearing (B)	71	H15-8701	Click leaf spring (B)
15	H55-4501	Clutch plate	72	150-8901	Drag spring washer
16	H29-4101	Screw (A)	73	G69-4201	Washer (C)
17	H55-4601	Clutch cam spring	74	H69-4102	Star drag
18	H55-4701	Clutch trip lever	75	H32-6801	Handle collar
19	H55-4801	Clutch cam	76	H69-4001	Handle assembly
20	H28-2001	Clutch cam plate (A)	77	H16-6801	Handle screw (A)
21	H26-6601	Ball bearing collar (B)	78	H28-3603	Handle screw plate
22	B03-2904	Clutch cam screw	79	H25-7001	Handle screw (B)
23	H28-2101	Spacer (C)	80	G04-0801	Screw (D)
24	H28-2201	Spacer (E)	81	G04-0802	Screw (E)
25	H28-2301	Clutch lever	82	E13-4516	Screw (F)
26	H55-4901	Clutch cam plate (B)	83	H28-3703	Front plate
27	H15-9201	Washer (A)	84	H69-5601	Right side plate
28	H15-9301	Screw (B)	85	H48-5102	Screw (G)
29	G09-9800	Washer (B)	86	H28-4201	Right side plate retainer
30	H69-3702	Drive shaft	87	G17-1402	Screw (H)
31	H27-5001	Drive shaft gear	88	H55-5701	Right set plate (A)
32	H15-6501	Plate	89	H55-5801	Brake adjusting knob (A)
33	G53-8003	Ball bearing(C)	90	H69-4301	Right set plate (B)
34	320-8002	Retainer	91	H28-4703	Brake adjusting knob (B)
35	E13-4509	Screw (J)	92	H28-4801	Set plate screw
36	H28-2601	Line guide	93	H28-4901	Set plate retainer
37	H28-2901	Level wind guard	94	E49-2003	Screw (I)
38	H28-9101	Worm shaft plate	95	H28-5001	Brake click spring
39	H29-4101	Screw (C)	96	H55-5901	Magnet holder
40	H69-3901	Worm shaft	97	H69-4401	Magnet holder gear
41	G72-0001	Worm shaft bearing (A)	98	H28-5501	Brake adjusting knob spring
42	H27-5101	Worm shaft gear	99	H28-5601	Brake adjusting knob pawl
43	B33-9801	Worm shaft retainer (A)	100	G18-5101	Spacer (D)
44	G72-0001	Worm shaft bearing (B)	101	375-7411	Spacer (F)
45	B41-1700	Worm shaft washer	102	375-7400	Spacer (G)
46	320-5901	Worm shaft retainer (B)	103	G51-1506	Ball bearing (E)
47	H16-8601	Line guide pawl	104	H44-8401	Bearing retainer (B)
48	G09-9800	Line guide washer	105-114	H69-3401	Spool assembly
49	H16-8701	Line guide collar	115	B33-9801	Brake dial retainer
50	H27-5201	Line guide screw	116	H44-0001	Set plate spring
51	H43-2401	Front plate collar	117	H44-0201	Right side plate spacer
52	H55-5001	Yoke	118	H48-4901	Right side plate nut
53	H28-3201	Yoke spring	119	H46-5001	Right side plate spring
54	H55-5101	Pinion gear	120	H50-7201	Stabilizer bar