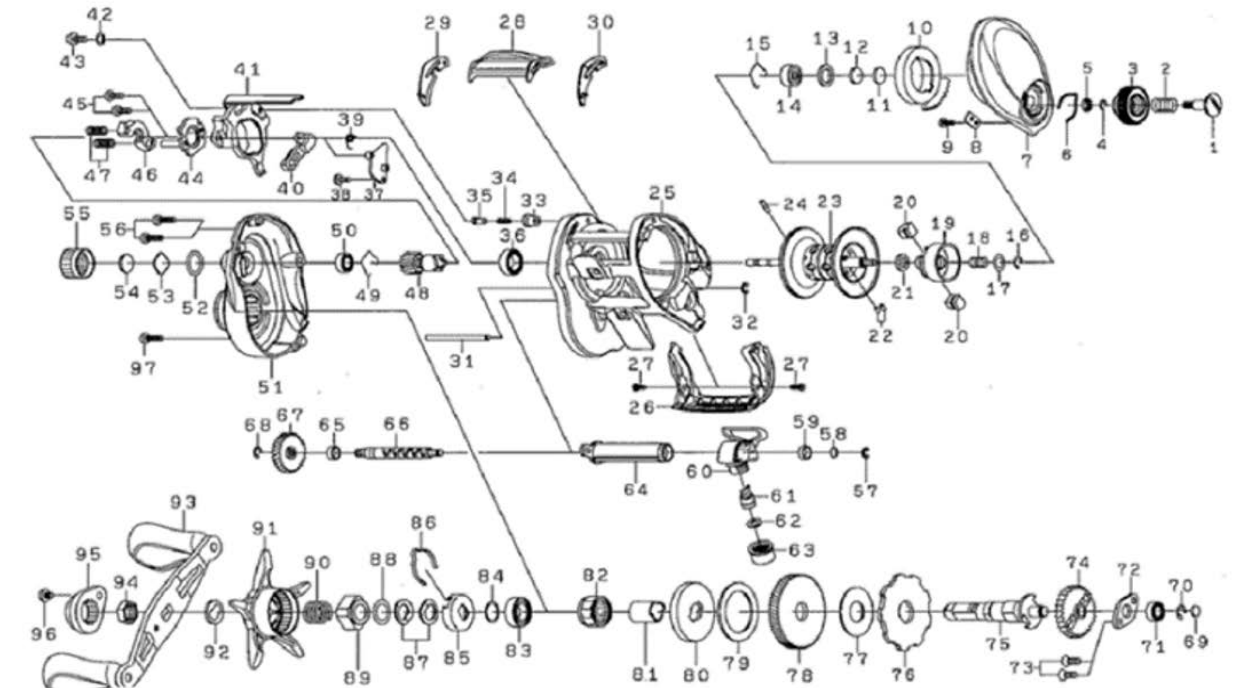




# Baitcasting Reel

# TTU100HL/HSL

Please order by parts number, not key number  
Veuillez indiquer le numéro de la pièce (Non "Key" No.)



Key	Part No	Description
1	J71-6301	BRAKE DIAL SCREW
2	E16-7101	BRAKE DIAL SPRING
3	J69-4902	BRAKE DIAL
4	B33-9801	BRAKE DIAL RETAINER(A)
5	F63-7701	BRAKE DIAL COLLAR
6	H66-3401	BRAKE DIAL LEAF SPRING
7	J71-6101	RS PLATE
8	H91-5501	BRAKE DIAL RETAINER(B)
9	G93-9301	BRAKE DIAL RETAINER(B)SCREW
10	J69-5001	MAGNET HOLDER
11	375-7404	RS BEARING WASHER(A)(0.1MM)
12	375-7411	RS BEARING WASHER(B)
13	G18-5101	RS BEARING WASHER(C)
14	G51-1503	RS BALL BEARING
15	F03-2201	RS BEARING RETAINER
16-24	Z02-4117	SPOOL UNIT ( 16 - 24 )
25	J71-5301	FRAME
26	J69-4601	FRONT COVER
27	H53-1508	FRONT COVER SCREW
28	J69-3301	CLUTCH LEVER
29	J69-2801	CLUTCH LEVER PLATE (L)
30	J69-2701	CLUTCH LEVER PLATE (R)
31	J28-1902	OSCILLATING POST
32	H70-4101	OSCILLATING POST RETAINER
33	J69-3401	CLUTCH CAM PLATE PIN SPRING COLLAR
34	H92-8801	CLUTCH CAM PLATE PIN SPRING
35	J05-5201	CLUTCH CAM PLATE PIN
36	B86-1704	CLUTCH CAM BALL BEARING
37	J71-5701	KICK LEVER PLATE (A)
39	J40-7801	KICK LEVER SPRING
40	J63-8601	KICK LEVER
41	J71-5401	CLUTCH CAM
42	H15-9201	CLUTCH CAM SCREW WASHER
43	352-2501	CLUTCH CAM SCREW
44	H65-9101	KICK LEVER PLATE (B)
45	B03-2904	KICK LEVER PLATE (B) SCREW
46	H94-4401	CLUTCH PLATE
47	J31-3901	CLUTCH SPRING
48	J71-5902	PINION GEAR
49	H18-0501	PINION RETAINER
50	G43-1102	PINION BALL BEARING
51	J71-5101	LS PLATE
52	B05-5201	MECHANICAL BRAKE O-RING
53	J21-3101	MECHANICAL BRAKE WASHER (A)
54	B17-5503	MECHANICAL BRAKE WASHER (B)

Key	Part No	Description
55	J69-2502	ZERO ADJUSTE KNOB(MCNICL.BR.KNOB)
56	G04-0828	LS PLATE SCREW (A)
57	320-5901	WORM SHAFT RETAINER
58	B41-1702	WORM SHAFT WASHER(0.1MM)
59	G72-0001	WORM SHAFT COLLAR
60	J24-3303	LEVEL WIND
61	121-4212	PAWL
62	373-1300	PAWL WASHER(0.1MM)
63	F40-2801	PAWL HOLDER NUT
64	J71-5801	WORM SHIELD
65	J24-3601	WORM SHAFT
67	J69-3901	WORM SHAFT GEAR
69	G09-9800	GEAR SHAFT WASHER(0.1MM)
70	320-8002	GEAR SHAFT RETAINER
71	G46-6202	GEAR SHAFT BALL BEARING
72	J69-3701	GEAR SHAFT PLATE
73	E13-4509	GEAR SHAFT PLATE SCREW
74	J69-3601	WORM GEAR
75	J69-3502	GEAR SHAFT
76	H66-0901	RATCHET
77	J08-5101	DRIVE GEAR WASHER
78	J71-6002	DRIVE GEAR
79	H35-9002	DRAG WASHER
80	J69-4401	DRAG DISC WASHER
81	J37-7801	DRAG COLLAR
82	J54-0401	ONEWAY CLUTCH
84	B55-3801	HANDLE BALL BEARING WASHER
85	F02-8203	DRAG HOLDER
86	F03-2401	DRAG HOLDER LEAF SPRING
87	150-8901	DRAG SPRING WASHER
88	H92-9501	STAR DRAG WASHER
89	H91-2002	DRAG NUT
90	J01-1901	DRAG NUT SPRING
91	H91-1901	STAR DRAG
92	F57-6601	HANDLE WAHSER
93	J72-8801	HANDLE ASSEMBLY
94	G79-3302	HANDLE NUT
95	H83-4507	HANDLE LOCK PLATE
96	353-8301	HANDLE LOCK PLATE SC

### TTU100HSL Special Parts

Key	Part No	Description
48	J71-6402	PINION GEAR
51	J71-5102	LS PLATE
78	J71-6502	DRIVE GEAR