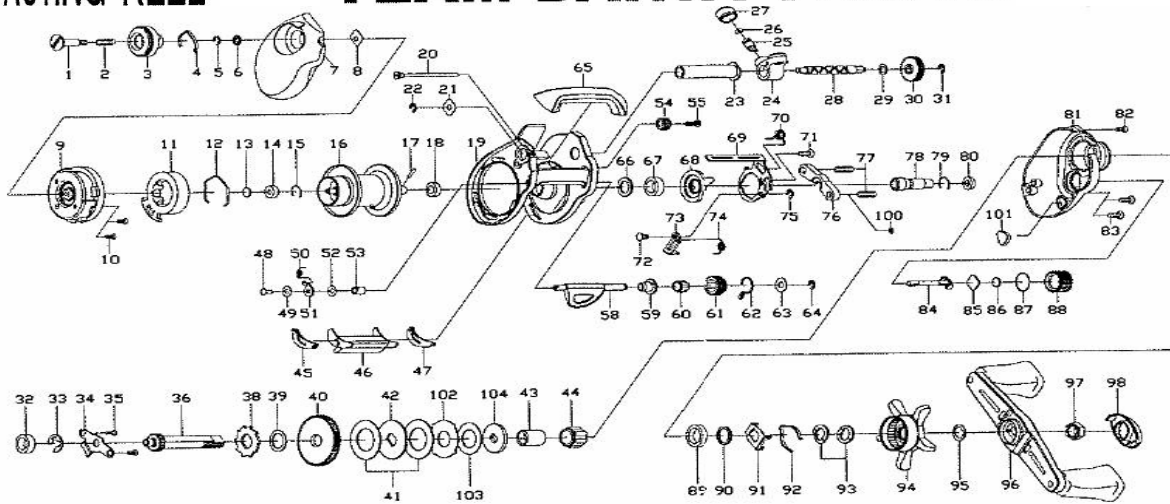




# BAITCASTING REEL

# TEAM DAIWA VIENTO

Please order by parts number, not key number  
 Bitte, Best.-Nr. angeben (Nicht "Key"-Nr.)  
 Veuillez indiquer le numero de la piece (Non "Key" No.)



Key No.	Parts No.	Parts Names	Key No.	Parts No.	Parts Names
1	E59-3803	Set plate screw	53	E60-2201	Bushing (A)
2	E59-3701	Set plate spring	54	E60-1501	Idle gear
3	E59-3604	Brake adjusting knob	55	351-1805	Screw (G)
4	E61-1601	Brake click spring	58	E60-2001	Lever
5	B33-9801	Brake dial retainer (A)	59	E60-1801	Bushing (B)
6	E59-3901	Brake dial washer	60-61	E61-0101	Gear assembly
7	E60-3402	Left side plate	62	E60-1601	Spring (B)
8	E59-4001	Brake dial retainer (B)	63	E60-1901	Washer ID
9	E60-3501	Set plate	64	320-1402	Retainer (A)
10	F10-0002	Screw (B)	65	E60-3001	Front plate
11	E59-4701	Magnet: holder	66	E58-8601	Washer (A)
12	E59-5001	Magnet holder ret. Ring	67	B86-1701	Ball bearing (C)
13	E59-4600	Spacer (A)	68	E59-9901	Clutch cam (A)
14	G49-8601	Ball bearing (A)	69	E60-6001	Clutch cam (B)
15	E21-9701	Bearing retainer (A)	70	E60-0401	Clutch cam spring (A)
16-18	E61-3301	Spool assembly	71	351-1805	Screw (H)
19	E59-9402	Frame assembly	72	E60-0301	Pin
20	E60-1101	Screw (E)	73	E60-0201	Clutch trip plate
21	E60-1401	Worm shaft washer (A)	74	E60-0501	Clutch cam spring (B)
22	320-5901	Worm shaft retainer (A)	75	320-5901	Retainer (B)
23	E58-9801	Level wind guard	76	E58-9501	Yoke
24	E60-0801	Line guide	77	E58-9701	Yoke spring
25	E59-0601	Line guide pawl	78	E61-2601	Pinion gear
26	F59-0700	Line guide washer	79	E21-9701	Bearing retainer (B)
27	E59-0802	Pawl cap	80	G46-6202	Ball bearing (D)
28	E60-1201	Worm shaft	81	E61-2801	Right side plate
29	E59-7301	Spacer (H)	82	E60-3901	Right side plate screw (A)
30	E60-1301	Worm shaft gear	83	E59-1601	Right side plate screw (B)
31	B33-9801	Worm shaft gear retainer	84	F80-0501	Pinion shaft
32	B35-8606	Ball bearing (B)	85	B17-5405	Spacer (E)
33	320-1402	Drive shaft retainer (B)	86	B17-5501	Spacer (F)
34	E60-0701	Drive shaft retainer (A)	87	171-5201	"O"ring
35	351-1805	Screw (C)	88	E59-1503	Cast control cap
36	E61-2501	Drive shaft	89	B86-1704	Ball bearing (E)
38	E60-4001	Anti-reverse ratchet	90	E61-4501	Spacing sleeve
39	E60-7501	Spacer (G)	91	G58-8601	Plate (B)
40	E61-2701	Drive gear	92	F03-2401	Leaf spring
41	G42-8501	Drag washer (A)	93	150-8901	Drag spring washer
42	E61-4301	Key washer (A)	94	F57-6506	Star drag
43	E61-4901	Gear shaft collar	95	E61-5001	Washer (A)
44	F99-9803	Roller clutch (A)	96	E61-3101	Handle assembly
45	E59-9601	Spacer (B)	97	E61-3601	Handle nut
46	E60-0101	Clutch lever	98	F57-7201	Handle nut plate
47	E59-9501	Spacer (D)	100	E61-4701	Washer (E)
48	E60-3701	Screw (F)	101	E61-4801	Clutch cam plate
49	E60-2501	Washer (B)	102	E61-4401	Eared washer
50	E60-7401	Spring (A)	103	G45-5801	Drag washer (B)
51	E60-2401	Plate (A)	104	E61-4201	Key washer (B)
52	E60-2301	Washer (C)			