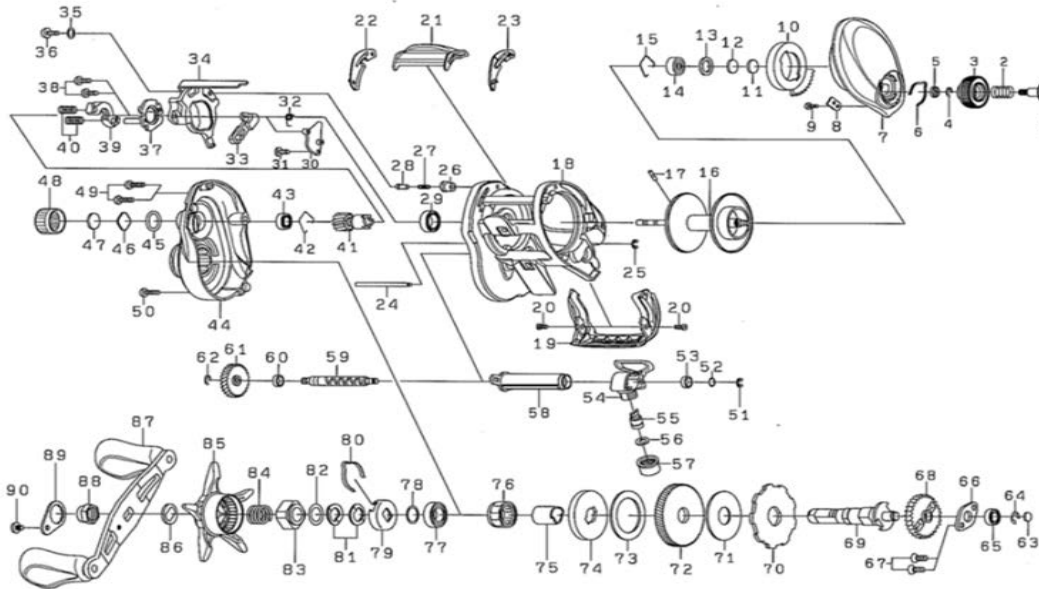


# BAITCASTING REEL

Please order by parts number, not key number  
Veuillez indiquer le numéro de la pièce (Non "Key" No.)

# TAT200HL/HSL



### Key No Part No Description

1	J71-6301	BRAKE DIAL SCREW
2	E16-7101	BRAKE DIAL SPRING
3	J21-3702	BRAKE DIAL
4	B33-9801	BRAKE DIAL RETAINER(A)
5	F63-7701	BRAKE DIAL COLLAR
6	H66-3401	BRAKE DIAL LEAF SPRING
7	H94-4932	RS PLATE
8	H91-5501	BRAKE DIAL RETAINER(B)
9	G93-9301	BRAKE DIAL RETAINER(B)SCREW
10	H93-0502	MAGNET HOLDER
11	375-7406	RS BALL BEARING WASHER(A)(0.1MM)
12	375-7411	RS BALL BEARING WASHER(B)
13	G18-5101	RS BALL BEARING WASHER(C)
14	G51-1503	RS BALL BEARING
15	F03-2201	RS BALL BEARING RING
16	J10-7205	SPOOL ASSEMBLY ( 16 - 17 )
17	J02-8001	SPOOL PIN
18	H94-3928	FRAME
19	J21-3603	FRONT COVER
20	H45-5407	FRONT COVER SCREW
21	H91-2401	CLUTCH LEVER
22	H91-5701	CLUTCH LEVER PLATE (R)
23	H91-5601	CLUTCH LEVER PLATE (L)
24	H91-2101	OSCILLATING POST
25	H70-4101	OSCILLATING POST RETAINER
26	H91-0601	CLUTCH CAM PLATE PIN SPRING COLLAR
27	H92-8801	CLUTCH CAM PLATE PIN SPRING
28	J05-5201	CLUTCH CAM PLATE PIN
29	B86-1704	CLUTCH CAM BALL BEARING
30	H94-4301	KICK LEVER PLATE(A)
31	H29-4101	KICK LEVER PLATE (A) SCREW
32	H47-3301	KICK LEVER PLATE SPRING
33	J22-1501	KICK LEVER
34	H94-4001	CLUTCH CAM PLATE
35	H15-9201	CLUTCH CAM PLATE SCREW WASHER
36	352-2501	CLUTCH CAM PLATE SCREW
37	H65-9101	KICK LEVER PLATE (B)
38	B03-2904	KICK LEVER PLATE (B) SCREW
39	H94-4401	CLUTCH PLATE
40	J05-5301	CLUTCH SPRING
41	J09-2001	PINION GEAR
42	E21-9701	PINION RING
43	G43-1102	PINION BALL BEARING
44	H94-3837	LS PLATE
45	171-5201	MECHANICAL BRAKE O-RING
46	B17-5406	MECHANICAL BRAKE WASHER (A)(t=0.5)
47	B17-5503	MECHANICAL BRAKE WASHER (B)

### Key No Part No Description

48	J00-4707	MECHANICAL BRAKE KNOB
49	G04-0820	LS PLATE SCREW (A)
50	G04-0829	LS PLATE SCREW (B)
51	320-5901	WORM SHAFT RETAINER(A)
52	B41-1702	WORM SHAFT WASHER(0.1MM)
53	G72-0001	WORM SHAFT COLLAR
54	J17-6601	LEVEL WIND
55	121-4212	PAWL
56	373-1303	PAWL WASHER(0.1MM)
57	F40-2801	PAWL HOLDER NUT
58	H94-4601	WORM SHIELD
60	H91-1701	WORM SHAFT COLLAR
61	H91-0501	WORM SHAFT GEAR
63	G09-9801	GEAR SHAFT WASHER(0.1MM)
64	320-8002	GEAR SHAFT RETAINER
65	B35-8608	GEAR SHAFT BALL BEARING
66	H92-8901	GEAR SHAFT PLATE
67	E13-4509	GEAR SHAFT PLATE SCREW
68	H91-2701	WORM GEAR
69	H91-1602	GEAR SHAFT
70	H92-9401	RATCHET
71	J08-5101	DRIVE GEAR WASHER
72	J07-7002	DRIVE GEAR
73	H45-2602	DRAG WASHER ( t=1.0 )
74	H91-3201	DRAG DISC WASHER
75	J37-7801	DRAG COLLAR
76	G81-9801	ONEWAY CLUTCH
78	B55-3801	HANDLE BEARING WASHER
79	F02-8203	DRAG HOLDER
80	F03-2401	DRAG HOLDER LEAF SPRING
81	150-8901	DRAG SPRING WASHER
82	H92-9501	STAR DRAG WASHER ( t=1.0 )
83	H91-2002	DRAG NUT
84	J01-1901	DRAG NUT SPRING
85	H91-1901	STAR DRAG
86	F57-6601	HANDLE COLLAR
87	J09-1201	HANDLE ASSEMBLY
88	H72-3702	HANDLE NUT
89	J21-3502	HANDLE LOCK PLATE
90	G04-0803	HANDLE LOCK PLATE SCREW

### TAT200HSL Special Parts

Key No	Part No	Description
41	J09-2101	PINION GEAR
44	H94-3838	LS PLATE
72	J07-6602	DRIVE GEAR