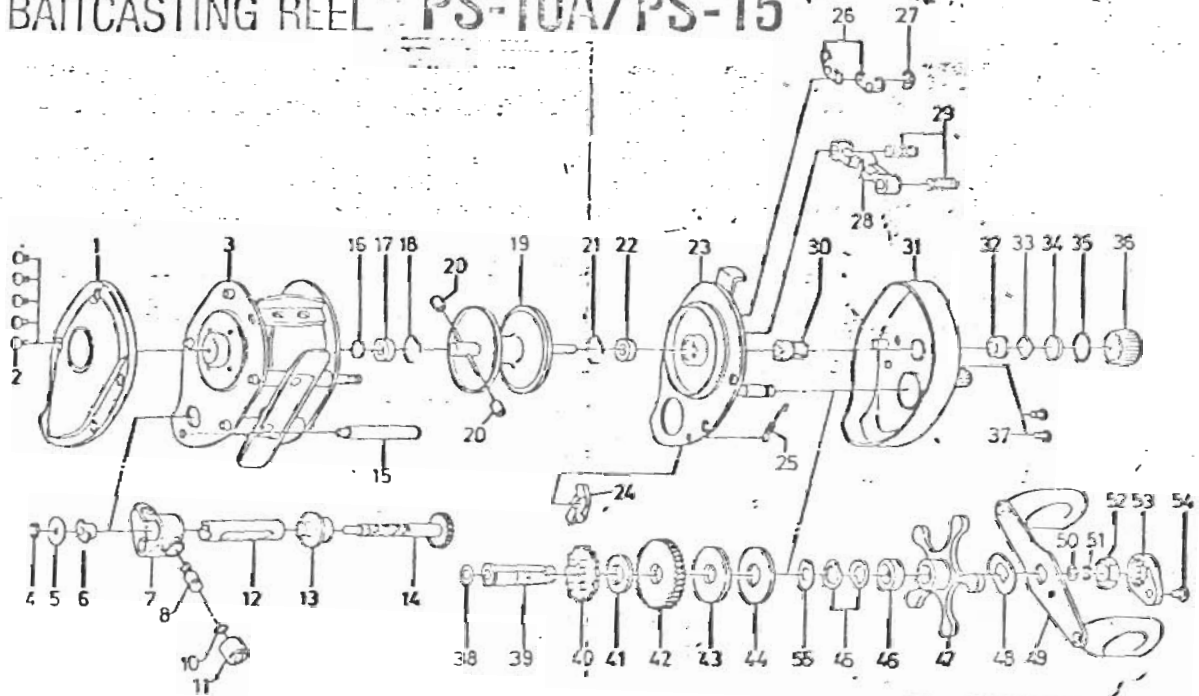


Daiwa
COMMITTED TO TOTAL QUALITY

PS10 → 4.7-1 gear ratio
PS10A → 5.1-1 gear ratio
diff. gearing

BAITCASTING REEL PS-10A/PS-15



Key No.	Parts No.	Parts Name
1	6-B36-1304	Left side cover
2	6-B36-0401	Left side cover screw
3	6-B65-8601	Frame
4	6-320-5901	Worm shaft retainer
5	6-376-1801	Worm shaft holder washer
6	6-022-2201	Worm shaft holder
7	6-B57-8701	Line guide
8	6-B71-0101	Line guide pin
10	6-375-4100	Line guide washer
11	6-342-4801	Line guide nut
12	6-B36-2601	Worm shield
13	6-B36-1201	Shield bush
14	6-B36-3101	Worm shaft
15	6-B36-3401	Frame post
16	6-375-7400	Bearing washer
17	6-B55-0301	Bearing
18	6-B42-1601	Bearing retainer
19	6-B36-3504	Spool
20	6-B35-2901	Brake collar
21	6-B42-1601	Bearing retainer
22	6-B55-0301	Bearing
23	6-B57-7901	Set plate
24	6-B68-2801	Anti-reverse claw
25	6-B35-8901	Anti-reverse claw spring
26	6-B36-9101	Set plate spring
27	6-320-1402	Clutch ret. ring
28	6-B35-9001	Pinion yoke
29	6-144-7101	Pinion yoke spring
30	6-B36-2901	Pinion gear
31	6-B51-0719	Right side cover
32	6-B64-3101	Bush

Key No.	Parts No.	Parts Name
33	6-B17-5401	Bearing ret. washer
34	6-B17-5501	Bearing washer
35	6-171-5201	"O" ring
36	6-B35-7304	Right spool cap
37	6-B36-0401	Right side cover screw
38	6-373-7611	Gear shaft washer A
39	6-B35-9602	Gear shaft
40	6-B35-9701	Ratchet
41	6-375-7102	Gear shaft washer B
42	6-B36-0101	Drive gear
43	6-B36-0202	Drag washer A
44	6-B36-0301	Drag washer B
45	6-150-8901	Spring washer
46	6-634-5801	Spacing sleeve
47	6-B57-8201	Star drag
48	6-150-9001	Handle washer
49	6-B46-5801	Handle
50	6-B41-1701	Handle nut washer
51	6-320-8202	Handle nut retainer
52	6-B43-3601	Handle nut
53	6-B43-3901	Handle nut plate
54	6-351-1801	Handle nut plate screw
55	6-373-7803	Handle adjusting washer

PS-15 special parts

3	6-B65-8901	Frame
12	6-B36-4101	Worm shield
14	6-B36-3102	Worm shaft
15	6-B36-4401	Frame post
19	6-B36-4504	Spool
31	6-B51-0720	Right side cover

PS10A only
BBS-210!

BB7-0901
PS10A only