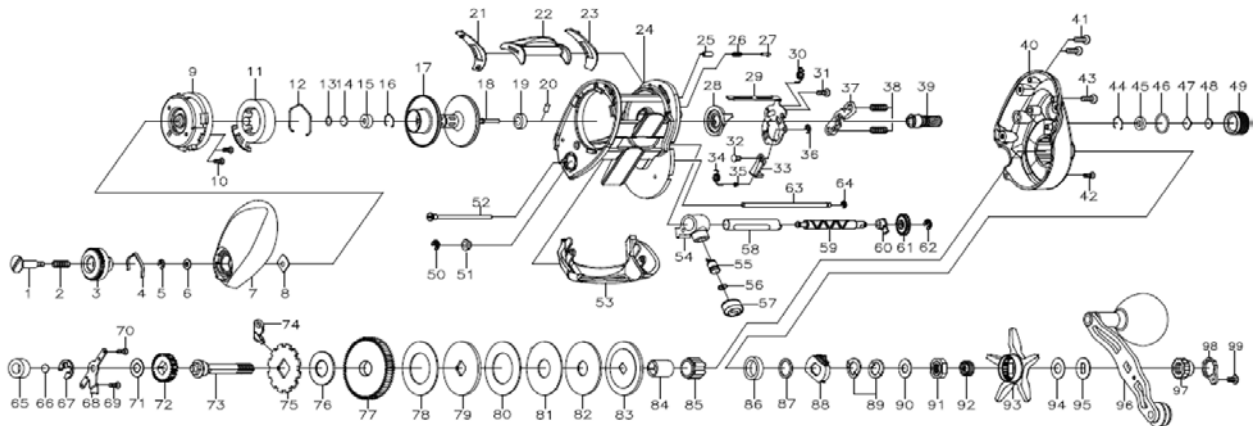


**LX-HD 400HS-P / XS-P / H-P / PWR-P**



Key No	Part No	Description
1	460-5620	Set plate screw
2	510-4450	Set plate spring
3	550-1700	Brake adjusting knob
4	510-5341	Brake click spring
5	200-0530	Brake dial retainer(A)
6	540-5380	Washer
7	23A-2560	Left side plate
8	410-2720	Brake dial retainer(B)
9	230-2570	Set plate
10	460-3220	Screw
11	240-2290	Magnet holder
12	430-1070	Magnet holder ret. Ring
13	540-8120	Washer
14	540-8110	Spacer(A)
15	140-3310	Ball bearing
16	430-0440	Bearing retainer
17-20	702-1770	Spool assembly
21	410-2680	Spacer (B)
22	090-0290	Clutch lever
23	410-2670	Spacer (C)
24	702-1750	Frame
25	400-2570	Pin
26	510-5310	Spring
27	400-2720	Pin
28	170-1370	Clutch cam
29	410-2690	Plate
30	510-5300	Spring
31	460-1290	Screw
32	400-3310	Kick lever pin
33	330-2941	Kick lever
34	510-5290	Kick lever spring
35	210-2410	bushing
36	200-0570	E-Clip
37	410-2711	Yoke
38	510-6040	Yoke spring
39	260-2202	Pinion gear
40	702-1800	Right side plate
41	460-5790	Screw
42	460-4870	Screw
43	460-7430	Screw
44	430-1061	Bearing retainer
45	150-2060	Bushing
46	430-1000	O-Ring
47	540-6460	Spacer
48	540-5980	Spacer
49	38A-1990	Cast control cap
50	200-0580	Worm shaft retainer
51	150-2260	Bushing
52	460-5320	Long screw
53	55A-1710	Frame plate
54	490-1102	Line guide
55	400-2540	Line guide pawl
56	540-3980	Washer
57	380-0780	Line pawl cap
58	270-0870	Level wind guard
59	470-2430	Worm shaft
60	150-1050	Bushing

Key No	Part No	Description
61	240-2300	Worm shaft gear
62	200-0530	Gear retainer
63	40A-3380	Pillar
64	200-1160	E-Clip
65	140-2180	Ball bearing
66	540-7250	Washer
67	200-0580	Drive gear shaft retainer
68	410-2700	Plate
69	460-5290	Screw
70	460-5370	Screw
71	540-6600	Washer
72	240-2260	Oscillation gear
73	470-2490	Drive shaft
74	530-0860	Anti-reverse pawl
75	240-3030	Anti-reverse ratchet
76	540-6670	Spacer (F)
77	250-1700	Drive gear
78	540-7100	Washer
79	540-8060	Key washer
80	540-9890	Drag washer
81	540-8100	Key washer
82	540-8090	Drag washer
83	540-8070	Top washer
84	150-2270	Gear shaft collar
85	140-2000	Roller clutch
86	140-2130	Ball bearing
87	540-6250	Spacing washer
88	510-5370	Plate
89	540-6391	Drag spring washer
90	540-9021	Washer
91	380-3210	NUT
92	510-6130	Spring
93	32A-1330	Star drag
94	540-9301	Washer
95	540-9271	Washer
96	702-1780	handle assembly
97	380-1441	Handle nut
98	41A-2500	Handle nut plate
99	460-4260	Screw

**LX HD 400XS-P Special Parts**

Key No	Part No	Description
39	260-2232	PINION GEAR
40	702-1810	RIGHT SIDE PLATE
77	250-1720	DRIVE GEAR

**LX HD 400PWR-P Special Parts**

Key No	Part No	Description
39	260-2232	PINION GEAR
40	702-1810	RIGHT SIDE PLATE
77	250-1720	DRIVE GEAR

**LX HD 400H-P Special Parts**

Key No	Part No	Description
39	260-2232	PINION GEAR
40	702-1810	RIGHT SIDE PLATE
77	250-1720	DRIVE GEAR