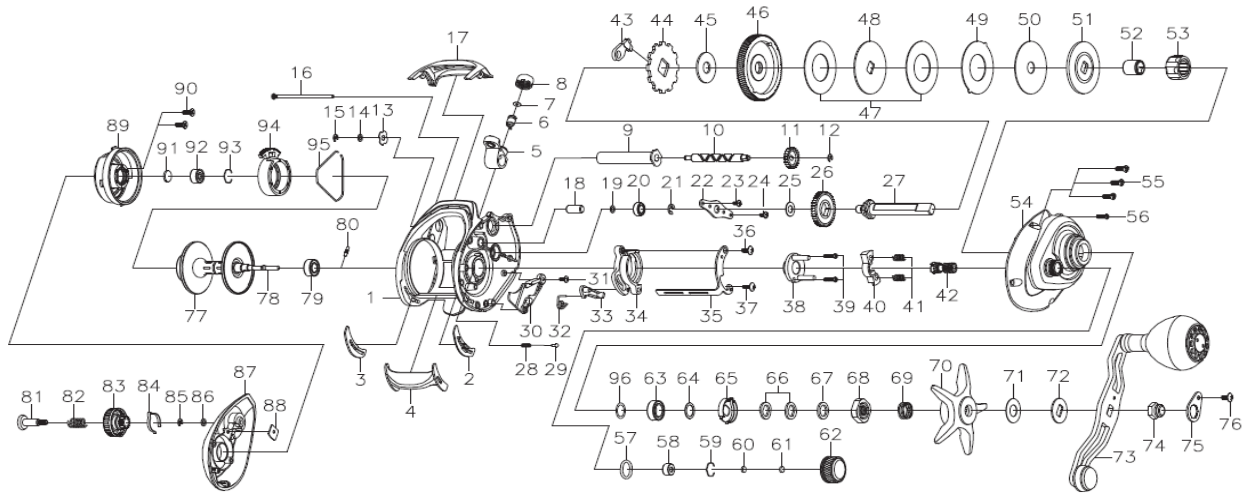


LX - HD 300HS-P / XS-P / H-P



Key No Part No Description

1	702-1850	Frame
2	410-4450	Spacer (A)
3	410-4460	Spacer (B)
4	090-0340	Clutch lever
5	702-2520	Line guide
6	400-2540	Line guide pawl
7	540-3980	Washer
8	380-0780	Line pawl cap
9	270-0810	Level wind guard
10	470-1960	Worm shaft
11	240-2210	Worm shaft gear
12	200-0530	Gear retainer
13	540-6060	Worm shaft washer
14	540-3930	Washer
15	200-0530	Worm shaft retainer
16	460-4980	Long screw
17	550-1960	Frame plate
18	400-2570	Pin
19	540-7250	Washer
20	140-2180	Ball bearing
21	200-0580	Drive gear shaft retainer
22	410-4490	Plate
23	460-5370	Screw
24	460-5290	Screw
25	540-4140	Washer
26	240-2200	Oscillation gear
27	470-2510	Drive shaft
28	510-5310	Spring
29	400-2720	Pin
30	410-4470	Plate
31	460-5370	Screw
32	510-6610	Kick lever spring
33	330-3180	Kick lever
34	170-1510	Clutch cam
35	410-4480	Plate
36	460-1830	Screw
37	460-8180	Screw
38	410-4520	Plate
39	460-7940	Screw
40	080-0070	Yoke
41	510-6620	Yoke spring
42	260-2710	Pinion gear
43	530-0860	Anti-reverse pawl
44	240-4040	Anti-reverse ratchet
45	540-9830	Spacer (C)
46	250-2190	Drive gear
47	540-6890	Drag washer
48	540-8010	Key washer
49	540-8030	Washer
50	540-8080	Washer
51	540-8020	Top washer
52	150-2190	Gear shaft collar
53	1401810	Roller clutch
54	702-1900	Right side plate

Key No Part No Description

55	460-0450	Screw
56	460-1131	Screw
57	430-1110	O-ring
58	150-3240	Bushing
59	430-1061	Bearing retainer
60	540-6850	Spacer (D)
61	540-4340	Spacer (E)
62	380-3470	Cast control cap
63	140-2130	Ball bearing
64	540-6340	Spacing washer
65	510-5370	Plate
66	540-6391	Drag spring washer
67	540-9021	Washer
68	380-3210	Nut
69	510-6130	Spring
70	32A-1330	Star drag
71	540-9301	Washer
72	540-9271	Washer
73	702-1870	Handle assembly
74	380-1810	Handle nut
75	35A-0310	Handle nut plate
76	460-5390	Screw
77	702-1880	Spool assembly
78	360-2321	Main shaft
79	140-2630	Ball bearing
80	400-2250	pin
81	460-5571	Set plate screw
82	510-4450	Set plate spring
83	550-1980	Brake adjusting knob
84	510-5180	Brake click spring
85	200-0530	Brake dial retainer(A)
86	540-5380	Washer
87	702-1890	Left side plate
88	410-1911	Brake dial retainer(B)
89	220-3210	Set plate
90	460-5460	Screw
91	540-7190	Washer
92	140-3310	Ball bearing
93	430-0440	Bearing retainer
94	240-1952	Magnet holder
95	430-0970	Magnet holder ret, ring

LX HD 300XS-P Special Parts

Key No	Part No	Description
42	260-2720	Pinion gear
46	250-2200	Drive gear
54	702-1910	Right side plate

LX HD 300H-P Special Parts

Key No	Part No	Description
42	260-2700	Pinion gear
46	250-2180	Drive gear
54	702-1860	Right side plate