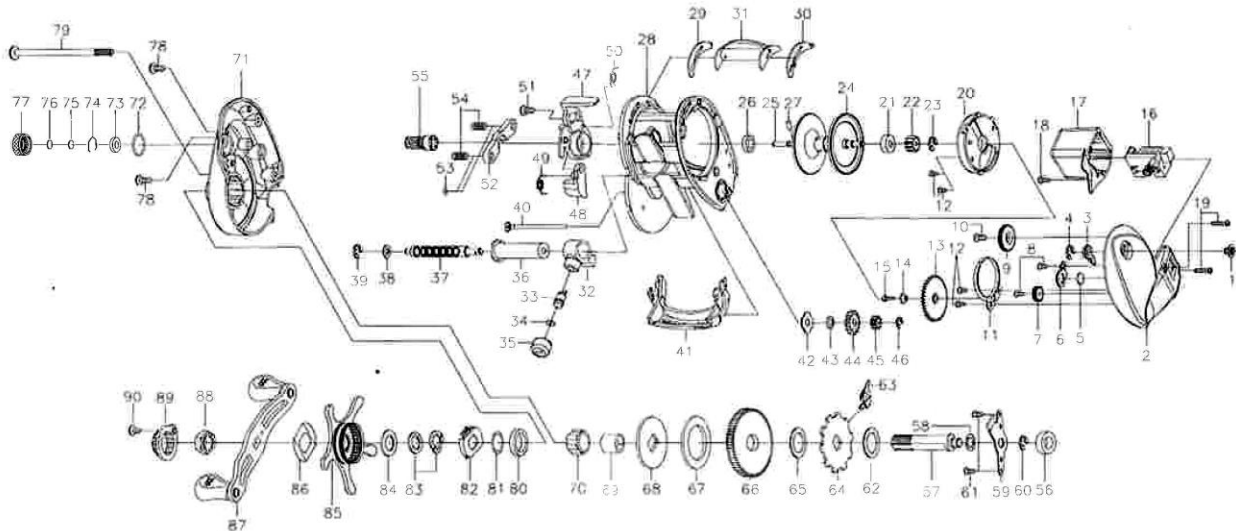




# BAITCASTING REEL

Please order by parts number, not key number  
 Veuillez indiquer le numéro de la pièce (Non "Key" No.)

## LEXA-LC100HL



Key No.	Part No.	Part Name	Key No.	Part No.	Part Name
1	330-3060	CLICK BUTTON	48	330-2830	KICK LEVER
2	701-2530	RIGHT SIDE PLATE	49	510-5081	SPRING
3	190-1271	CLICK PAWL	50	510-6320	SPRING
4	200-0530	RETAINER	51	460-1290	SCREW
5	540-5990	SPACER	52	410-2890	YOKE
6	410-3380	PLATE	53	540-6020	WASHER
7	260-2400	GEAR	54	510-4430	YOKE SPRING
8	460-2930	SCREW	55	260-1693	PINON GEAR
9	240-2820	COUNTER GEAR	56	140-1280	BALL BEARING
10	460-7510	SCREW	57	470-3091	DRIVE SHAFT
11	510-6340	CLICK SPRING	58	540-6600	WASHER
12	460-7470	SET PLATE SCREW	59	410-2211	DRIVE SHAFT PLATE
13	240-3250	COG WHEEL	60	200-0580	RETAINER
14	210-2580	COLLAR	61	460-4640	SCREW
15	460-7460	SCREW	62	540-7010	WASHER
16	550-6100	COUNTER ASSEMBLY	63	530-0840	A/R PAWL
17	701-2470	COUNTER COVER	64	240-2530	A/R RATCHET
18	460-1980	SCREW	65	540-6840	WASHER
19	460-6030	SCREW	66	250-1430	DRIVE GEAR
20	220-3170	SET PLATE	67	540-6950	DRAG WASHER
21	140-2340	BALL BEARING	68	540-9031	KEY WASHER
22	240-3090	SPOOL GEAR	69	150-2190	GEAR SHAFT COLLAR
23	200-0530	RETAINER	70	140-1810	ROLLER CLUTCH
24-27	701-2510	SPOOL ASSEMBLY	71	701-2720	LEFT SIDE PLATE
28	110-1084	FRAME	72	430-1080	O'RING
29	410-2150	CLUTCH LEVER PLATE	73	150-2060	BUSHING
30	410-2140	CLUTCH LEVER PLATE	74	430-1061	BEARING RETAINER
31	090-0260	CLUTCH LEVER	75	540-6850	SPACER
32	490-1080	LINE GUIDE	76	540-4340	SPACER
33	400-2540	LINE GUIDE PAWL	77	380-2020	CAST CONTROL CAP
34	540-3980	WASHER	78	460-4300	SCREW
35	380-0780	LINE GUIDE NUT	79	460-7480	LONG SCREW
36	270-0720	LEVEL WIND GUARD	80	140-0570	BALL BEARING
37	470-4590	WORM SHAFT	81	540-6250	WASHER
38	540-3930	WASHER	82	510-5370	CLICK LEAF SPRING HOLDER
39	200-0530	RETAINER	83	540-6391	WASHER
40	460-5170	LONG SCREW	84	540-9021	WASHER
41	550-4104	FRONT PLATE	85	701-2540	STAR DRAG
42	540-6060	WORM SHAFT WASHER	86	510-3260	LEAF SPRING
43	210-2620	COLLAR	87	701-2520	HANDLE ASSEMBLY
44	240-3200	WOMR SHAFT GEAR	88	380-0880	HANDLE NUT
45	240-3270	WORM SHAFT GEAR	89	180-2470	HANDLE NUT PLATE
46	200-1440	RETAINER	90	460-0450	HANDLE NUT PLATE SCREW
47	170-1330	CLUTCH CAM			