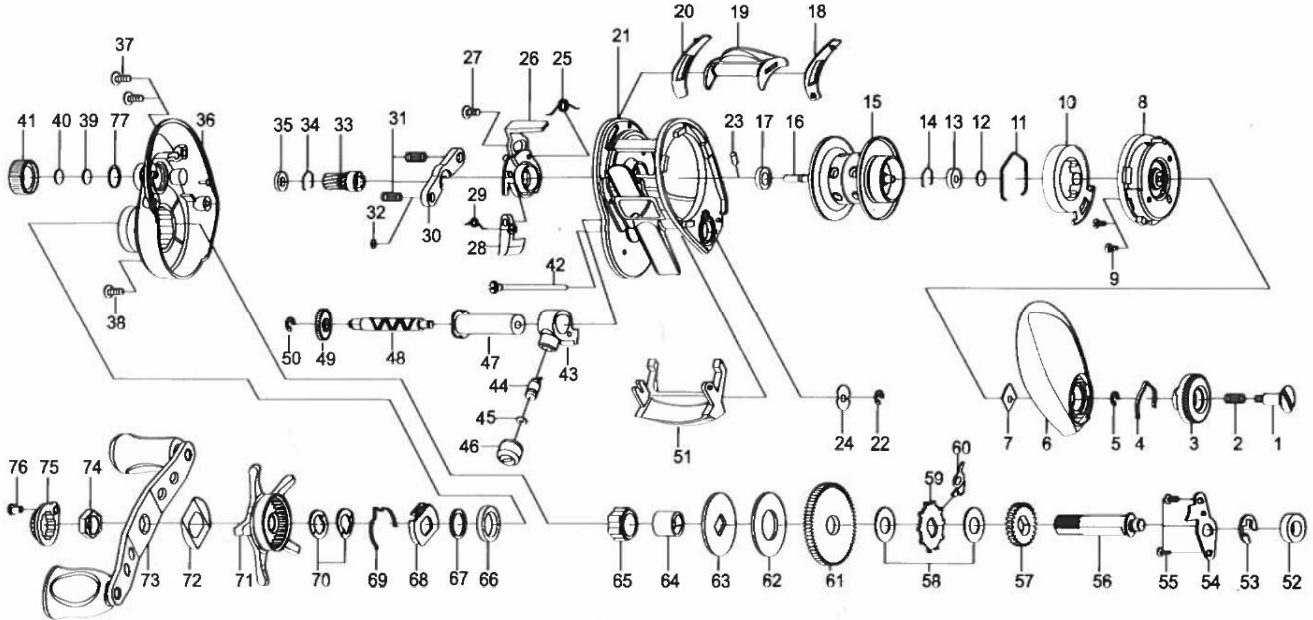


Please order by parts number, not key number
 Veuillez indiquer le numéro de la pièce (Non "Key" No.)



BAITCASTING REEL

LAGUNA 100 HL



Key No.	Parts No.	Parts Name	Key No.	Parts No.	Parts Name
1	460-5420	Set plate screw (S)	41	380-1660	Cast control rap (S)
2	510-4450	Set plate spring	42	400-2531	Long screw
3	550-1610	Brake adjusting knob	43	490-1080	Line guide
4	510-5060	Brake click spring	44	400-2540	Line guide pawl
5	200-0530	Brake dial retainer (A)	45	540-3980	Washer (C)
6	230-2270	Left side plate	46	380-0780	Nut
7	410-1911	Brake dial retainer (B)	47	270-0720	Level wind guard
8	220-3000	Left set plt	48	470-1920	Worm shaft
9	460-3220	Left set plate screw	49	240-2180	Worm shaft gear
10	240-1952	Magnet holder	50	200-0530	Gear retainer
11	430-1070	Magnet holder ret	51	550-1620	Front plate
12	540-5990	Spacer (A)	52	140-1280	Ball Bearing (C)
13	140-1400	Ball bearing (A)	53	200-0580	Drive gear shaft retainer (B)
14	430-1061	Bearing retainer	54	410-2210	Drive gear shaft retainer (A)
15-17,23	700-9160	Spool assembly	55	460-4600	Drive shaft retainer screw
18	410-2150	Spacer (B)	56	460-3850	Drive shaft
19	090-0260	Clutch lever (S)	57	240-2190	Drive gear A
20	410-2140	Spacer (C)	58	540-6840	Spacer (F)
21	110-0950	Frame assembly	59	240-2530	Anti-reverse ratchet
22	200-0530	Worm shaft retainer	60	530-0840	Anti-reverse pawl
23	400-2250	Spool Pin	61	250-1311	Drive gear
24	540-6060	Worm shaft washer	62	540-6870	Drag washer
25	510-5070	Clutch cam spring (A)	63	540-6910	Key washer
26	170-1330	Clutch cam	64	150-2180	Gear shaft collar
27	460-5440	Clutch cam screw	65	140-1810	Roller clutch
28	330-2830	Cluck trip plate	66	140-1830	Ball Bearing (D)
29	510-5080	Clutch cam spring (B)	67	540-1480	Spacing washer
30	410-1920	Yoke	68	410-2220	Click leaf spring holder
31	510-4430	Yoke spring	69	510-4760	Leaf spring (A)
32	540-6020	Washer (B)	70	540-6390	Drag spring washer
33	260-1690	Pinion gear	71	320-1160	Star drag
34	430-1061	Bearing retainer	72	510-3260	Leaf spring (B)
35	140-1820	Ball bearing (B)	73	700-8390	Handle assembly (S)
36	230-2280	Right side plate	74	386-0880	Handle nut
37	460-1570	R/S plt screw	75	180-2470	Handle nut plate (S)
38	460-5450	R/S plt screw A	76	460-0450	Handle nut plate screw
39	540-6850	Spacer (D)	77	430-1080	O-Ring
40	540-4340	Spacer (E)			