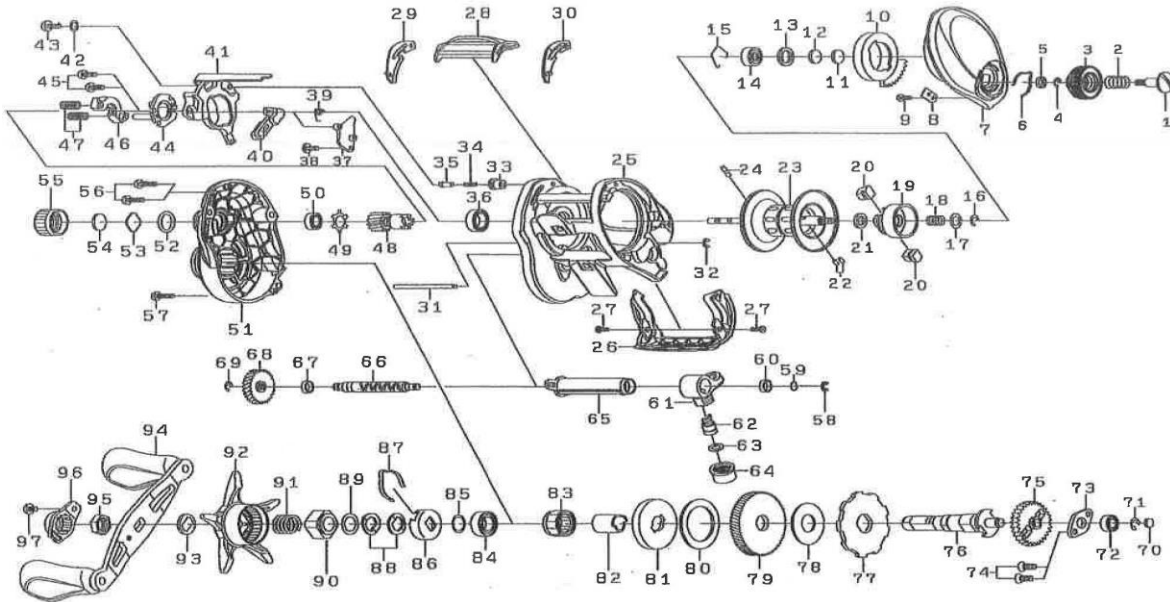




# BAITCASTING REEL

# FUEGO CT 100HL/100HSL-100XSL

Please order by parts number, not key number  
 Veuillez indiquer le numéro de la pièce (Non "Key" No.)



| Key No. | Part No. | Part Name                 |
|---------|----------|---------------------------|
| 1       | H93-0401 | BRAKE DIAL SCREW          |
| 2       | E16-7101 | BRAKE DIAL SPRING         |
| 3       | J21-3704 | BRAKE DIAL                |
| 4       | B33-9801 | RETAINER                  |
| 5       | F63-7701 | BRAKE DIAL WASHER         |
| 6       | H66-3401 | BRAKE DIAL SPRING         |
| 7       | H94-4930 | RIGHT SIDE PLATE          |
| 8       | H91-5501 | BRAKE DIAL RETAINER       |
| 9       | G93-9301 | FRONT PLT SCREW           |
| 10      | H93-0502 | MAGNET HOLDER             |
| 11      | 375-7406 | SPACER                    |
| 12      | 375-7411 | SPACER B                  |
| 13      | G18-5101 | SPACER C                  |
| 14      | G51-1503 | BALL BEARING              |
| 15      | F03-2201 | BEARING RETAINER          |
| 16-24   | Z02-2784 | SPOOL ASSEMBLY            |
| 25      | J33-8012 | FRAME                     |
| 26      | J24-4013 | FRONT PLATE               |
| 27      | H84-2803 | SCREW                     |
| 28      | J33-5001 | CLUTCH LEVER              |
| 29      | H91-5701 | CLUTCH LEVER PLT          |
| 30      | H91-5601 | CLUTCH LEVER PLT          |
| 31      | J43-7001 | STABILIZER BAR\           |
| 32      | H70-4101 | RETAINER                  |
| 33      | H91-0601 | COLLAR                    |
| 34      | H92-8801 | SPRING                    |
| 35      | J05-5201 | PIN                       |
| 36      | B86-1704 | BALL BEARING              |
| 37      | J24-7401 | PLATE (A)                 |
| 38      | H29-4101 | SCREW                     |
| 39      | J24-7501 | CLUTCH CAM SPRING         |
| 40      | J22-1501 | CLUTCH TRIP LEVER         |
| 41      | J24-7201 | CLUTCH CAM PLATE          |
| 42      | H15-9201 | WASHER                    |
| 43      | 352-2501 | SCREW                     |
| 44      | H65-9101 | CLUTCH CAM PLATE          |
| 45      | B03-2904 | SCREW                     |
| 46      | H94-4401 | PINION YOKE               |
| 47      | H58-2001 | PINION YOKE SPRING        |
| 48      | H94-4701 | PINION GEAR               |
| 49      | H18-0501 | PINION BALL BEARING RET   |
| 50      | G43-1102 | BALL BEARING              |
| 51      | J21-4450 | LEFT SIDE PLATE           |
| 52      | B05-5201 | SPOOL ADJ. CAP O'RING     |
| 53      | J21-3101 | SPOOL ADJ. CAP WASHER (A) |
| 54      | B17-5503 | SPOOL ADJ. CAP WASHER (B) |
| 55      | H21-3601 | SPOOL ADJ. CAP            |
| 56      | G04-0820 | SCREW                     |
| 57      | G04-0828 | SCREW                     |
| 58      | 320-5901 | RETAINER                  |

| Key No. | Part No. | Part Name                |
|---------|----------|--------------------------|
| 59      | B41-1703 | WASHER                   |
| 60      | G72-0001 | WORM SHAFT BEARING       |
| 61      | J47-2101 | LEVEL WIND               |
| 62      | 121-4212 | OSC PAWL                 |
| 63      | 373-1303 | OSC PAWL WASHER          |
| 64      | F40-2801 | OSC PAWL HOLDER NUT      |
| 65      | J43-2801 | WORM SHAFT GUARD         |
| 66      | J24-3602 | WORM SHAFT               |
| 67      | G72-0001 | WORM SHAFT BEARING       |
| 68      | H91-0501 | WORM GEAR                |
| 69      | B33-9801 | RETAINER                 |
| 70      | G09-9801 | DRIVE SHAFT WASHER       |
| 71      | 320-8002 | DRIVE SHAFT RETAINER     |
| 72      | B35-8607 | DRIVE SHAFT BALL BEARING |
| 73      | H92-8901 | DRIVE SHAFT PLATE        |
| 74      | E13-4509 | SCREW                    |
| 75      | H91-2701 | DRIVE SHAFT GEAR         |
| 76      | H91-1602 | DRIVE SHAFT              |
| 77      | H92-9401 | A/R RATCHET              |
| 78      | J08-5101 | WASHER                   |
| 79      | H94-4802 | DRIVE GEAR               |
| 80      | H45-2602 | DRAG WASHER              |
| 81      | H91-3201 | KEY WASHER               |
| 82      | J37-7801 | DRIVE SHAFT COLLAR       |
| 83      | G81-9801 | ROLLER CLUTCH            |
| 84      | B86-1704 | BALL BEARING             |
| 85      | B55-3801 | BALL BEARING WASHER      |
| 86      | F02-8203 | CLICK LEAF SPRING HOLDER |
| 87      | F03-2401 | CLIKC LEAF SPRING        |
| 88      | 150-8901 | SPRING WASHER            |
| 89      | H92-9501 | WASHER                   |
| 90      | H91-2002 | NUT                      |
| 91      | J01-1901 | SPRING                   |
| 92      | H91-1901 | STAR DRAG                |
| 93      | F57-6601 | HANDLE COLLAR            |
| 94      | J47-2201 | HANDLE ASSEMBLY          |
| 95      | H72-3702 | HANDLE NUT               |
| 96      | J21-3502 | HANDLE NUT PLATE         |
| 97      | G04-0803 | HANDLE NUT PLATE SCREW   |

| FGCT100HSL SPECIAL PARTS |          |                 |
|--------------------------|----------|-----------------|
| Key No.                  | Part No. | Part Name       |
| 48                       | J00-4301 | PINION GEAR     |
| 51                       | J21-4451 | LEFT SIDE PLATE |
| 79                       | J00-4102 | DRIVE GEAR      |

| FGCT100XSL SPECIAL PARTS |          |                 |
|--------------------------|----------|-----------------|
| Key No.                  | Part No. | Part Name       |
| 48                       | J01-1301 | PINION GEAR     |
| 51                       | J21-4452 | LEFT SIDE PLATE |
| 79                       | J01-1402 | DRIVE GEAR      |