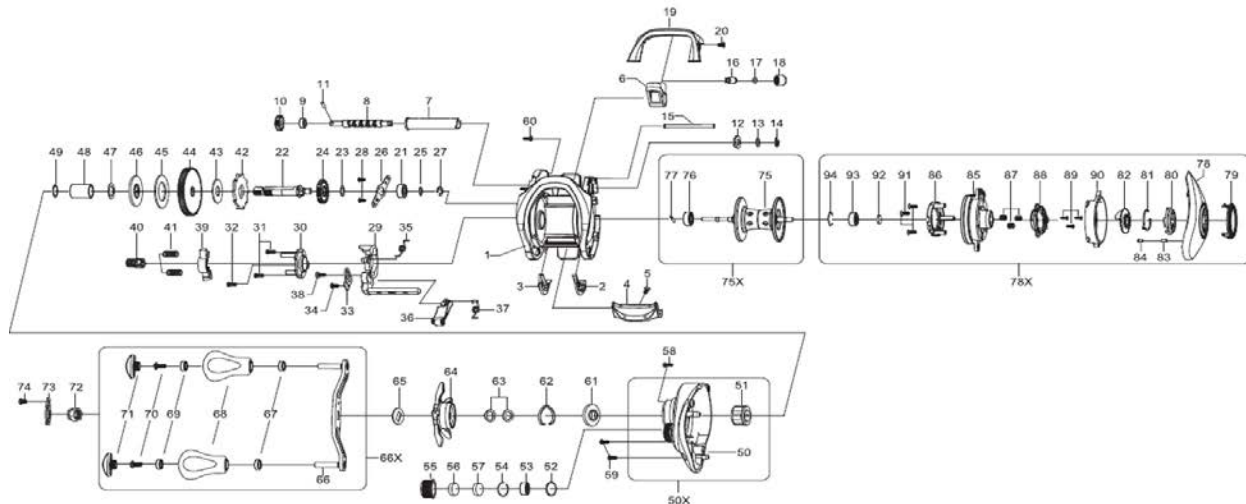




Baitcasting Reel

CA80HL/CA80HSL/CA80XSL

Please order by parts number, not key number.
Veuillez indiquer le numéro de la pièce (Non "Key" No.)



Key No Part No Description

1	457-7010	FRAME
2	420-2020	SPACER(A)
3	420-3020	SPACER(B)
4	420-4010	CLUTCH LEVER
5	150-7030	SCREW(A)
6	352-2010	T LEVEL WIND
7	140-6010	T LEVEL WIND GUARD
8	001-7013	WORM SHAFT(A)
9	295-4010	BALL BEARING(SPACER)
10	001-9010	WORM SHAFT(B)
11	002-0010	PIN(A)
12	243-8010	SPACER(C)
13	053-9020	WORM SHAFT WASHER
14	004-7010	WORM SHAFT RETAINER
15	271-1010	STABILIZER BAR
16	046-4011	LINE GUIDE PAWL
17	002-5020	LINE GUIDE WASHER
18	028-8021	PAWL CAP
19	423-1020	FRONT PLATE
20	015-2010	SCREW(B)
21	295-2010	BALL BEARING(A)
22	437-6010	DRIVE SHAFT
23	064-6010	WASHER(A)
24	193-8020	WORM GEAR
25	064-6020	WASHER(B)
26	440-9010	PLATE
27	004-7010	RETAINER(A)
28	002-8070	SCREW(C)
29	293-9010	CLUTCH CAM PLATE(A)
30	294-0010	CAM PLATE_R
31	117-7050	SCREW(D)
32	003-5050	SCREW(E)
33	289-4010	CLUTCH CAM PLATE(B)
34	301-4010	SCREW(F)
35	269-0010	CLUTCH CAM SPRING
36	230-8011	CLUTCH TRIP LEVER
37	414-6010	CLUTCH CAM SPRING
38	301-3020	SCREW(G)
39	208-3010	YOKE
40	295-7010	PINION GEAR (6.8:1)
41	246-5010	YOKE SPRINGS
42	140-7010	CLUTCH WHEEL
43	377-2010	DRIVE GEAR WASHER
44	296-1010	DRIVE GEAR (6.8:1)
45	153-1010	DRAG WASHER
46	136-7010	KEY WASHER
47	014-4050	WASHER(C)
48	453-7010	GEAR SHAFT COLLAR
49	008-6030	WASHER(D)
50	423-3060	RIGHT SIDE PLATE(A)
51	444-7010	ROLLER CLUTCH
52	007-1020	O-RING
53	297-1010	BALL BEARING(B)

Key No Part No Description

54	158-8011	RETAINER(B)
55	429-8040	CAST CONTROL CAP
56	083-4010	SPACER(D)
57	069-0010	SPACER(E)
58	003-5010	SCREW(H)
59	020-2020	SCREW(I)
60	003-5020	SCREW(J)
61	018-8010	CLICK LEAF SPRING HOLDER
62	200-2010	CLICK LEAF SPRING
63	008-8010	DRAG SPRING WASHER
64	420-9040	STAR DRAG (6.8:1)
65	093-3010	HANDLE COLLAR
66	421-1011	HANDLE ASSEMBLY(A)
67	295-0010	BALL BEARING(C)
68	421-3010	HANDLE KNOB
69	295-0010	BALL BEARING(D)
70	018-0010	HANDLE SCREW
71	421-4020	CAP
72	429-7011	HANDLE NUT
73	421-5040	HANDLE LOCK PLATE
74	120-2020	SCREW(K)
75	460-8010	SPOOL ASSEMBLY
76	297-0010	BALL BEARING(E)
77	012-0010	PIN(B)
78	423-7040	LEFT SIDE PLATE(A)
79	422-1020	COVER(A)
80	422-4020	BRAKE DIAL
81	200-2010	BRAKE CLICK SPRING
82	358-4010	CAM(A)
83	457-9010	WASHER(E)
84	457-8010	PIN(C)
85	457-6010	COVER(B)
86	429-9010	MAGNET HOLDER ASSEMBLY
87	266-5010	SPRING(A)
88	358-3010	CAM(B)
89	052-6020	SCREW(L)
90	423-8010	LEVER
91	014-1010	SCREW(M)
92	185-0010	SPACER(F)
93	297-1010	BALL BEARING(F)
94	297-6010	BEARING RETAINER

CA80HSL SPECIAL PARTS

Key No	Part No	Description
40	295-8010	PINION GEAR (7.5:1)
44	296-2010	DRIVE GEAR (7.5:1)
64	420-9030	STAR DRAG (7.5:1)

CA80XSL SPECIAL PARTS

Key N	Part No	Description
40	295-9010	PINION GEAR (8.3:1)
44	460-2010	DRIVE GEAR (8.3:1)
64	420-9070	STAR DRAG (8.3:1)