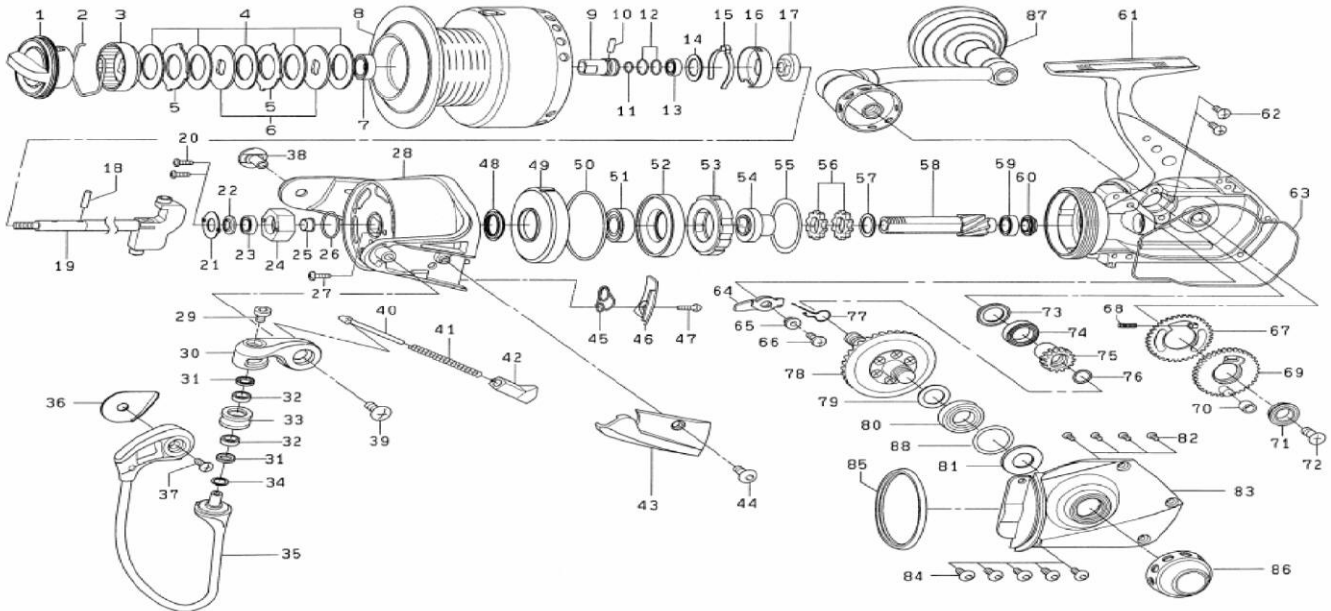


Please order by parts number, not key number  
Veuillez indiquer le numéro de la pièce (Non "Key" No.)



# SA-Z6500HDF



Key No.	Parts No.	Description
1	G34-0603	DRAG KNOB
2	F71-0001	DRAG WASHER RET
3	G16-5601	DRAG KNOB CLICK PLT
4	G16-5801	DRAG WASHER
5	G16-5901	EARED WASHER
6	G16-2701	KEY WASHER
7	G15-6801	BALL BEARING H
2~8	G78-8101	SPOOL ASSEMBLY
9	G33-9201	SPOOL METAL
10	G33-9301	PIN A
11	G33-9101	O RING A
12	G33-9401	O RING B
13	F21-6101	BALL BEARING A
14	G34-1501	SPOOL WASHER
15	G34-1401	CLICK LEAF SPRING
16	G34-1301	CLICK LEAF SPRING HOLDER
17	G33-9001	BALL BEARING B
18	G33-8901	MAIN SHAFT PIN
19	G33-5101	MAIN SHAFT
20	E46-8801	ROTOR NUT HOLD PLATE SCREW
21	G33-8801	ROTO NUT HOLD PLATE
22	G33-8701	ROTOR NUT SHIELD
23	F01-6401	BALL BEARING C
24	G33-8601	ROTOR NUT
25	G33-8501	ROTOR NUT COLLAR
26	G33-8401	O RING C
27	E49-2001	ROTOR NUT LOCK SCREW
28	G33-7205	ROTOR
29	G16-2202	LINE ROLLER SCREW
30	G16-0605	BAIL ARM
31	G16-2001	LINE ROLLER BUSHING
32	F84-4901	BALL BEARING D
33	G16-2101	LINE ROLLER
34	E09-6500	LINE ROLLER WASHER
35	G78-7701	BAIL
36	G33-8202	BAIL HOLDER COVER
37	351-6109	BAIL HOLDER SCREW
38	G34-1202	BAIL HOLDER NUT
39	352-1106	BAIL ARM SCREW
40	G33-7301	BAIL SPRING SHAFT
41	G41-8101	BAIL SPRING
42	G33-7501	BAIL SPRING HOLDER
43	G33-7702	BAIL SPRING COVER
44	G16-1002	BAIL SPRING COVER SCREW

Key No.	Parts No.	Description
45	G33-7601	ROTOR BRAKE SPRING
46	G33-7804	ROTOR BRAKE SPRING COVER
47	G16-1002	ROTOR BRAKE COVER SCREW
48	G33-8301	WATER SHIELD
49	G33-5901	ROTOR CLUTCH COVER
50	G15-8601	O RING D
51	637-6101	BALL BEARING E
52	G33-5801	COLLAR
53	F76-5401	ROLLER CLUTCH
54	G33-5701	SPACING SLEEVE
55	G15-8101	ROLLER CLUTCH WASHER
56	E26-2701	A/R RATCHET
57	372-7603	RATCHET WASHER
58	G41-7401	PINION GEAR
59	B86-1703	BALL BEARING D
60	G33-5501	PINION COLLAR
61	G78-7601	BODY
62	G71-6401	BEARING HOLDER SCREW A
63	G33-7001	BODY SHIELD
64	G34-3901	A/R CLAW
65	G33-6201	A/R CLAW BUSHING
66	351-6413	A/R CLAW SCREW
67	G33-4901	OSC GEAR A
68	G15-7401	OSC GEAR SPRING
69	G33-4801	OSC GEAR B
70	G33-5001	OSC GEAR COLLAR
71	G34-3401	BALL BEARING F
72	G34-3501	OSC GEAR SCREW
73	G15-6701	BALL BEARING SHIELD A
74	G15-6801	BALL BEARING H
75	G33-4701	OSC PINION GEAR
76	G33-6701	OSC GEAR SHIELD
77	G33-6601	A/R CLAW SPRING
78	G41-7501	DRIVE GEAR
79	B27-0700	DRIVE GEAR WASHER A
80	637-6101	BALL BEARING E
81	G33-6901	BALL BEARING SHIELD B
82	G15-9901	BEARING HOLDER SCREW B
83	G33-6807	BODY COVER
84	G16-0104	SIDE COVER SCREW
85	G33-7101	BODY RING
86	G34-0004	HANDLE CAP
87	G78-7901	HANDLE
88	375-9801	DRIVE GEAR WASHER B