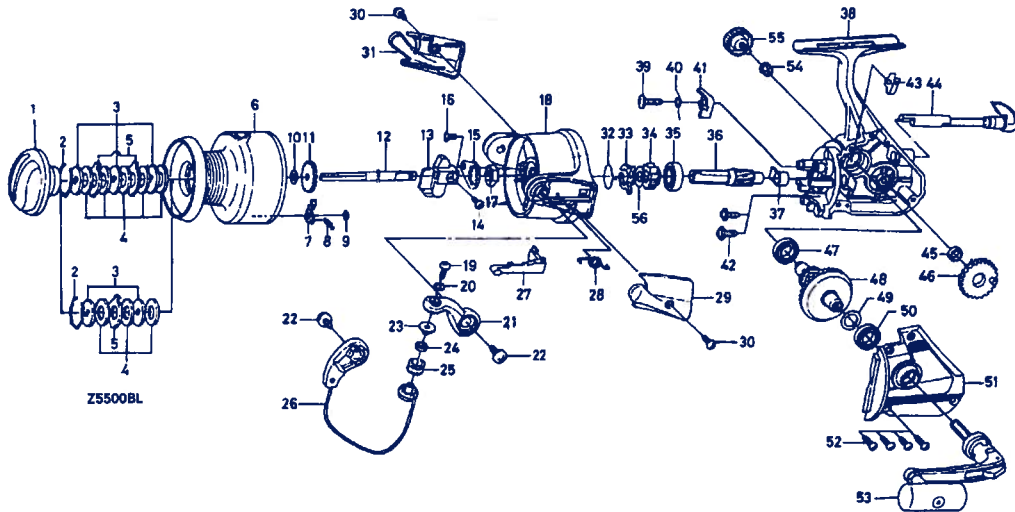


SPINNING REEL REGAL RG-Z5500BL/RG-Z6000BL



Key No.	Parts No.	Parts Name	Key No.	Parts No.	Parts Name
2-9	F43-8602	Spool assembly (Aluminum Spool)	33	L07-0701	Anti-reverse pawl spring B
	F42-5901	Spool assembly (Extra Spool)	34	F39-4201	Anti-reverse ratchet
1	F36-9803	Drag knob	35	637-6101	Ball bearing 6
2	171-7701	Drag washer retainer	36	L11-4401	Pinion gear
3	L03-1301	Key washer	37	L00-6001	Pinion collar
4	373-3712	Drag washer	38	E53-5001	Body assembly
5	B89-9501	Eared washer	39	L06-6501	Anti-reverse pawl screw
6	L13-6403	Spool assembly	40	L06-6401	Anti-reverse pawl spring C
7	B07-8201	Click pawl	41	L07-8601	Anti-reverse pawl
8	145-2101	Click spring	42	L01-1601	Bearing retainer screw
9	320-1402	Click retainer	43	E01-1801	Anti-reverse cam spring
10	F22-5501	Spool washer	44	L10-0714	Anti-reverse lever
11	L11-8501	Click gear	45	B47-4101	Oscillating gear collar
12	F42-9502	Main shaft	46	L11-4701	Oscillating gear
13	F42-9101	Oscillating slider	47	B54-6001	Ball bearing C
14	351-8901	Oscillating slider screw 1/2v	48	L07-1701	Drive gear
15	B02-1601	Rotor nut holding(plate	49	371-2821	Drive gear washer
16	L01-1702	Rotor nut holding plate screw	50	B54-6001	Ball bearing D
17	340-8301	Rotor nut	51	E53-5401	Side cover
18	F39-4403	Rotor	52	B83-5002	Side cover screw
19	E45-4002	Line roller screw	53	E53-4801	Handle assembly
20	160-8401	Lock washer	54	F40-9001	Handle collar
21	F39-4303	Bail arm	55	L00-9106	Handle lock screw
22	E00-7601	Bail arm screw	56	F43-1001	Ratchet washer
23	F08-8301	Line roller collar			
24	F05-5601	Ball bearing A			
25	F05-8901	Line roller			
26	F40-4301	Bail assembly			
27	F41-3401	Bail trip lever			
28	F43-6401	Bail spring			
29	F39-3303	Bail spring cover			
30	E24-8101	Bail spring cover screw			
31	F39-3403	Bail trip cover			
32	F21-2001	Anti-reverse pawl spring A			

RG-Z6000BL Special Parts		
2-9	F43-2502	Spool assembly (Aluminum Spool)
	F43-2701	Spool assembly (Extra Spool)
18	F39-4703	Rotor assembly
26	F40-4401	Bail assembly
27	F39-3501	Bail trip lever
38	E53-5002	Body assembly
51	E53-5402	Side cover