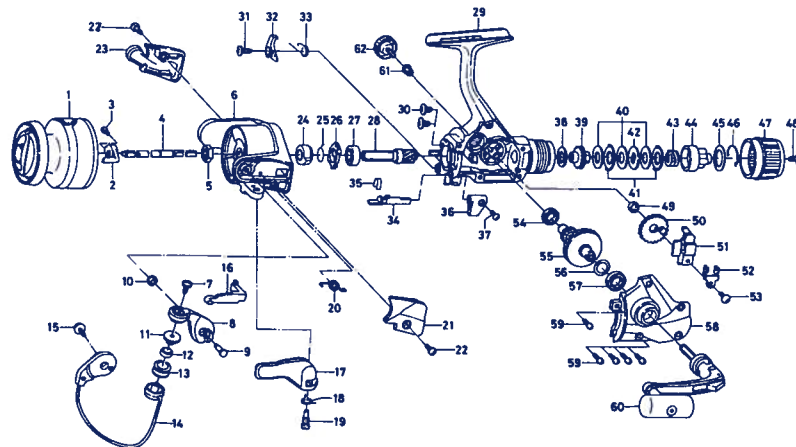


SPINNING REEL REGAL RG-Z3555BL



| Key No. | Parts No. | Parts Name | Key No. | Parts No. | Parts Name |
|---------|-----------|---------------------------------|---------|-----------|-----------------------------|
| 1 | F33-7501 | Spool assembly (Aluminum spool) | 33 | F19-9801 | Anti-reverse pawl spring B |
| | F35-9201 | Spool assembly (Extra spool) | 34 | F19-5101 | Anti-reverse cam |
| 2 | F20-1602 | Spool metal | 35 | F19-5201 | Anti-reverse cam spring |
| 3 | 351-1001 | Spool metal screw | 36 | F19-4903 | Anti-reverse lever |
| 4 | F20-0102 | Main shaft | 37 | B64-6602 | Anti-reverse lever screw |
| 5 | 340-6602 | Rotor nut | 38 | B46-9505 | Drag washer A |
| 6 | F33-3503 | Rotor | 39 | L11-0701 | Click gear |
| 7 | B67-9304 | Line roller screw | 40 | L11-0801 | Drag washer B |
| 8 | F17-9803 | Bail arm | 41 | L11-0901 | Eared washer |
| 9 | E49-3501 | Bail arm screw | 42 | L11-1001 | Key washer |
| 10 | 320-5901 | Bail arm screw retainer | 43 | F06-2301 | Drag coil spring |
| 11 | F06-6301 | Line roller collar | 44 | F20-0601 | Drag collar |
| 12 | F05-5601 | Ball bearing A | 45 | L11-0101 | Drag collar washer |
| 13 | F05-8901 | Line roller | 46 | L08-0701 | Drag washer spring |
| 14 | F33-4001 | Bail assembly | 47 | F33-7902 | Drag knob |
| 15 | B84-2102 | Bail trip cam screw | 48 | E03-7802 | Drag knob screw |
| 16 | E46-2101 | Bail trip lever | 49 | F13-1601 | Oscillating gear collar |
| 17 | F18-0003 | Trigger lever | 50 | E46-1501 | Oscillating gear |
| 18 | E36-9901 | Trigger spring | 51 | F19-9201 | Oscillating slider |
| 19 | E37-0003 | Trigger screw | 52 | F20-0201 | Oscillating slider retainer |
| 20 | F12-8901 | Bail spring | 53 | 351-0901 | Oscillating slider screw |
| 21 | F31-4503 | Bail spring cover | 54 | 631-6901 | Ball bearing C |
| 22 | E24-8101 | Bail spring cover screw | 55 | E52-0201 | Drive gear |
| 23 | F31-4603 | Bail trip cover | 56 | 373-7802 | Drive gear washer |
| 24 | F24-8901 | Anti-reverse ratchet | 57 | 631-6901 | Ball bearing C |
| 25 | F20-1101 | Anti-reverse pawl spring A | 58 | F20-0311 | Side cover |
| 26 | F20-1001 | Spring holder | 59 | E15-8602 | Side cover screw |
| 27 | L03-6502 | Ball bearing B | 60 | F33-5501 | Handle assembly |
| 28 | E52-0101 | Pinion gear | 61 | E12-7501 | Handle collar |
| 29 | F20-0020 | Body assembly | 62 | B92-5007 | Handle lock screw |
| 30 | E03-7801 | Bearing retainer screw | | | |
| 31 | E00-7101 | Anti-reverse pawl screw | | | |
| 32 | F19-9901 | Anti-reverse pawl | | | |