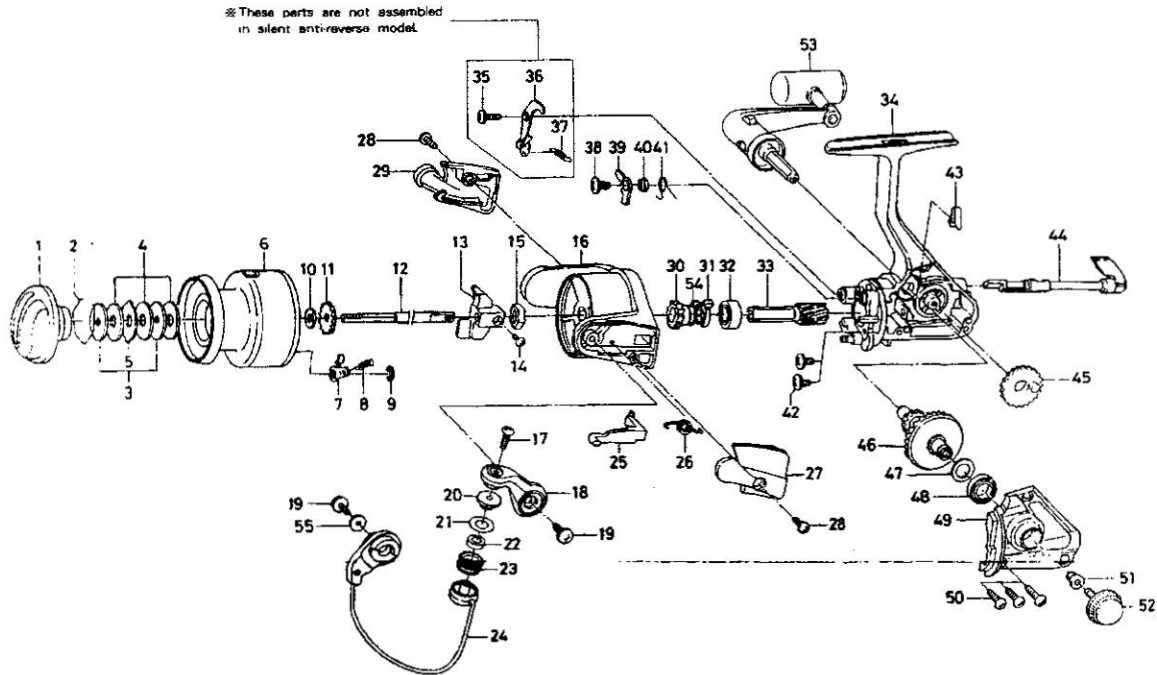


SPINNING REEL

REGAL-X2500T



Key No.

| Key No. | Parts No. | Parts Name |
|---------|-----------|--------------------------|
| 2-9 | F49-3001 | Spool assembly |
| 1 | F42-0906 | Drag knob |
| 2 | F37-3301 | Drag washer retainer |
| 3 | E46-7201 | Key washer |
| 4 | E13-6001 | Drag washer |
| 5 | 373-3603 | Eared washer |
| 6 | F49-3101 | Spool assembly |
| 7 | B07-5304 | Click pawl |
| 8 | E40-3101 | Click spring |
| 9 | 320-5901 | Click retainer |
| 10 | E46-7101 | Spool washer |
| 11 | 270-6501 | Click gear |
| 12 | F45-4502 | Main shaft |
| 13 | E45-1401 | Oscillating slider |
| 14 | 351-0315 | Oscillating slider screw |
| 15 | 341-9201 | Rotor nut |
| 16 | F42-4705 | Rotor |
| 17 | B67-9308 | Line roller screw |
| 18 | F45-2302 | Bail arm |
| 19 | B84-2102 | Bail arm screw |
| 20 | F44-6302 | Line roller collar |
| 21 | F44-6201 | Line roller washer |
| 22 | F47-3401 | Line roller bushing |
| 23 | F45-4902 | Line roller |
| 24 | F48-8201 | Bail assembly |
| 25 | E45-1601 | Bail trip lever |
| 26 | F12-8901 | Bail spring |
| 27 | F31-0305 | Bail spring cover |
| 28 | E36-4202 | Bail spring cover screw |
| 29 | F35-2305 | Bail trip cover |
| 30 | F31-1502 | Anti-reverse ratchet |

Key No.

| Key No. | Parts No. | Parts Name |
|---------|-----------|----------------------------|
| 31 | F37-5101 | Spring holder |
| 32 | L03-6601 | Ball bearing A |
| 33 | E51-9801 | Pinion gear |
| 34 | F49-2701 | Body assembly |
| 38 | L00-1801 | Anti-reverse pawl screw |
| 39 | F37-5001 | Anti-reverse pawl |
| 40 | L01-4302 | Anti-reverse pawl collar |
| 41 | L00-1501 | Anti-reverse pawl spring A |
| 42 | E03-7801 | Bearing retainer screw |
| 43 | E32-7801 | Anti-reverse cam spring |
| 44 | F08-5120 | Anti-reverse lever |
| 45 | E45-1301 | Oscillating gear |
| 46 | F17-0001 | Drive gear |
| 47 | 373-7805 | Drive gear washer |
| 48 | 631-6901 | Ball bearing B |
| 49 | F49-2801 | Side cover |
| 50 | 683-5002 | Side cover screw |
| 51 | F40-4801 | Handle collar |
| 52 | B92-5011 | Handle screw |
| 53 | F49-9701 | Handle Assembly |
| 54 | F38-4701 | Anti-reverse pawl spring B |
| 55 | F40-1001 | Bail holder washer |

SPECIAL PARTS MADE IN JAPAN

Key No.

| Key No. | Parts No. | Parts Name |
|---------|-----------|---------------|
| 33 | F37-7501 | Pinion gear |
| 34 | F48-7901 | Body |
| 56 | E24-3301 | Pinion collar |