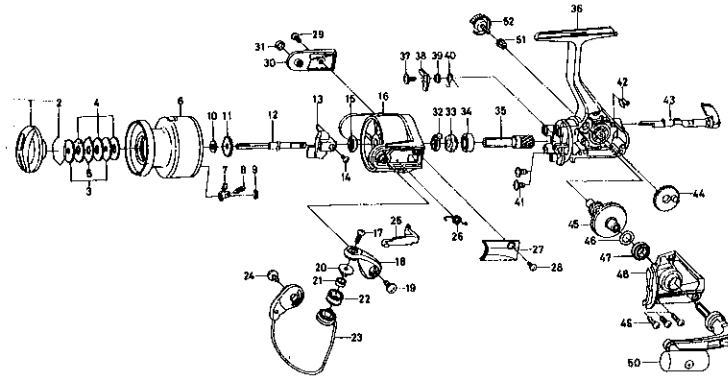




SPINNING REEL PS700BL



A350GU1

Key No. 2-9

6-E52-2501 Spool assembly

Key No.	Parts No.	Parts Name	Key No.	Parts No.	Parts Name
1	6-F19-9101	Drag knob	26	6-E49-6801	Bail spring
2	6-171-7701	Drag washer retainer	27	6-E49-6201	Bail spring cover
3	6-E46-7201	Key washer	28	6-E36-4201	Bail spring cover screw
4	6-E13-6001	Drag washer	29	6-L01-1701	Bail trip cover screw
5	6-373-3603	Eared washer	30	6-F17-2901	Bail trip cover
6	6-E52-2601	Spool assembly	31	6-F17-3001	Bail trip collar
7	6-B07-5304	Click pawl	32	6-F12-2101	Anti-reverse pawl spring A
8	6-E40-3101	Click spring	33	6-F12-1801	Anti-reverse ratchet
9	6-320-5901	Click retainer	34	6-634-1301	Ball bearing B
10	6-L02-5001	Spool washer	35	6-F12-1601	Pinion gear
11	6-270-6501	Click gear	36	6-F17-2201	Body assembly
12	6-E49-8401	Main shaft	37	6-F12-6701	Anti-reverse pawl screw
13	6-F12-2301	Oscillating slider	38	6-F12-1901	Anti-reverse pawl
14	6-351-0311	Oscillating block screw	39	6-F12-3501	Anti-reverse pawl collar
15	6-341-9201	Rotor nut	40	6-F12-3401	Anti-reverse pawl spring B
16	6-E50-0505	Rotor	41	6-E03-7801	Bearing retainer screw
17	6-B67-9305	Line roller screw	42	6-F12-2001	Anti-reverse cam spring
18	6-F17-2401	Bail arm	43	6-F08-5117	Anti-reverse lever
19	6-E00-7102	Bail arm screw	44	6-F12-2201	Oscillating gear
20	6-F06-6301	Line roller collar	45	6-F12-1501	Drive gear
21	6-F05-5601	Ball bearing A	46	6-376-8500	Drive gear washer
22	6-F05-8901	Line roller	47	6-634-1301	Ball bearing C
23	6-F17-2501	Bail assembly	48	6-F16-2105	Side cover
24	6-353-8208	Bail trip cam screw	49	6-E15-8601	Side cover screw
25	6-E49-6401	Bail trip lever	50	6-E52-2701	Handle assembly
			51	6-501-8501	Handle collar
			52	6-B92-6005	Handle lock screw

Printed in Thailand