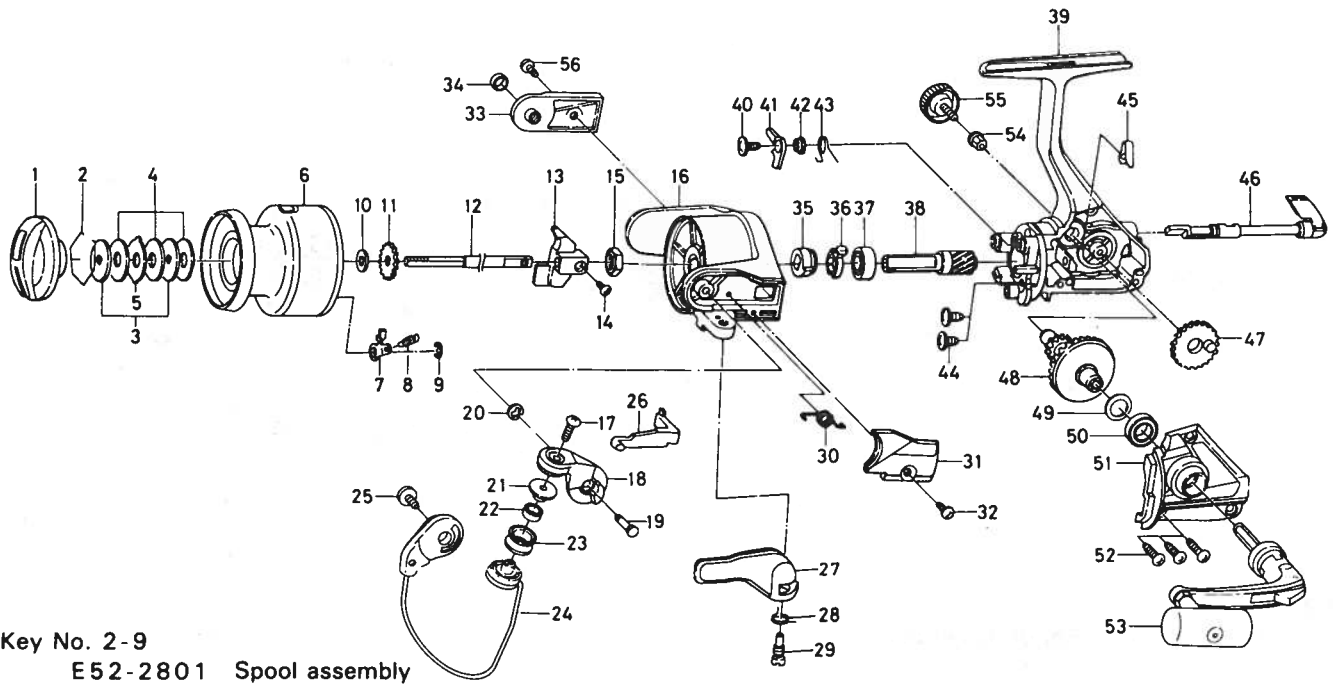


SPINNING REEL — PS1305BL



Key No. 2-9
E52-2801 Spool assembly

Key No.	Parts No.	Parts Name
1	F19-8601	Drag knob
2	171-7701	Drag washer retainer
3	E46-7201	Key washer
4	E13-6003	Drag washer
5	373-3603	Eared washer
6	E52-2901	Spool assembly
7	B07-5304	Click pawl
8	E40-3101	Click spring
9	320-5901	Click retainer
10	E46-7101	Spool washer
11	270-6501	Click gear
12	E48-4301	Main shaft
13	E45-1401	Oscillating slider
14	351-0315	Oscillating block screw
15	341-9201	Rotor nut
16	F11-1204	Rotor
17	B67-9305	Line roller screw
18	F17-9801	Bail arm
19	E49-3501	Bail arm screw
20	320-5901	Bail arm screw retainer
21	F06-6301	Line roller collar
22	F05-5601	Ball bearing A
23	F05-8901	Line roller
24	F18-0101	Bail assembly
25	B51-5302	Bail trip cam screw
26	E45-1601	Bail trip lever
27	F18-0001	Trigger lever
28	E36-9901	Trigger spring

Key No.	Parts No.	Parts Name
29	E37-0001	Trigger screw
30	F12-8901	Bail spring
31	E49-4201	Bail spring cover
32	E36-4201	Bail spring cover screw
33	F17-9901	Bail trip cover
34	F17-3001	Bail trip collar
35	E49-2401	Anti-reverse ratchet
36	E38-5501	Anti-reverse pawl spring A
37	L03-6601	Ball bearing B
38	E51-9801	Pinion gear
39	F17-9601	Body assembly
40	L00-1801	Anti-reverse pawl screw
41	L01-4401	Anti-reverse pawl
42	L01-4302	Anti-reverse pawl collar
43	L00-1501	Anti-reverse pawl spring B
44	E03-7801	Bearing retainer screw
45	E32-7801	Anti-reverse cam spring
46	F08-5118	Anti-reverse lever
47	E45-1301	Oscillating gear
48	F17-0001	Drive gear
49	373-7800	Drive gear washer
50	631-6901	Ball bearing C
51	E50-5505	Side cover
52	B83-5001	Side cover screw
53	L05-2202	Handle assembly
54	501-8501	Handle collar
55	B92-5002	Handle lock screw
56	L01-1701	Bail trip cover screw