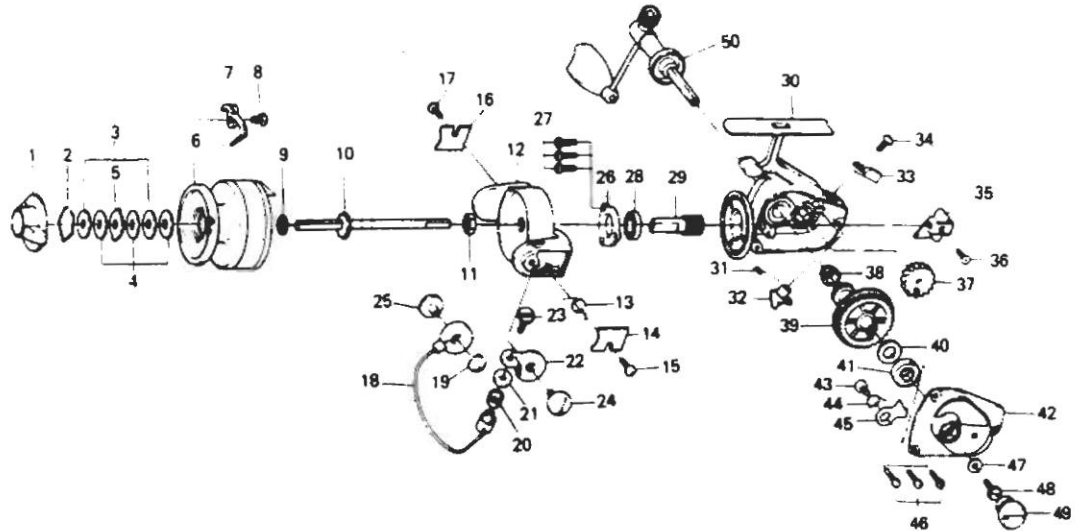


SPINNING REEL **GS-1**



**LINE CAPACITY: 160 YDS., 6 LB. TEST (145m. 2.7kg)**

Key No. 2 ~ 8

6-731-008 Spool assembly

Key No.	Parts No.	Parts Name	Key No.	Parts No.	Parts Name
1	6-740-2302	Drag knob	26	6-634-1702	Ball bearing ret. washer
2	6-170-7701	Drag washer retainer	27	6-351-1001	Ball bearing ret. washer screw
3	6-374-9802	Drag D washer	28	6-634-1301	Ball bearing
4	6-374-3602	Disc washer	29	6-402-2201	Pinion gear
5	6-374-3802	Drag A washer	30	6-700-4708	Body
6	6-731-0106	Spool	31	6-142-2801	Anti-reverse cam spring
7	6-030-4511	Spool click claw	32	6-460-6821	Anti-reverse cam
8	6-351-1801	Spool click claw screw	33	6-540-3711	Anti-reverse lever
9	6-372-3501	Spool washer	34	6-350-1931	Anti-reverse lever screw
10	6-710-7801	Main shaft	35	6-481-0511	Oscillating slider
11	6-341-9201	Rotor nut	36	6-351-0311	Oscillating slider screw
12	6-735-4401	Rotor	37	6-413-0101	Oscillating gear
13	6-143-9401	Bail spring	38	6-636-4101	Bearing metal
14	6-040-5001	Bail spring cover	39	6-413-0201	Drive gear
15	6-351-1801	Bail spring cover screw	40	6-370-5150	Drive gear washer
16	6-040-5001	Bail spring cover	41	6-634-1301	Ball bearing
17	6-351-1801	Bail spring cover screw	42	6-705-7706	Body cover
18	6-725-4711	Bail	43	6-351-7701	Anti-reverse claw screw
19	6-143-9511	Arm lever spring	44	6-143-9601	Anti-reverse claw spring
20	6-250-3901	Line roller	45	6-111-3411	Anti-reverse claw
21	6-501-1401	Roller collar	46	6-351-1001	Body cover screw
22	6-231-1501	Arm lever	47	6-372-4601	Handle washer
23	6-353-1811	Bail screw	48	6-362-1001	Handle screw
24	6-363-2201	Arm lever screw	49	6-363-6001	Handle screw cap
25	6-363-2201	Bail holder screw	50	6-745-8612	Handle