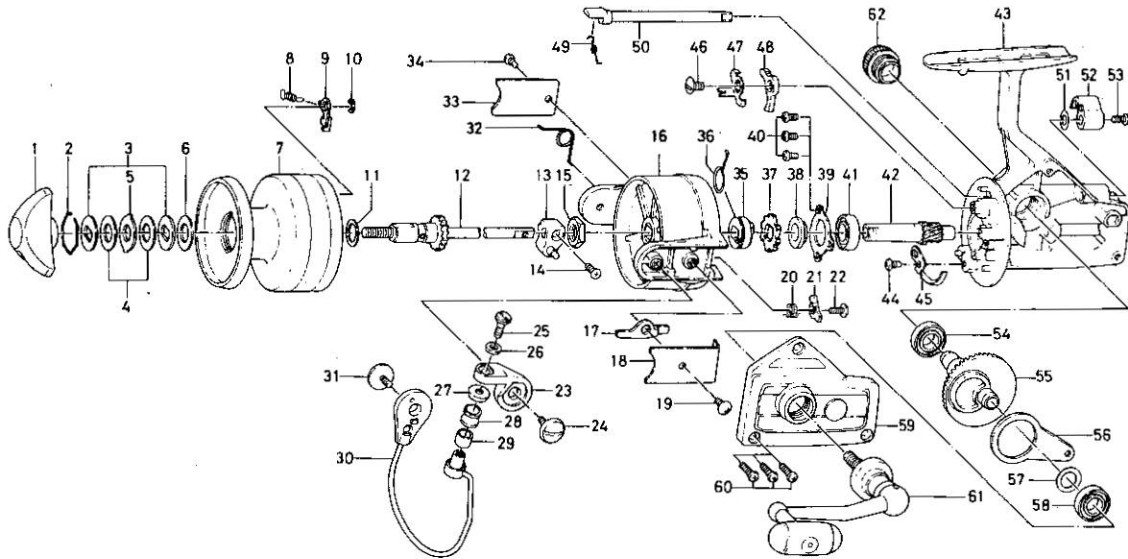


SPINNING REEL

GS-60X



KEY 2 ~ 10

NO. 6-734-7901 SPOOL ASSEMBLY

Key No.	Parts No.	Parts Name
1	000-8241	Drag knob
2	170-4511	Drag washer retainer
3	376-0101	Drag D washer
4	372-6504	Disc washer
5	375-5401	Drag A washer
6	372-3004	Drag washer A
*7	734-8002	Spool
8	145-2101	Spool click claw spring
9	B07-8201	Spool click claw
10	320-1402	Spool click claw retainer
11	372-9601	Spool washer
12	711-5801	Main shaft
13	637-4111	Oscillating support
14	351-8901	Oscillating slider screw
15	340-8301	Rotor nut
16	202-1901	Rotor
17	571-1201	Bail kick lever
18	041-9201	Bail kick lever cover
19	351-7701	Bail kick lever cover screw
20	145-3001	Bail kick cam spring
21	571-1101	Bail kick cam
22	353-8201	Bail kick cam screw
23	231-3501	Arm lever
24	363-5201	Arm lever screw
25	363-3111	Bail screw
26	375-1101	Bail washer
27	501-2001	Roller collar
28	250-4501	Line roller
29	502-1401	Roller metal
30	725-8701	Bail
31	363-5201	Bail holder screw

Key No.	Parts No.	Parts Name
32	B21-1801	Bail spring
33	B01-4001	Bail spring cover
34	351-6101	Bail spring cover screw
35	502-1301	Spring holder
36	145-2901	Anti-reverse claw spring
37	B10-0801	Ratchet
38	636-6711	Click gear
39	050-5101	Ball bearing ret. washer
40	351-6601	Ball bearing ret. washer screw
41	635-5001	Ball bearing
42	403-3301	Pinion gear
43	701-7201	Body
44	351-6601	Cam kick plate screw
45	B22-9901	Cam kick plate
46	352-1102	Anti-reverse claw screw
47	041-9101	Anti-reverse claw plate
48	111-9201	Anti-reverse claw
49	144-0321	Anti-reverse cam spring
50	B15-6402	Anti-reverse cam
51	373-2700	Anti-reverse lever washer
52	541-7301	Anti-reverse lever
53	352-2501	Anti-reverse lever screw
54	636-6011	Ball bearing
55	414-2901	Drive gear
56	481-2701	Oscillating slider
57	371-2800	Drive gear washer
58	636-6011	Ball bearing
59	707-1501	Body cover
60	351-5901	Body cover screw
61	748-1201	Handle
62	B07-4703	Handle screw cap

*Not sold separately. See Spool Assembly.