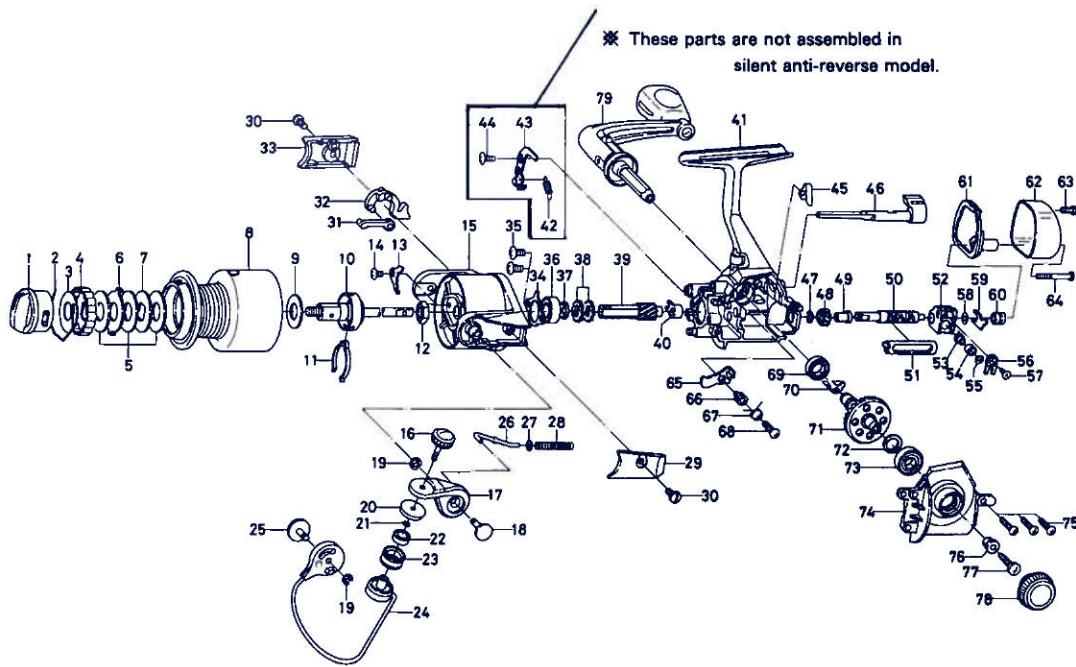


SPINNING REEL — EX750



Key No. 2-8

F01-7401 Spool assembly

Key No.	Part No.	Part Name
1	F01-8101	Drag knob
2	F06-2601	Drag washer retainer
3	F01-6001	Click plate washer
4	E12-2803	Drag knob click plate
5	B36-0204	Drag washer
6	E15-0101	Eared washer
7	B65-2302	Key washer
8	F01-7501	Spool assembly
9	F06-2701	Spool washer
10	F01-5501	Main shaft assembly
11	B74-7702	Spool click tear spring
12	341-9204	Rotor nut
13	B99-5101	Rotor nut holding plate
14	350-8912	Rotor nut holding plate screw
15	F04-9801	Rotor
16	F01-5001	Line roller screw
17	F01-3401	Bail arm
18	F01-3501	Bail arm screw
19	320-5901	Bail arm screw retainer
20	F01-4901	Line roller collar
21	B85-3101	"O" ring
22	F05-5601	Ball bearing A
23	F06-3201	Line roller
24	F01-3801	Bail
25	F01-4501	Bail trip cam screw
26	E11-5801	Bail spring shaft
27	E11-5901	Bail spring washer
28	E11-6001	Bail spring
29	F01-3601	Bail spring cover
30	F01-3701	Bail spring cover screw
31	F01-4301	Bail trip plate
32	F01-4401	Bail trip lever
33	F01-4601	Bail trip cover
34	F01-3001	Bearing retainer
35	351-7701	Bearing retainer screw
36	636-6401	Ball bearing B
37	F01-6901	Spacer
14 38	E27-1501	Anti-reverse ratchet

Key

Key No.	Part No.	Part Name
39	E24-4202	Pinion gear
40	E24-3301	Pinion collar
41	F01-2302	Body
45	E26-8701	Anti-reverse cam spring
46	F01-2705	Anti-reverse lever
47	B33-9801	Worm shaft gear retainer
48	E24-8202	Worm shaft gear
49	E19-0901	Worm shaft bush
50	E42-6101	Worm shaft
51	E24-4501	Worm shield cover
52	E24-4403	Oscillating slider
53	E19-1202	Oscillating pawl
54	E19-1301	Oscillating pawl bush
55	375-0800	Oscillating pawl washer
56	E24-4901	Oscillating slider cover
57	E15-0203	Oscillating slider cover screw
58	373-1300	Worm shaft washer
59	E24-5101	Worm shaft retainer
60	E19-1101	Worm shaft collar
61	F01-6101	Water shield
62	F01-6201	Rear cover
63	F01-6301	Rear cover screw A
64	F01-7201	Rear cover screw B
65	E27-1301	Anti-reverse pawl
66	B95-9501	Anti-reverse pawl collar
67	B95-9602	Anti-reverse pawl spring A
68	351-6401	Anti-reverse pawl screw
69	F01-6401	Ball bearing C
70	E24-5301	Anti-reverse pawl spring
71	E24-7004	Drive gear
72	375-8502	Drive gear washer
73	636-6401	Ball bearing B
74	F01-3201	Left side cover
75	351-1101	Side cover screw
76	501-8501	Handle collar
77	F04-5001	Handle screw
78	F01-7301	Handle screw cap
79	F01-5701	Handle assembly