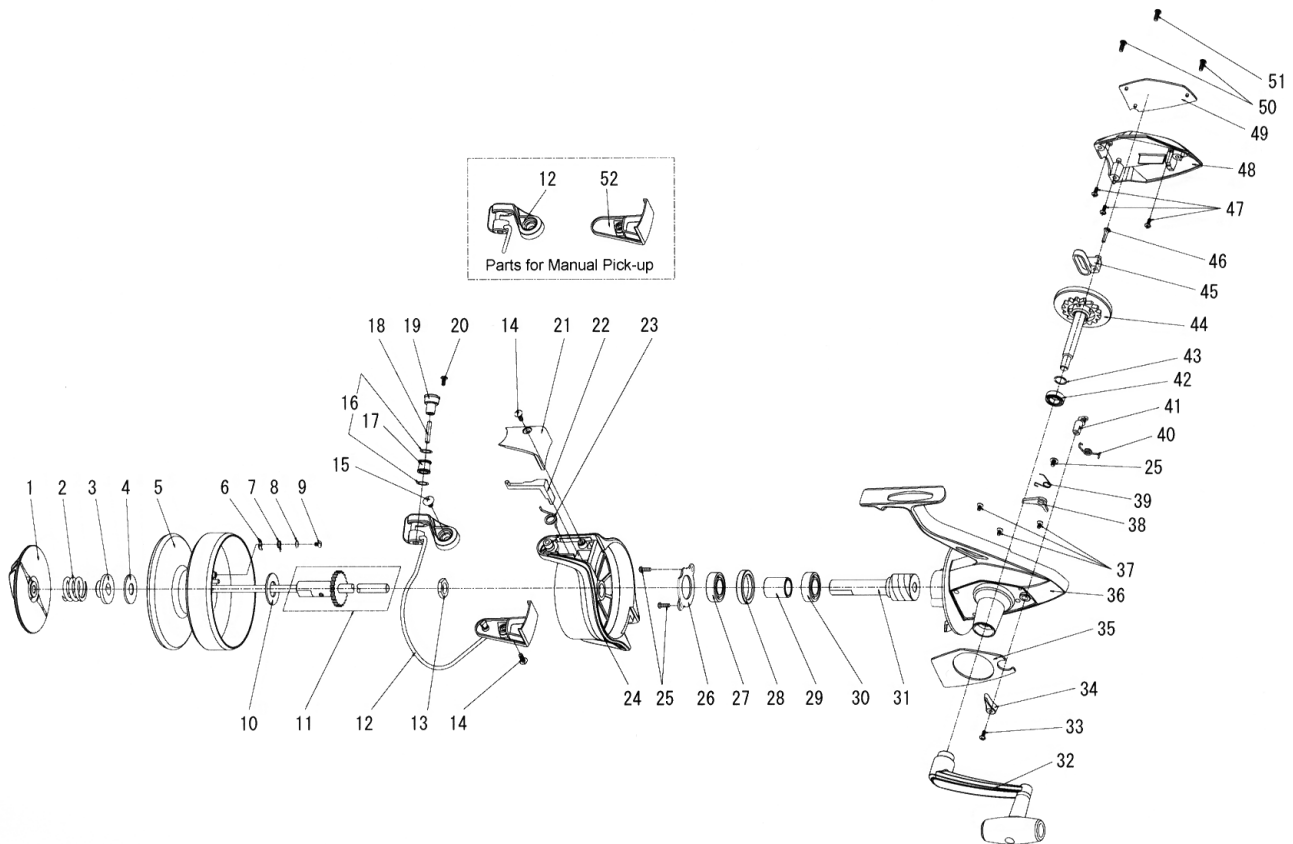


SPINNING REEL DF 100A/100AM



Key No.	Parts No.	Parts Name
1	6W4000010	Drag Knob
2	6W4001010	Drag Coil Spring
3	6W4002010	Drag Metal
4	6W4003010	Washer (A)
5-9	6W4004010	Spool Assembly
6	6W4005010	Click Pawl
7	6W4006010	Click Spring
8	6W4007010	Washer (B)
9	6W4008010	Screw (A)
10	6W4009010	Washer (C)
11	6W4010010	Main Shaft
12	6W4011010	Bail Assembly
13	6W4012010	Rotor Nut
14	6W4013010	Screw (B)
15	6W4014010	Screw (C)
16	6W4015010	Washer (D)
17	6W4016010	Line Roller
18	6W4017010	Line Roller Pin
19	6W4018010	Line Roller Collar
20	6W4019010	Screw (D)
21	6W4020010	Cover (A)
22	6W4021010	Bail Trip Lever
23	6W4022010	Bail Trip Lever Spring
24	6W4023010	Rotor
25	6W4024010	Screw (E)
26	6W4025010	Bearing Retainer
27	6W4026010	Ball Bearing
28	6W4027010	Collar (A)
29	6W4028010	Spacing Sleeve
30	6W4026510	Bushing (A)
31	6W4029010	Pinion Gear
32	6W4030010	Handle Assembly
33	6W4031010	Screw (F)
34	6W4032010	Anti-Reverse Lever
35	6W4033010	Plate (A)
36	6W4034010	Body
37	6W4035010	Screw (G)
38	6W4036010	Anti-Reverse Pawl
39	6W4037010	Anti-Reverse Pawl Spring
40	6W4038010	Anti-Reverse Cam Spring
41	6W4039010	Anti-Reverse Cam
42	6W4040510	Bushing (B)
43	6W4041010	Washer (E)
44	6W4042010	Drive Gear
45	6W4043010	Oscillating Slider
46	6W4044010	Oscillating Slider Pin
47	6W4045010	Screw (H)
48	6W4046010	Side Cover
49	6W4047010	Plate (B)
50	6W4048010	Screw (I)
51	6W4049010	Screw (J)

DF 100AM SPECIAL PARTS		
Key No.	Parts No.	Parts Name
12	6W4011020	Bail Assembly
52	6W4050010	Cover (B)