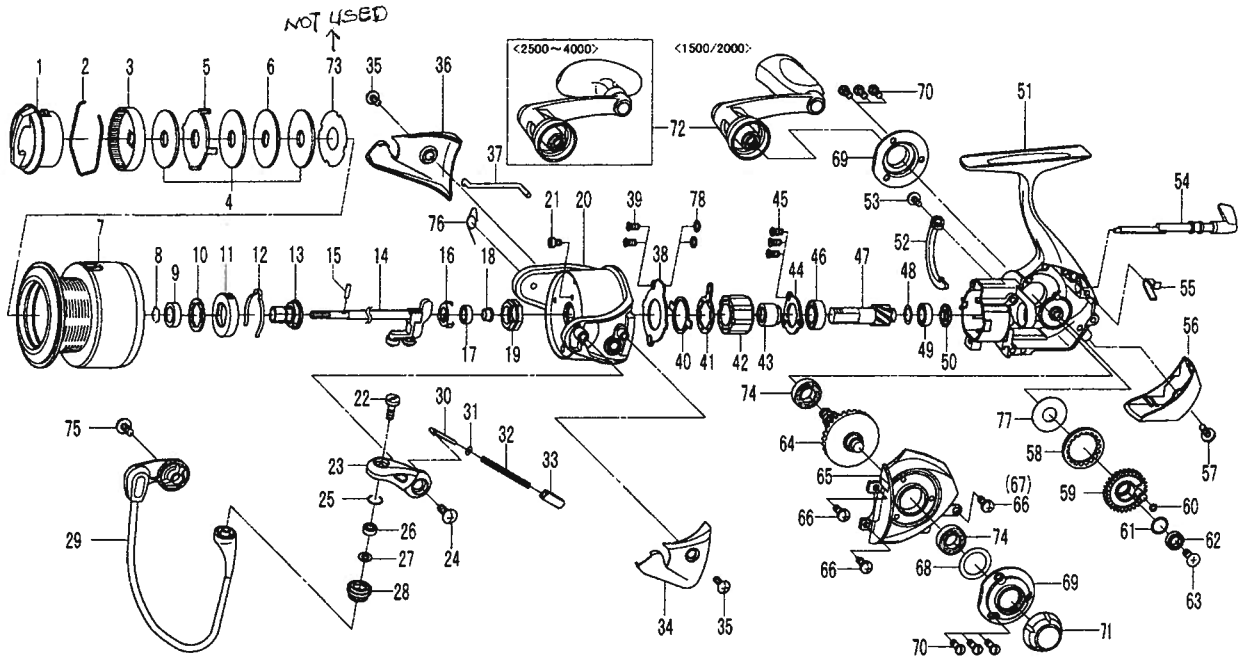


# Certate 3000



Key No.	Parts No.	Parts Name
1	G46-9901	DRAG KNOB
2	F71-0001	DRAG WASHER RET
3	F89-5304	DRAG KNOB CLICK PLT
4	F69-1001	DRAG WASHER
5	F62-7301	EARED WASHER
6	F62-7201	KEY WASHER
2-7	G50-9301	SPOOL
8	G47-2401	SPOOL RET
9	G09-5801	SPOOL COLLAR
10	F62-5500	SPOOL WASHER
11	G47-2201	CLICK LEAF SPRING HOLDER
12	F70-4901	SPOOL CLICK LEAF SPRING
13	G50-9001	SPOOL METAL
14	G50-7301	MAIN SHAFT
15	G37-5001	PIN
16	G47-1501	BEARING RET A
17	G46-6201	BALL BEARING A
18	G50-8901	BALL BEARING COLLAR A
19	G47-1301	ROTOR NUT
20	G50-8301	ROTOR
21	E49-2001	ROTOR NUT LOCK SCREW
22	F92-1702	LINE ROLLER SCREW
23	F89-2227	BAIL ARM
24	351-7701	BAIL ARM SCREW
25	G47-1101	O RING A
26	G28-1601	BALL BEARING B
27	F89-7101	LINE ROLLER WASHER
28	G47-0901	LINE ROLLER
29	G50-8501	BAIL
30	G47-1801	BAIL SPRING SHAFT
31	E31-3901	BAIL SPRING WASHER
32	G47-1701	BAIL SPRING
33	G47-1601	BAIL SPRING HOLDER
34	G50-8401	BAIL SPRING COVER
35	G33-2702	BAIL SPRING COVER SCREW
36	G50-8801	BAIL HOLDER COVER
37	G50-8701	BAIL TRIP LEVER

Key No.	Parts No.	Parts Name
39	G55-7101	BEARING RET C SCREW
40	G46-5401	CLUTCH CAM RET
41	F89-6801	CLUTCH CAM
42	G22-0603	ROLLER CLUTCH
43	G46-7501	SPACING SLEEVE
44	G46-7401	BEARING RET C
38	G46-7601	BEARING RET B
45	E13-4509	BEARING RET B SCREW
46	G53-5101	BALL BEARING C
47&64	Z01-7332	PINION, DRIVE GEAR SET
48	G57-2501	PINION WASHER
49	G46-7101	BALL BEARING D
50	G50-7601	BALL BEARING COLLAR B
51	G50-6501	BODY
52	G47-2001	A/R PLT
53	G40-0101	A/R PLT SCREW
54	G46-5602	A/R LEVER
55	G46-5501	A/R CAM SPRING
56	G50-8201	REAR COVER
57	F89-2701	REAR COVER SCREW
58	G50-7201	O RING B
59	G50-6801	OSC GEAR
60	G46-6001	O RING C
61	G46-6100	OSC GEAR WASHER A
62	G46-6202	BALL BEARING E
63	G46-6301	OSC GEAR SCREW
65	G50-8101	SIDE COVER
66	G46-8301	SIDE COVER SCREW
68	G46-8000	SIDE RING WASHER
69	G50-8001	SIDE RING
70	F62-3304	SIDE RING SCREW
71	G46-9401	HANDLE SCREW
72	G50-9101	HANDLE
74	G46-7302	BALL BEARING F
75	351-7701	BAIL HOLDER SCREW
76	G58-5501	BAIL HOLDER SPRING
77	G59-4901	OSC GEAR WASHER B