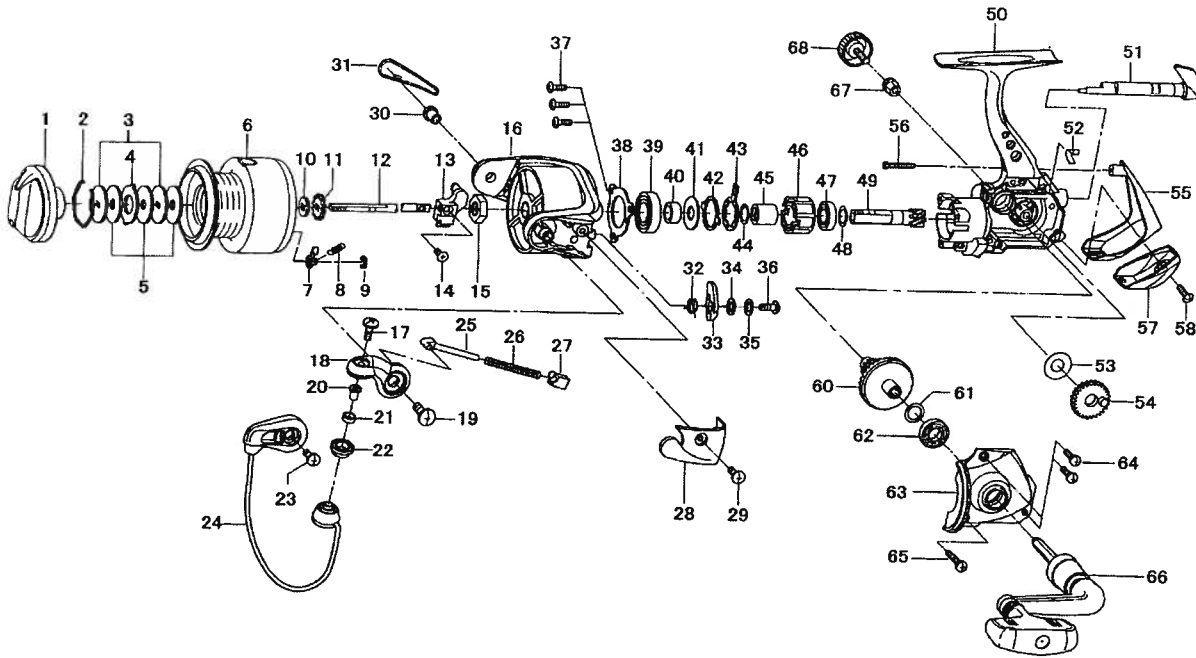


CAPRICE 2500



Key No.	Parts No.	Parts Name
1	G35-2001	DRAG KNOB
2	F37-3301	DRAG WASHER RET
3	E46-7201	KEY WASHER
4	373-3603	EARED WASHER
5	E13-6001	DRAG WASHER
2-9	G35-1801	SPOOL
7	B07-5304	CLICK PAWL
8	E40-3101	CLICK SPRING
9	320-5901	CLICK RET
10	E46-7101	SPOOL WASHER
11	F81-1501	CLICK GEAR
12	G01-6701	MAIN SHAFT
13	G01-6501	OSC SLIDER
14	351-0315	OSC SLIDER SCREW
15	F33-6102	ROTOR NUT
16	G19-4007	ROTOR
17	G01-8601	LINE ROLLER SCREW
18	G19-4505	BAIL ARM
19	G22-4901	BAIL ARM SCREW
20	G15-2501	LINE ROLLER COLLAR
21	G17-3801	LINE ROLLER BUSHING
22	F62-5001	LINE ROLLER
23	351-6101	BAIL HOLDER SCREW
24	G33-3302	BAIL
25	G01-7504	BAIL SPRING SHAFT
26	G01-7701	BAIL SPRING
27	G01-7401	BAIL SPRING HOLDER
28	G19-4602	BAIL SPRING COVER
29	G20-5101	BAIL SPRING COVER SCREW
30	G19-5101	BAIL HOLDER NUT
31	G33-3701	BAIL HOLDER COVER
32	G19-4101	BAIL TRIP LEVER SPRING
33	G26-5501	BAIL TRIP LEVER
34	375-3002	BAIL TRIP LEVER WASHER A

Key No.	Parts No.	Parts Name
35	375-3003	BAIL TRIP LEVER WASHER B
36	G19-3701	BAIL TRIP LEVER SCREW
37	G33-2701	BEARING RET SCREW
38	G19-3601	BEARING RET
39	G33-2601	BALL BEARING A
40	G19-3501	BALL BEARING COLLAR
41	B27-5403	BALL BEARING WASHER
42	F62-2301	CLUTCH CAM RET
43	F62-2201	CLUTCH CAM
44	375-8502	CLUTCH CAM WASHER
45	F73-2501	SPACING SLEEVE
46	G22-0601	ROLLER CLUTCH
47	G28-5801	BALL BEARING B
48	375-8504	PINION WASHER
49	G34-3101	PINION GEAR
50	G35-1601	BODY
51	G19-3110	A/R LEVER
52	G19-3301	A/R CAM SPRING
53	F76-7700	OSC GEAR WASHER
54	F67-7401	OSC GEAR
55	G33-3102	REAR COVER A
56	G34-3701	REAR COVER SCREW A
57	G33-3201	REAR COVER B
58	G33-2701	REAR COVER SCREW B
60	G34-3201	DRIVE GEAR
61	375-8500	DRIVE GEAR WASHER
62	G28-5801	BALL BEARING C
63	G33-2804	SIDE COVER
64	G33-2902	SIDE COVER SCREW A
65	G33-3002	SIDE COVER SCREW B
66	G35-1701	HANDLE
67	F72-1001	HANDLE COLLAR
68	F67-6509	HANDLE SCREW