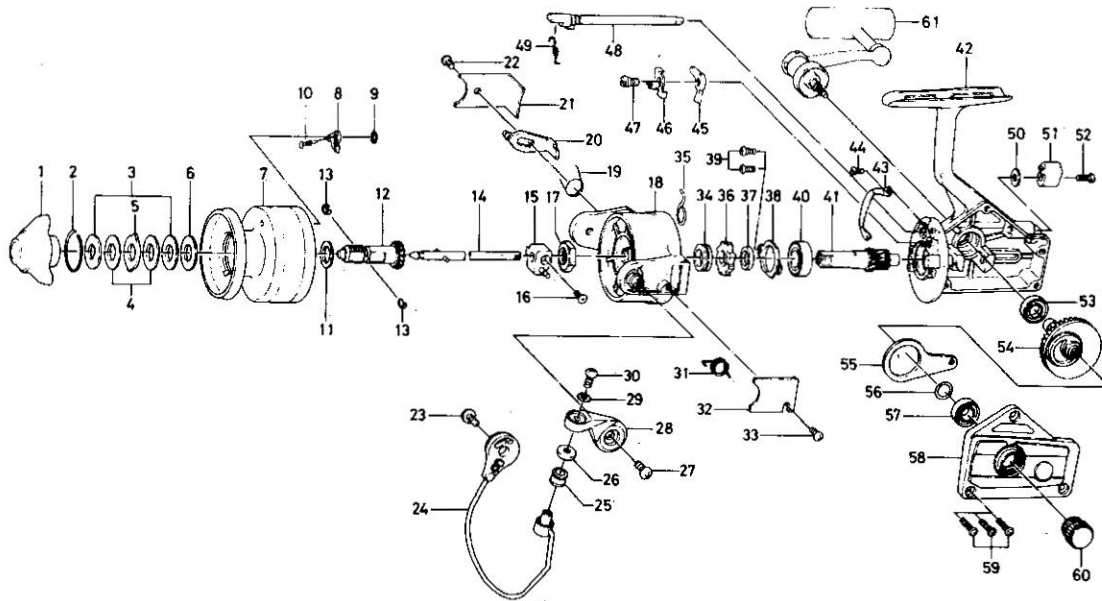


SPINNING REEL

**BLACK GOLD BG-15**



Key No.	Parts No.	Parts Name	Key No.	Parts No.	Parts Name
1	740-3801	Drag knob	32	B32-0201	Bail spring cover
2	170-4601	Drag washer retainer	33	351-7701	Bail spring cover screw
3	374-4802	Drag D washer	34	501-9901	Spring holder
4	373-3701	Disc washer	35	145-0901	Anti-reverse claw spring
5	373-3603	Drag A washer	36	280-9001	Ratchet
6	373-3704	Drag washer A	37	501-9801	Spacer
7	733-5405	Spool	38	321-0901	Ball bearing ret. washer
8	B07-5302	Spool click claw	39	351-0901	Ball bearing ret. washer screw
9	320-5901	Spool click claw retainer	40	635-4801	Ball bearing
10	144-1211	Spool click claw spring	41	403-2201	Pinion gear
11	375-5701	Spool washer	42	B31-8002	Body
12	720-1721	Spool metal	43	B32-1701	Cam kick plate
13	151-7211	Spool metal leaf spring	44	363-2911	Cam kick plate screw
14	B31-7601	Main shaft	45	111-8201	Anti-reverse claw
15	637-0102	Oscillating support	46	041-7101	Anti-reverse claw plate
16	351-6311	Oscillating slider screw	47	363-9301	Anti-reverse claw screw
17	B10-5701	Rotor nut	48	461-7104	Anti-reverse cam
18	B32-0301	Rotor	49	144-0321	Anti-reverse cam spring
19	B18-4701	Bail kick lever spring	50	371-6903	Anti-reverse lever washer
20	B32-1801	Bail kick lever	51	541-6801	Anti-reverse lever
21	B31-7801	Bail kick lever cover	52	353-4401	Anti-reverse lever screw
22	351-7701	Bail kick lever cover screw	53	637-5701	Ball bearing
23	353-8201	Bail holder screw	54	414-1312	Drive gear
24	B18-5003	Bail	55	481-2101	Oscillating slider
25	250-4221	Line roller	56	375-8500	Drive gear washer
26	501-1601	Roller collar	57	637-5701	Ball bearing
27	353-8201	Arm lever screw	58	B31-7502	Body cover
28	B18-4501	Arm lever	59	353-0001	Body cover screw
29	375-1001	Bail washer	60	B03-4802	Handle screw cap
30	353-8201	Bail screw	61	B56-0801	Handle
31	Ba8-4401	Bail spring			