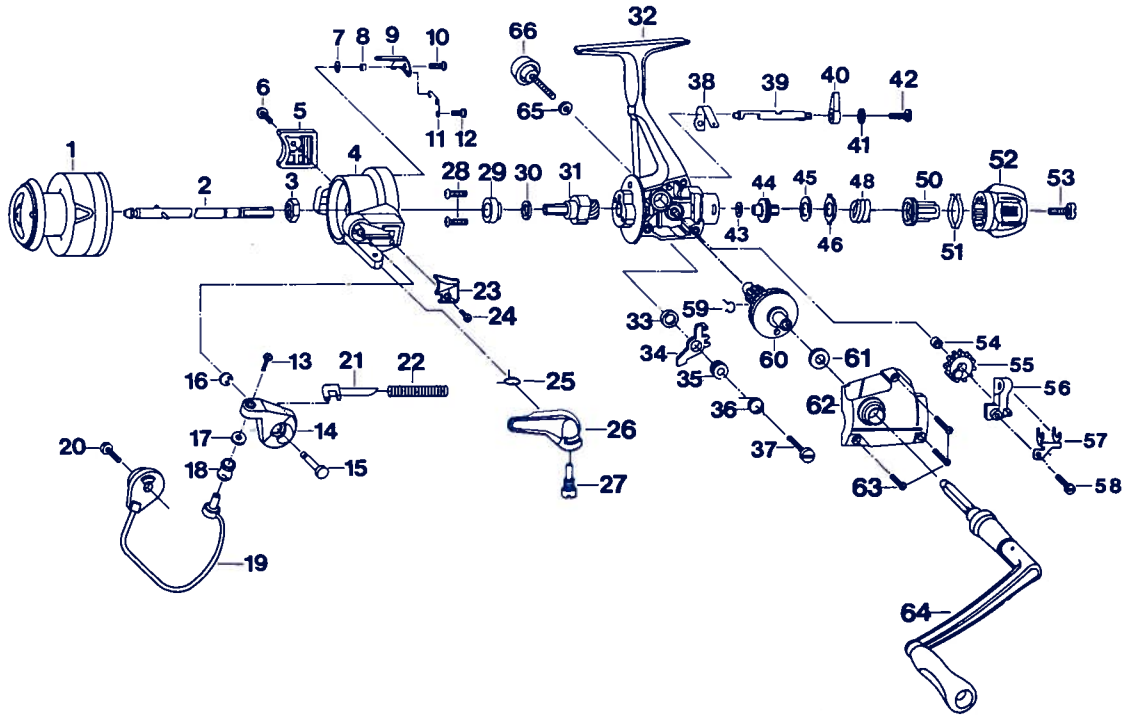


SPINNING REEL — AG755X



Key

No.	Part No.	Part Name
1	E90-0103	Spool assembly
2	E90-1201	Main shaft assembly
3	E90-1501	Rotor nut
4	E90-2002	Rotor
5	E90-2802	Bail trip cover
6	E90-3802	Bail trip cover screw
7	E90-2501	Bail trip washer
8	E90-2401	Bail trip lever collar
9	E90-2101	Bail trip lever
10	E90-2601	Bail trip lever screw
11	E90-2201	Lever spring
12	E90-2301	Lever spring screw
13	E90-3202	Line roller screw
14	E90-3101	Bail arm
15	E90-3501	Bail arm screw
16	E90-3701	Bail arm screw retainer
17	E90-3001	Line roller washer
18	E90-2901	Line roller
19	E90-1602	Bail
20	E90-2702	Bail trip cam screw
21	E90-3401	Bail spring shaft
22	E90-3301	Bail spring
23	E90-3602	Bail spring cover
24	E90-3802	Bail spring cover screw
25	E90-4101	Trigger spring
26	E90-3901	Trigger lever
27	E90-4002	Trigger screw
28	E90-4401	Bearing retainer screw
29	E90-4301	Bushing
30	E90-4501	Bearing washer
31	E90-4801	Pinion gear
32	E90-5303	Body assembly

Key

No.	Part No.	Part Name
33	E90-6001	Anti-reverse pawl washer
34	E90-5901	Anti-reverse pawl
35	E90-6101	Anti-reverse pawl collar
36	E90-6201	Anti-reverse pawl spring
37	E90-6301	Anti-reverse pawl screw
38	E90-6501	Anti-reverse cam spring
39	E90-6601	Anti-reverse cam
40	E90-6402	Anti-reverse lever
41	E90-6701	Anti-reverse lever washer
42	E90-6801	Anti-reverse lever screw
43	E90-7501	Drag washer A
44	E90-7401	Click gear
45	E90-7801	Drag washer B
46	E90-7901	Eared washer
48	E90-8101	Drag coil spring
50	E90-8401	Drag screw
51	E90-9001	Drag washer spring
52	E90-8502	Drag knob
53	E90-8901	Drag knob screw
54	E90-7301	Oscillating gear colar
55	E90-7201	Oscillating gear
56	E90-6901	Oscillating slider
57	E90-7001	Oscillating slider retainer
58	E90-7101	Oscillating block screw
59	E90-5201	Anti-reverse cam spring
60	E90-5101	Drive gear
61	E91-1300	Drive gear washer
62	E90-9103	Slide cover
63	E90-9801	Slide cover screw
64	E91-0002	Handle assembly
65	E91-0901	Handle lock washer
66	E91-1001	Handle lock screw