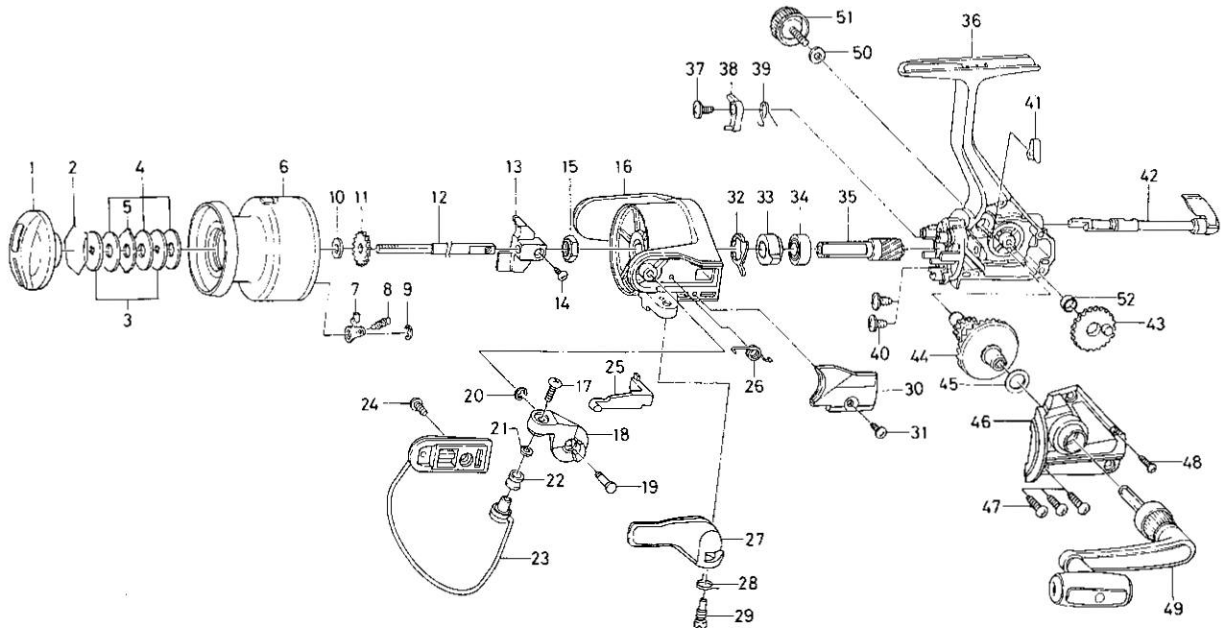


## SPINNING REEL — AG1605XB



Key No. 2-9

E49-2901 Spool assembly

**Key  
No.**

Key No.	Part No.	Part Name
1	E48-5802	Drag knob
2	171-7701	Drag washer retainer
3	F09-4901	Key washer
4	E13-6003	Drag washer
5	373-3603	Eared washer
6	E49-3001	Spool assembly
7	B07-5304	Click pawl
8	E40-3101	Click spring
9	320-5901	Click retainer
10	F09-4701	Spool washer
11	E46-2701	Click gear
12	E48-5301	Main shaft
13	F09-1301	Oscillating slider
14	352-1502	Oscillating slider screw
15	340-6602	Rotor nut
16	F11-0901	Rotor
17	B67-9304	Line roller screw
18	E49-4101	Bail arm
19	E49-3501	Bail arm screw
20	320-5901	Bail arm screw retainer
21	B55-4301	Line roller washer
22	L01-8201	Line roller
23	E49-2601	Bail assembly
24	L01-1702	Bail trip cam screw
25	E46-2101	Bail trip lever
26	F12-8901	Bail spring

**Key  
No.**

Key No.	Part No.	Part Name
27	F11-0601	Trigger lever
28	E36-9901	Trigger spring
29	E37-0002	Trigger screw
30	E49-2501	Bail spring cover
31	E36-4202	Bail spring cover screw
32	E46-2001	Anti-reverse pawl spring A
33	F11-1301	Anti-reverse ratchet
34	L03-6502	Ball bearing
35	E46-1101	Pinion gear
36	F11-0801	Body assembly
37	E00-7101	Anti-reverse pawl screw
38	E46-1301	Anti-reverse pawl
39	E46-1201	Anti-reverse pawl spring B
40	E03-7801	Bearing retainer screw
41	E32-7801	Anti-reverse cam spring
42	F08-5105	Anti-reverse lever
43	E46-1501	Oscillating gear
44	E46-1701	Drive gear
45	373-7808	Drive gear washer
46	F10-7105	Side cover
47	B83-5002	Side cover screw A
48	E15-8602	Side cover screw B
49	L01-1102	Handle assembly
50	B92-4902	Handle lock washer
51	B92-5001	Handle lock screw
52	F13-1601	Oscillating gear collar