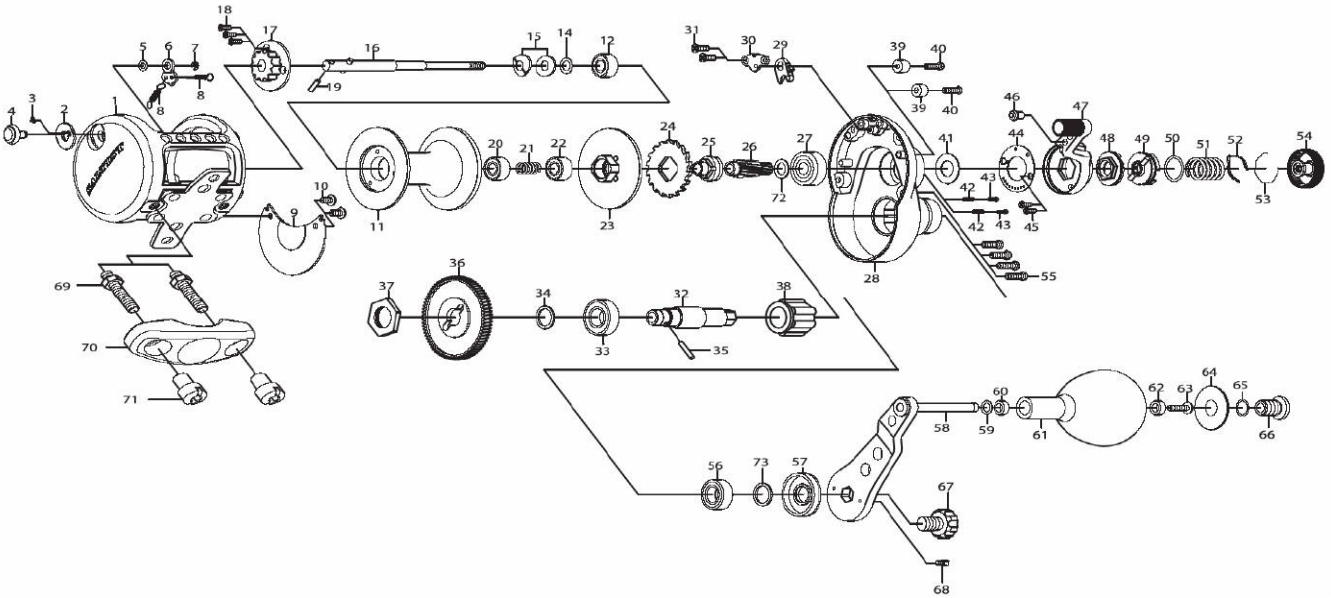


Please order by parts number, not key number
 Veuillez indiquer le numéro de la pièce (Non "Key" No.)



CONVENTIONAL REEL

SALTIST LD40H/LD50H



Key No.	Parts No.	Parts Name
1	H41-9701	Frame
2	H42-0301	Click plate
3	H42-0401	Click spring (A)
4	H48-5901	Click button
5	F09-4802	Click button washer
6	H42-0501	Click pawl
7	320-1402	Click pawl retainer
8	H54-7801	Click spring (B)
9	H42-0701	Frame plate
10	F50-5703	Screw (A)
11	H43-5501	Spool
12	H42-8701	Ball bearing (A)
14	375-8500	Washer (A)
15	H51-3101	Drag spring washer
16	H42-1201	Drive shaft (A)
17	H42-1601	Drag click cap
18	G29-7003	Screw (B)
19	G32-2701	Drive shaft pin (A)
20	G53-6001	Ball bearing (B)
21	H51-2501	Spring (A)
22	G62-6301	Ball bearing (C)
23	H48-2301	Drag plate
24	H42-3401	Drag ratchet
25	H48-2101	Metal
26	H42-2801	Pinion gear
27	E17-5802	Ball bearing (D)
28	H42-1703	Right side plate
29	E48-9001	Drag pawl
30	H42-3501	Drag pawl retainer
31	G31-8503	Screw (C)
32	H43-5701	Drive shaft (B)
33	G47-2501	Ball bearing (E)
34	372-7608	Washer (B)
35	G16-3801	Drive shaft pin (B)
36	H43-5801	Drive gear
37	H43-5901	Drive shaft nut

Key No.	Parts No.	Parts Name
38	F55-2703	Roller clutch
39	H42-3901	Collar (A)
40	351-7801	Screw (D)
41	H42-3801	Washer (C)
42	H53-0901	Spring (B)
43	H53-0801	Pin (A)
44	H48-1901	Drag lever plate
45	G31-8503	Screw (E)
46	H42-4501	Pin (B)
47	H43-6101	Drag lever
48	H42-4601	Pre-set cam (A)
49	H42-4701	Pre-set cam (B)
50	171-1001	"O" ring
51	H48-4801	Drag knob spring
52	F03-2401	Click leaf spring
53	170-7701	Ring
54	H42-4801	Pre-set drag knob
55	G47-3704	Screw (F)
56	G52-2801	Ball bearing (F)
57	H42-5101	Collar (B)
58-66	H43-6201	Handle assembly
67	H33-8401	Handle nut
68	G21-8201	Handle screw
69	H45-8301	Clamp bolt
70	G38-7901	Rod clamp
71	F18-7702	Clamp nut
72	375-8500	Washer (D)
73	371-2800	Washer (E)

SALTIST LD50H Special Parts

Key No.	Parts No.	Parts Name
1	H42-6801	Frame
11	H43-6601	Spool
16	H42-7201	Drive shaft (A)
28	H42-1704	Right side plate