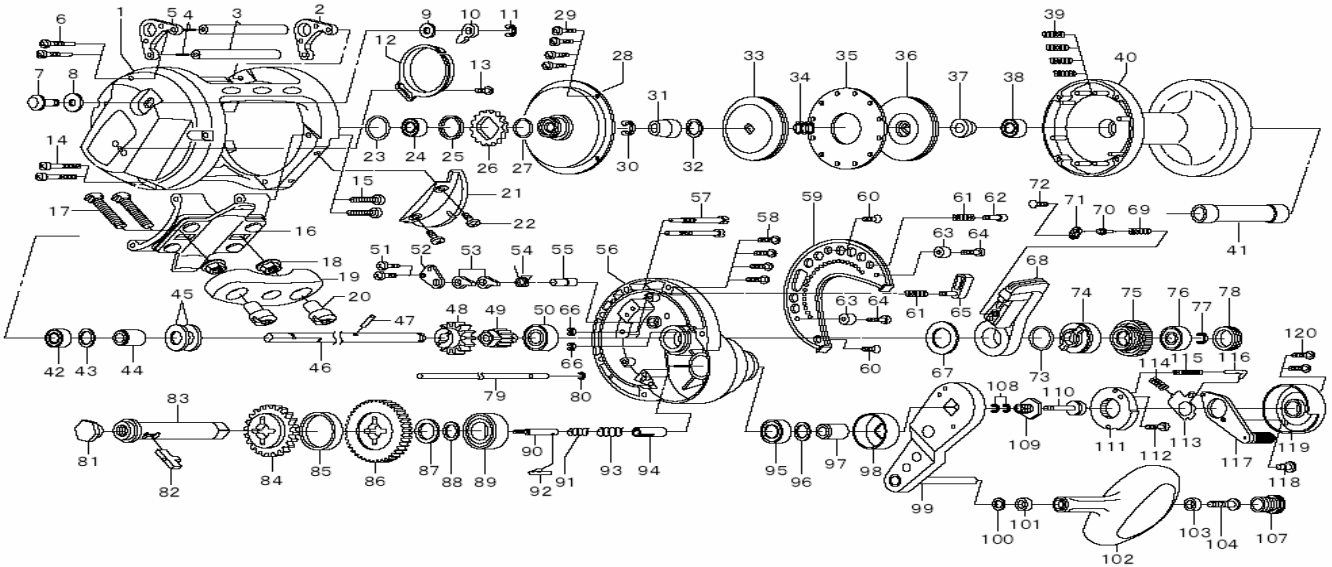


Please order by parts number, not key number
 Veuillez indiquer le numéro de la pièce (Non "Key" No.)



SALTIST LEVER DRAG 20T · 30T · 2SPEED



Key No.	Parts No.	Parts Name
1	Z01-9251	Frame
2	G35-0703	Harness lug (A)
3	G37-1902	Stabilizer bar (A)
4	G48-5101	Pin (A)
5	G35-0704	Harness lug (B)
6	G37-6902	Left side plate screw (A)
7	G35-9201	Click lever
8	375-9301	Washer (A)
9	375-9301	Click button washer
10	H40-8801	Click pawl
11	320-7601	Click pawl retainer
12	G35-0501	Click spring
13	351-7705	Click spring screw
14	353-9401	Left side plate screw (B)
15	G38-3201	Screw (A)
16	H32-1401	Frame stand
17	H36-0101	Clamp bolt
18	H18-7801	Clamp nut (A)
19	H36-0001	Rod clamp
20	F18-7702	Clamp nut (B)
21	G35-1002	Frame plate
22	351-6401	Screw (B)
23	G37-8001	"O" ring (A)
24	G53-5101	Ball bearing (A)
25	G37-2701	Ring
26	G34-9301	Click gear
27	171-1001	"O" ring (B)
28	G34-9201	Ratchet cover
29	G04-0803	Cover screw
30	F67-3501	Retainer (A)
31	H32-0601	Collar (A)
32	375-8500	Washer (B)
33-36	H32-0301	Drag washer
34	G34-8601	Ball bearing spring
35	G34-8701	Drag plate
37	H32-0201	Collar (B)
38-42	G53-5102	Ball bearing (B)
39	G34-5901	Spring (A)
40	H31-9801	Spool
41	H31-9901	Collar (C)
43	375-8500	Washer (C)
44	H32-0101	Collar (D)
45	132-0001	Drag spring washer
46	H32-0501	Main shaft
47	G32-2701	Pin (B)
48	G34-7801	Pinion gear (A)
49	H31-9701	Pinion gear (B)
50	635-5002	Ball bearing (C)
51	351-6601	Screw (C)
52	G34-5401	Plate (A)
53	F86-0402	Stopper
54	G34-5301	Spring (B)
55	G34-5101	Pin (C)
56	H31-6003	Right side plate
57	G37-7002	Right side plate screw (A)
58	E45-4002	Right side plate screw (B)
59	H31-6105	Pre-set plate
60	F21-1104	Pre-set plate screw (A)
61	G34-5901	Spring (C)
62	H38-0701	Push button
63	G34-5601	Collar (E)
64	351-7801	Screw (D)
65	G34-5701	Strike stop

Key No.	Parts No.	Parts Name
66	320-5901	Retainer (B)
67	G34-9601	Washer (D)
68	H32-0801	Drag lever
69	H32-1001	Spring (D)
70	H32-0901	Lever pin
71	H32-1101	Plate (B)
72	G27-0701	Screw (E)
73	G45-5301	"O" ring (C)
74	G34-9801	Pre-set cam
75	G34-9901	Pre-set drag knob
76	G53-5101	Ball bearing (D)
77	F67-3501	Retainer (C)
78	G35-0001	Pre-set drag knob screw
79	G37-1802	Stabilizer bar (B)
80	F55-0501	Retainer (D)
81	H31-6701	Screw (F)
82	H31-6301	Key
83	H31-6201	Drive shaft
84	H31-7101	Drive gear (A)
85	H31-7001	Drive gear collar (A)
86	H31-6901	Drive gear (B)
87	H31-6801	Drive gear collar (B)
88	G20-5503	Washer (E)
89	F64-1602	Ball bearing (E)
90	H31-6401	Screw (G)
91	H31-6501	Spring (D)
92	H31-6601	Shaft (A)
93	H31-7201	Spring (E)
94	H31-7301	Collar (F)
95	G37-0701	Ball bearing (F)
96	G20-5500	Washer (F)
97	H31-7401	Collar (G)
98	H31-7501	Drive shaft cap
99	H31-7701	Handle assembly
100	375-3000	Washer (G)
101-103	F64-8301	Bearing (A)
102	G33-9802	Handle Knob
104	E45-4003	Screw (H)
107	G16-4401	Handle screw
108	320-8202	Retainer (E)
109	H31-8601	Handle nut
110	H31-8701	Handle button
111	H31-8801	Set plate
112	G04-0814	Screw (I)
113	H31-8901	Plate (C)
114	H31-9001	Spring (F)
115	H31-9101	Spring (G)
116	G47-1804	Shaft (B)
117	H31-9201	Handle lever
118	H31-9501	Pin (D)
119	H31-9601	Handle cap (B)
120	G04-0815	Screw (J)

Special Parts for SALTIST LD30T-2SPEED

Key No.	Parts No.	Parts Name
1	Z01-9256	Frame
3	G35-0902	Stabilizer bar (A)
16	H32-2001	Frame stand
40	H32-1501	Spool
41	H32-1601	Collar (C)
46	H32-1701	Main shaft
59	H31-6106	Pre-set plate
79	G35-0802	Stabilizer bar (B)