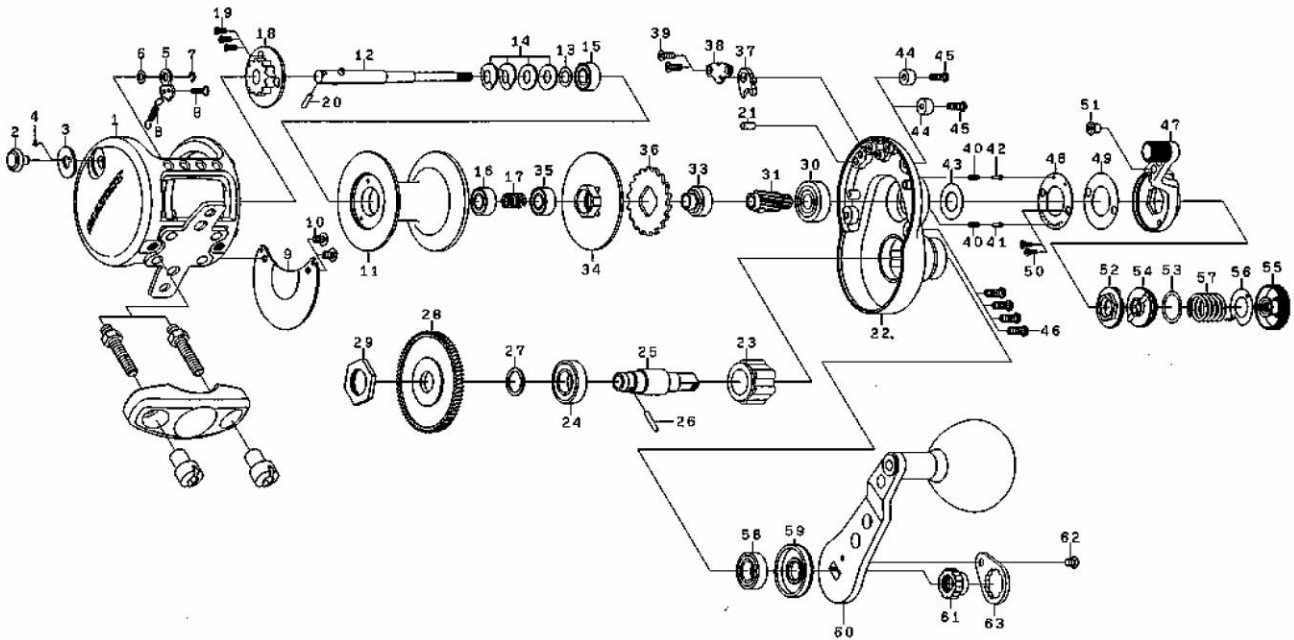




Please order by parts number, not key number
 Veuillez indiquer le numéro de la pièce (Non "Key" No.)

CONVENTIONAL REEL **STTLD20HSH/STTLD30HSH**



Key No.	Parts No.	Parts Name	Key No.	Parts No.	Parts Name	Key No.	Parts No.	Parts Name
1	E64-8401	Frame	25	E64-9101	Drive shaft (B)	50	E64-1501	Screw (F)
2	E63-9501	Click button	26	E64-9201	Drive shaft pin (B)	51	E64-5201	Pin (D)
3	E63-9601	Click plate	27	E64-9301	Washer (B)	52	E64-5301	Pre-set cam (A)
4	E65-6501	Click spring (A)	28	E65-9401	Drive gear	53	171-1001	"O" ring
5	E63-9701	Click pawl	29	E64-9501	Drive nut	54	E64-5501	Pre-set cam (B)
6	E61-7302	Click button washer	30	E17-5802	Ball bearing (D)	55	E64-5602	Pre-set drag knob
7	320-1402	Click pawl retainer	31	E65-9501	Pinion gear	56	E64-5701	Click leaf spring
8	E64-0201	Click spring (B)	33	E65-6701	Metal	57	E64-5801	Drag knob spring
9	E64-0301	Frame plate	34	E64-3001	Drag metal	58	G52-2801	Ball bearing (F)
10	351-7701	Screw (A)	35	G49-8506	Ball bearing (E)	59	E64-5901	Collar (B)
11	E65-9801	Spool	36	E64-3401	Drag ratchet	60	E65-9601	Handle assembly
12	E64-8801	Drive shaft (A)	37	E64-3501	Drag pawl	61	G22-0301	Handle nut
13	E57-8301	Washer (A)	38	E64-3701	Drag pawl retainer	62	354-0801	Handle screw
14	E64-1201	Drag spring washer	39	E64-3801	Screw (C)	63	B88-4701	Handle plate
15	G53-6001	Ball bearing (A)	40	E64-3901	Spring (B)			
16	G49-8506	Ball bearing (B)	41	E64-4001	Pin (B)			
17	E64-1301	Spring (A)	42	E65-9901	Pin (C)			
18	E64-1401	Drag click cap	43	E64-4101	Washer (D)			
19	E64-1501	Screw (B)	44	E64-4301	Collar (A)			
20	E64-1601	Drive shaft pin (A)	45	E59-1601	Screw (D)			
21	G21-1701	Pin (A)	46	E64-4501	Screw (E)			
22	E64-1708	Right side plate	47	E65-8202	Drag lever			
23	E63-3301	Roller clutch	48	E64-5001	Drag lever plate			
24	G47-2501	Ball bearing (C)	49	E66-0901	Washer(E)			

SALTIST LD30HSH Special parts		
Key No.	Parts No.	Parts Name
1	E64-1101	Frame
11	E65-9701	Spool
12	E64-0801	Drive shaft (A)
22	E64-1707	Right side plate