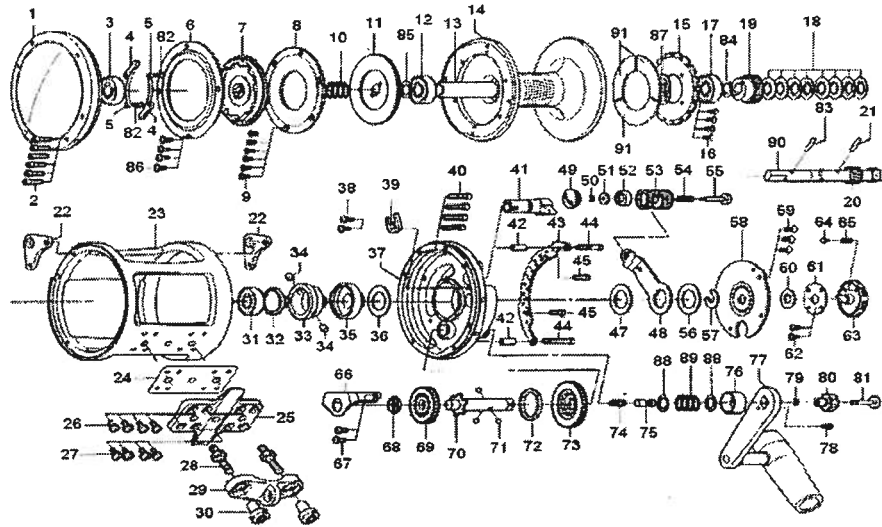


CONVENTIONAL REEL SEALINE TOURNAMENT 80W



Key No.	Parts No.	Parts Name	Key No.	Parts No.	Parts Name
1	K32-6901	L/S PLT	47	K30-0801	DRAG LEVER WASHER A
2	K30-5701	L/S PLT SCREW	48	K32-1501	DRAG LEVER
3	K31-0101	BALL BEARING A	49	K30-1901	DRAG LEVER CAP
4	K30-9001	A/R PAWL	50	320-5901	DRAG LEVER RET A
5	K30-8301	A/R PAWL SPRING	51	K32-1801	DRAG LEVER WASHER
6	K32-6801	RATCHET COVER	52	K30-1702	DRAG LEVER COLLAR
7	K32-6601	DRAG WASHER B	53	K32-1601	DRAG LEVER METAL
8	K32-6401	DRAG PLT	54	K30-8501	DRAG LEVER SPRING
9	K31-0401	DRAG PLT SCREW	55	K32-1701	DRAG LEVER BUTTON
10	K32-6501	BALL BEARING SPRING	56	K30-0801	DRAG LEVER WASHER B
11	K32-6001	DRAG WASHER A	57	K30-2201	DRAG LEVER RET B
12	K31-0101	BALL BEARING B	58	K32-1901	PRE-SET PLT
13	K32-5801	SPOOL COLLAR	59	K30-9701	PRE-SET PLT SCREW
14	K32-5901	SPOOL	60	K30-2301	COVER PLT WASHER
15	K32-5601	SPOOL PLT A	61	K30-2701	COVER PLT
16	K31-6301	SPOOL PLT SCREW	62	K31-0201	COVER PLT SCREW
17	K31-0101	BALL BEARING C	63	K32-2101	PRE-SET DRAG KNOB
18	B88-9601	SPRING WASHER	64	K30-2501	PRE-SET DRAG PIN
19	K32-5301	PINION GEAR B	65	K30-2601	PRE-SET DRAG SPRING
20	K32-5201	PINION GEAR A	66	K32-4001	SET PLT
21	K30-6401	PIN A	67	K30-9601	SET PLT SCREW
22	K32-4701	HARNESS LUG	68	K30-4901	DRIVE GEAR COLLAR B
23	K32-4201	FRAME	69	K32-3901	DRIVE GEAR B
24	K32-4401	FRAME PLT	70	K32-2301	DRIVE SHAFT
25	K32-4501	FRAME STAND	71	K30-3301	DRIVE SHAFT BALL
26	K31-1201	FRAME STAND SCREW A	72	K32-3801	DRIVE GEAR COLLAR A
27	K30-9801	FRAME STAND SCREW B	73	K32-2201	DRIVE GEAR A
28	K32-7301	CLAMP BOLT	74	K32-2401	DRIVE SHAFT SPRING
29	K30-9201	ROD CLAMP	75	K32-2501	DRIVE SHAFT PIN
30	K32-7401	CLAMP NUT	76	K32-2801	DRIVE SHAFT CAP
31	K31-0101	BALL BEARING D	77	K32-2901	HANDLE
32	K30-1101	ECCENTRIC CAM SCREW	78	K32-3701	HANDLE SCREW
33	K32-7201	SLEEVE	79	320-1402	HANDLE RET
34	K32-1301	ECCENTRIC CAM PIN	80	K32-3501	HANDLE NUT
35	K32-1201	ECCENTRIC CAM	81	K32-3601	HANDLE BUTTON
36	K30-0801	ECCENTRIC CAM WASHER	82	K30-8401	A/R PAWL SCREW
37	K32-0501	R/S PLT	83	K30-6401	PIN B
38	K30-9601	CLICK LEVER RET SCREW	84	372-7602	PINION GEAR WASHER
39	K30-8801	CLICK LEVER RET	85	B27-0701	BALL BEARING WASHER
40	K30-5701	R/S PLT SCREW	86	K30-9601	RATCHET COVER SCREW
41	K32-0901	CLICK LEVER	87	K32-5401	SPRING WASHER
42	K32-4901	QUADRANT RING COLLAR	88	K32-2601	DRIVE SHAFT WASHER
43	K32-5101	QUADRANT RING	89	K32-2701	DRIVE SHAFT CAP SPRING
44	K32-5001	QUADRANT RING SCREW A	90	K32-7701	MAIN SHAFT
45	K32-4801	QUADRANT RING SCREW B	91	K32-5701	SPOOL PLT