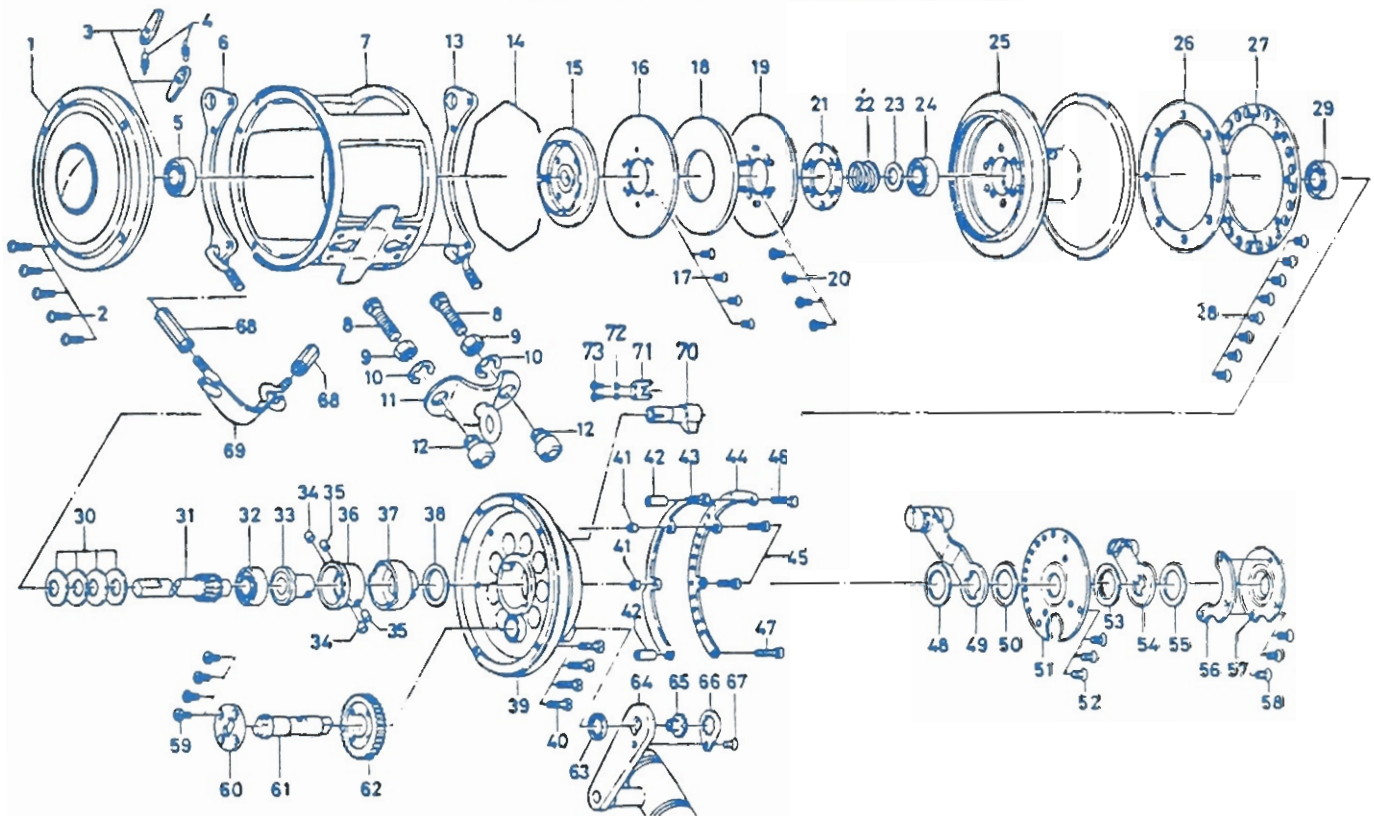


CONVENTIONAL LEVER-DRAG OCEAN REEL **SEALINE** **TOURNAMENT SLT 80/SLT 80W**



Key No.

Key No.	Parts No.	Parts Name
1	B70-3901	Left side plate
2	B83-1501	Left side plate screw
3	B70-4401	Anti-reverse pawl
4	144-8701	Anti-reverse pawl spring
5	B69-8901	Ball bearing
6	B70-1602	Harness lug A
7	B83-2201	Frame
8	B70-4501	Clamp bolt
9	B70-4601	Clamp nut
10	B83-3201	Clamp retainer
11	B70-4701	Rod brace A
12	B70-5001	Rod brace nut A
13	B70-1601	Harness lug B
14	B70-3801	Spool retainer
15	B70-3701	Ratchet plate
16	B70-3501	Metal drag washer A
17	B70-3401	Metal drag washer screw A
18	B83-3001	Drag washer
19	B83-2801	Metal drag washer B
20	B00-4301	Metal drag washer screw B
21	B83-2701	Spool plate
22	B83-2901	Ball bearing spring
23	376-3602	Ball bearing washer
24	B69-8901	Ball bearing
25	B70-2901	Spool
26	B70-3301	Click plate A
27	B70-3201	Click plate B
28	B70-3401	Click plate screw
29	B69-8901	Ball bearing
30	B83-2601	Disc spring washer
31	B70-2601	Pinion gear
32	B69-8901	Ball bearing
33	B69-8801	Eccentric cam A
34	B83-1301	Eccentric cam pin A
35	B69-8701	Eccentric cam pin B
36	B69-8601	Sleeve
37	B69-8501	Eccentric cam B
38	B69-5502	Eccentric cam washer
39	B69-7701	Right side plate
40	B83-1501	Right side plate screw

Key No.

Key No.	Parts No.	Parts Name
41	B69-9601	Quadrant ring collar (short)
42	B70-2501	Quadrant ring collar (long)
43	B83-1401	Quadrant ring A
44	B69-9502	Quadrant ring B
45	B99-8201	Quadrant ring screw A
46	B83-2401	Quadrant ring screw B
47	B83-2501	Quadrant ring screw C
48	B69-5502	Drag lever washer A
49	B92-0601	Drag lever A
50	B69-5502	Drag lever washer B
51	B69-9101	Pre-set plate
52	353-1201	Bridge cover screw
53	B69-5502	Drag lever washer C
54	B92-1301	Drag lever B
55	B69-5502	Drag lever washer D
56	B69-9301	Lever support plate
57	B69-9401	Cover plate
58	353-1201	Cover plate screw
59	B00-4301	Drive gear plate screw
60	B70-0801	Drive gear plate
61	B70-0701	Drive shaft
62	B70-0601	Drive gear
63	B70-0901	Drive shaft washer
64	B70-1001	Handle
65	B87-9901	Handle screw
66	B70-1501	Handle plate
67	353-1201	Handle plate screw
68	342-5201	Rod brace nut B
69	783-3202	Rod brace B
70	E05-9001	Click lever
71	E05-8801	Click lever retainer
72	160-8401	Click lever retainer washer
73	351-6407	Click lever retainer screw

SLT 80W Special Parts

1	B69-7501	Left side plate
7	B89-7001	Frame
25	B89-7301	Spool
31	B89-7601	Pinion gear