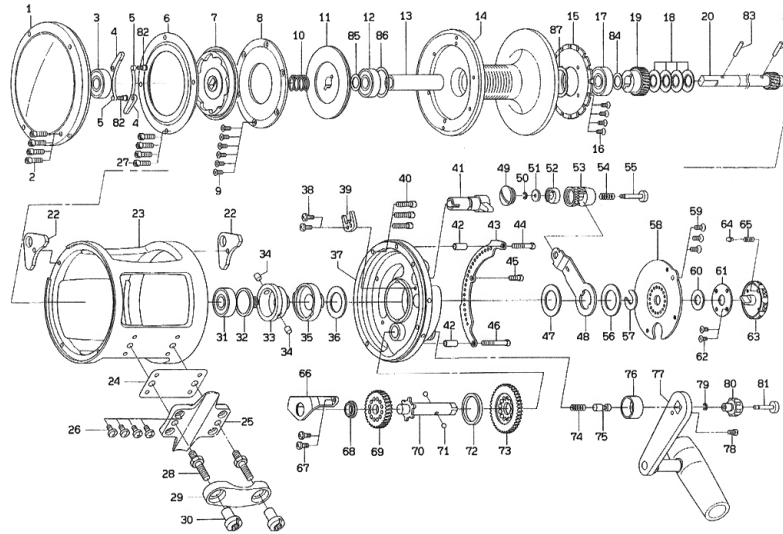


Please order by parts number, not key number
Bitte, Best: -Nr. angeben (Nicht "Key"-Nr.)
Veuillez indiquer le numero de la piece (Non "Key" No.)

SEALINE TOURNAMENT 20/30



SLT20
Key No.

Key No.	Parts No.	Parts Name
1	6K317401	Left side plate
2	6K305701	Left side plate screw
3	6K313401	Ball bearing (A)
4	6K309001	Anti-reverse pawl
5	6K317701	Anti-reverse pawl spring
6	6K317301	Ratchet cover
7	6K317101	Drag washer (A)
8	6K316901	Drag plate
9	6K316301	Plate screw
10	6K317001	Ball bearing spring
11	6K316501	Drag washer (B)
12	6K313401	Ball bearing (B)
13	6K318501	Spool collar
14	6K318401	Spool
15	6K316201	Spool plate
16	6K316301	Spool plate screw
17	6K313401	Ball bearing (C)
18	6K316001	Spring washer
19	6K317901	Pinion gear (B)
20	6K318301	Pinion gear (A)
21	6K315901	Pin (A)
22	6K318801	Harness lug
23	6K318201	Frame
24	6K315401	Frame plate
25	6K315501	Frame stand
26	6K309801	Stand screw (A)
27	6K317801	Stand screw (B)
28	6K318001	Clamp bolt
29	6G387901	Rod clamp
30	6F187701	Clamp nut
31	6K313401	Ball bearing (D)
32	6K313301	Eccentric cam screw
33	6K313201	Sleeve
34	6K309901	Eccentric cam pin
35	6K313101	Eccentric cam
36.47	6K300801	Washer (A)
37	6K312401	Right side plate
38	6K309601	Click lever retainer screw
39	6K308801	Click lever retainer
40	6K305701	Right side plate screw
41	6K312801	Click lever
42	6K315601	Quadrant ring collar
43	6K315701	Quadrant ring
44	6K306001	Quadrant ring screw (A)
45	6K303801	Quadrant ring screw (B)
46	6K306101	Quadrant ring screw (C)
48	6K313601	Drag lever

Parts Name

49	6K301901	Drag lever cap
50	63205801	Drag lever retainer (A)
51	6K311801	Drag lever washer
52	6K301701	Drag lever collar
53	6K313701	Drag lever metal
54	6K313801	Drag lever spring
55	6K313901	Drag lever button
57	6K302201	Drag lever retainer (B)
58	6K314001	Pre-set plate
59	6K318101	Pre-set plate screw
60	6K314201	Cover plate washer
61	6K314401	Cover plate
62	6K310201	Cover plate screw
63	6K314301	Pre-set drag knob
64	6K302501	Pre-set drag pin
65	6K302601	Pre-set drag spring
66	6K305001	Set plate
67	6K309601	Set plate screw
68	6K304901	Drive gear collar (B)
69	6K315001	Drive gear (B)
70	6K314601	Drive shaft
71	6K303301	Drive shaft ball
72	6K304701	Drive gear collar (A)
73	6K314501	Drive gear (A)
74	6K303101	Drive shaft spring
75	6K303201	Drive shaft pin
76	6K303701	Drive shaft cap
77	6K314701	Handle assembly
78	6K303801	Handle screw
79	6G270601	Handle retainer
80	6K303501	Handle nut
81	6K303601	Handle button
82	6K308401	Anti-reverse screw
83	6K306401	Pin (B)
84.85	6F246101	Washer (B)
86	6K319301	Washer (C)
87	6K319201	Washer (D)

Special Parts for SLT30

Key No.	Parts No.	Parts Name
13	6K316401	Spool collar
14	6K316101	Spool
20	6K315801	Pinion gear (A)
23	6K315201	Frame

Parts Name

6K301901	Chapeau de levier de frein
63205801	Clips de levier de frein
6K311801	Rondelle de levier de frein
6K301701	Collier de levier de frein
6K313701	Douille de levier de frein
6K313801	Ressort de levier de frein
6K313901	Bouton de levier de frein
6K302201	Clips de levier de frein (B)
6K314001	Disque de pré-réglage
6K318101	Vis de disque de pré-réglage
6K314201	Rondelle de plaque de couvercle
6K314401	Plaque de couvercle
6K310201	Vis de plaque de couvercle
6K314301	Bouton de frein
6K302501	Cliquet bruiteur
6K302601	Ressort de cliquet bruiteur
6K305001	Platine
6K309601	Vis de platine
6K304901	Collier de roue de commande (B)
6K315001	Roue de commande (B)
6K314601	Axe de la roue de commande
6K303301	Billes d'axe de roue de commande
6K304701	Collier de roue de commande (A)
6K314501	Roue de commande (A)
6K303101	Ressort d'axe de roue de commande
6K303201	Clavette d'axe de roue de commande
6K303701	Chapeau d'axe de roue de commande
6K314701	Manivelle
6K303801	Vis de manivelle
6G270601	Clips de manivelle
6K303501	Ecrou de manivelle (A)
6K303601	Ecrou de manivelle (B)
6K308401	Vis de cliquet anti-retour
6K306401	Stift (B)
6F246101	Rondelle (B)
6K319301	Rondelle (C)
6K319201	Rondelle (D)

SLT20
Key No.

Key No.	Parts No.	Designation des pieces
1	6K317401	Flasque gauche
2	6K305701	Vis de flasque de gauche
3	6K313401	Roulement à billes (A)
4	6K309001	Cliquet anti-retour
5	6K317701	Ressort du cliquet anti-retour
6	6K317301	Couvercle de rochet
7	6K317101	Rondelle de frein (A)
8	6K316901	Plaque de réglage du frein
9	6K316301	Plaque de frein
10	6K317001	Ressort de roulement à billes
11	6K316501	Rondelle de frein (B)
12	6K313401	Roulement à billes (B)
13	6K318501	Collier de bobine
14	6K318401	Bobine
15	6K316201	Plaque de bobine
16	6K316301	Vis de plaque de bobine
17	6K313401	Roulement à billes (C)
18	6K316001	Rondelle ressort
19	6K317901	Pignon (B)
20	6K318301	Pignon (A)
21	6K315901	Stift (A)
22	6K318801	Patte de harnais
23	6K318201	Entretoise
24	6K315401	Plaque de entretroise
25	6K315501	Pied de fixation de entretroise
26	6K309801	Vis du pied de fixation (A)
27	6K317801	Vis du pied de fixation (B)
28	6K318001	Vis de bride
29	6G387901	Bride de fixation
30	6F187701	Ecrou de vis de bride
31	6K313401	Roulement à billes (D)
32	6K313301	Came d'excentrique
33	6K313201	Manchon
34	6K309901	Verrou d'excentrique
35	6K313101	Came d'excentrique
36.47	6K300801	Rondelle (A)
37	6K312401	Flasque droit
38	6K309601	Vis de clips du ressort du cliquet
39	6K308801	Clips du ressort du cliquet
40	6K305701	Vis de flasque droit
41	6K312801	Lever de commande de came
42	6K315601	Entretoise de secteur
43	6K315701	Secteur
44	6K306001	Vis de secteur (A)
45	6K303801	Vis de secteur (B)
46	6K306101	Vis de secteur (C)
48	6K313601	Lever de frein

Designation des pieces

49	6K301901	Drag lever cap
50	63205801	Drag lever retainer (A)
51	6K311801	Drag lever washer
52	6K301701	Drag lever collar
53	6K313701	Drag lever metal
54	6K313801	Drag lever spring
55	6K313901	Drag lever button
57	6K302201	Drag lever retainer (B)
58	6K314001	Pre-set plate
59	6K318101	Pre-set plate screw
60	6K314201	Cover plate washer
61	6K314401	Cover plate
62	6K310201	Cover plate screw
63	6K314301	Pre-set drag knob
64	6K302501	Pre-set drag pin
65	6K302601	Pre-set drag spring
66	6K305001	Set plate
67	6K309601	Set plate screw
68	6K304901	Drive gear collar (B)
69	6K315001	Drive gear (B)
70	6K314601	Drive shaft
71	6K303301	Drive shaft ball
72	6K304701	Drive gear collar (A)
73	6K314501	Drive gear (A)
74	6K303101	Drive shaft spring
75	6K303201	Drive shaft pin
76	6K303701	Drive shaft cap
77	6K314701	Handle assembly
78	6K303801	Handle screw
79	6G270601	Handle retainer
80	6K303501	Handle nut
81	6K303601	Handle button
82	6K308401	Anti-reverse screw
83	6K306401	Pin (B)
84.85	6F246101	Washer (B)
86	6K319301	Washer (C)
87	6K319201	Washer (D)

Special Parts for SLT30

Key No.	Parts No.	Parts Name
13	6K316401	Spool collar
14	6K316101	Spool
20	6K315801	Pinion gear (A)
23	6K315201	Frame

Designation des pieces

6K316401	Collier de bobine
6K316101	Bobine
6K315801	Pignon (A)
6K315201	Entretoise